



The New Zealand Youth Championships

Saturday 20th – Wednesday 24th September 2025

The Manly Sailing Club, 65 Laurence Street, Manly, Whangaparaoa 0930

The event is a selection trial for the 2025 New Zealand Youth Sailing Team

The Organising Authority is Yachting New Zealand, 11 Omana Road, Milford, Auckland

SAILING INSTRUCTIONS (SIs)

The notation '[NP]' in a rule of the sailing instructions (SIs) means that a boat may not protest another boat for breaking that rule. This changes RRS 60.1.

1 RULES

- 1.1 The event is governed by the rules as defined in The Racing Rules of Sailing.
- 1.2 The Yachting New Zealand Safety Regulation Part 1 will apply.
- 1.3 For Wingfoil, Appendix WF, Wingfoiling Racing Rules will apply.
- 1.4 Appendix T, Arbitration, will apply.
- 1.5 For IQFOIL Add new pre-start zone definition as follows: Pre-start zone: The area formed by the starting line and the extensions of the lines from the first mark to the starting marks. During a starting sequence, the pre-start zone is part of the course area.
- 1.6 For IQFOIL Add new RRS rule 23.4 as follows: When, at the warning signal, the course to the first mark is approximately ninety degrees from the true wind, during the last 30 seconds before the starting signal: (a) all boards sailing inside the pre-start zone shall sail in the direction of the starting line; (b) a board approaching from outside the pre-starting zone is not entitled to room or markroom and shall keep clear of boards inside the pre-start zone; (c) a board that stops, slows down significantly, or one that is not making significant forward progress shall keep clear of all others, except when accidentally capsized. When RRS 23.4 (b) and 23.4(c) apply between two boards Section A RRS do not.

2 CHANGES TO SAILING INSTRUCTIONS

- 2.1 Any change to the sailing instructions will be posted before 0900 on the day it will take effect, except that any change to the schedule of races will be posted by 2000 on the day before it will take effect.

3 COMMUNICATIONS WITH COMPETITORS

- 3.1 Notices to competitors will be posted on the official notice board located at <https://www.yachtingnz.org.nz/2025-new-zealand-youth-championships-notice-board>

- 3.2 The race office is located upstairs at the Manly Sailing Club, telephone 0273811090 email Sam@yachtingnz.org.nz



4 CODE OF CONDUCT

4.1 [DP] Competitors and support persons shall comply with reasonable requests from race officials.

5 SIGNALS MADE ASHORE

5.1 Signals made ashore will be displayed on the flagpole of Manly Sailing Club.

5.2 When flag AP is displayed ashore, '1 minute' is replaced with 'not less than 45 minutes for courses A 'not less than 30 minutes for course B' in Race Signals AP.

5.3 [DP] A boat shall not leave the shore until Flag D (and the associated class flag) with one sound is displayed. The warning signal will not be made before the scheduled time or less than 45 minutes after flag D is displayed for course A and 30 minutes for course B.'

6 Boat Park

6.1 [DP] Access to the rigging area will be restricted to competitors only.

6.2 [DP] Boats must not leave the rigging area until D Flag has been displayed.

7 SCHEDULE OF RACES, RACE AREA ASSIGNMENTS AND TIME OF FIRST WARNING SIGNAL

7.1 The race schedule, including the time of the first warning signals and assignment of classes to Race Areas is shown in SI Addendum C.

7.2 One extra race per day may be sailed, provided that no class becomes more than one race ahead of schedule and the change is made according to SI 2.1.

7.3 For the 29er, ILCA and 420 classes, to alert boats that a race or sequence of races will begin soon, the orange starting line flag will be displayed with one sound at least five minutes before a warning signal is made.

For the iQFOIL, Wingfoil class, to alert boats that a race or sequence of races will be soon, the orange starting line flag will be displayed with one sound at least two minutes before a warning signal is made.

7.4 On Wednesday 24th September 2025 no warning signal will be made after 16:00.



8 CLASS FLAGS

8.1

Class	Class Flag
ILCA 6	ILCA6 Red insignia on a Green background
420	420 Blue insignia on a White background
29er	29er Red insignia on a White background.
iQFOIL 8M	White with a black IQ
Wingfoil	Red with white NZ Wingfoil Logo

9 RACING AREAS

9.1 SI Addendum A shows the approximate location of the racing areas.

10 COURSES

10.1 The diagrams in SI Addendum B show the courses, including the approximate angles between legs, the order in which marks are to be passed, and the side on which each mark is to be left.

10.2 Courses will not be shortened. This changes RRS 32.

11 MARKS

11.1 Mark descriptions are as follows:

Course marks - Area A (420, 29er and ILCA 6)

Mark	Description	New mark description as provided in SI 13
1	Red Cylinder	Blue cylinder
2	Red Cylinder	Pink cylinder
3s/3p	Red Cylinder	N/A
4s/4p	Yellow Cylinder	N/A
Start – Starboard End	Race Committee Signal Vessel	N/A
Start – Port End	Pink Cylinder	N/A
Finish – Starboard End	Race Committee Signal Vessel	N/A
Finish – Port End	Blue Cylinder	N/A



Support/coach boat area zone	Orange cone YNZ training marks	N/A
------------------------------	--------------------------------	-----

Course marks – Area B (iQFOIL, Wingfoil) – The marks will be Predictwind robotic marks.

Mark	Description	New mark description as provided in SI 13
1	Yellow with red stripes	Yellow Cylinder
4s/4p	Yellow	N/A
Start – Starboard End	Race Committee Signal Vessel	N/A
Start – Port End	Black Cylinder	N/A
Finish – Starboard End	Race Committee Signal Vessel	N/A
Finish – Port End	Yellow	N/A
Support/ coach boat area zone	Orange cone YNZ training marks	N/A

Course marks – Area B Slalom (iQFOIL, Wingfoil)

Mark	Description	New mark description as provided in SI 13
1	Yellow with red stripes	N/A
2	Yellow	N/A
3	Yellow	N/A
Start – Starboard End	Race Committee Signal Vessel	N/A
Start – Port End	Black Cylinder	N/A
Finish – Starboard End	Race Committee Signal Vessel	N/A
Finish – Port End	Orange tear drop	N/A
Support/ coach boat area zone	Orange cone YNZ training marks	N/A

Course marks- Area B Upwind Sprint (iQFOIL, Wingfoil)

Mark	Description	New mark description as provided in SI 13
1	Yellow with red stripes	N/A
2	Yellow	N/A
3	Yellow	N/A
Start – Starboard End	Race Committee Signal Vessel	N/A
Start – Port End	Black Cylinder	N/A
Finish – Starboard End	Race Committee Signal Vessel	N/A
Finish – Port End	Orange tear drop	N/A
Support/ coach boat area zone	Orange cone YNZ training marks	N/A



12 THE START

12.1 The starting line is between a staff displaying an orange flag on the race committee signal vessel at the starboard end and the course side of the port-end starting mark

12.2 [DP] Boats whose warning signal has not been made shall avoid the starting area during the starting sequence for other races.

12.3 For 29er, 420 and ILCA 6 boat that does not start within four(4) minutes after her starting signal will be scored Did Not Start without a hearing. This changes RRS A5.1 and A5.2. For IQFOIL , Wingfoil a board that does not start within four(4) minutes after her starting signal will be scored Did Not Start without a hearing. This changes RRS A5.1 and A5.2.

12.4 The iQFOIL and Wingfoil classes shall be started using the following signals:

Minutes before Starting Signal	Visual signal	Sound signal	Means
5	Orange flag displayed	One	
3	Class flag or heat number if applicable	One	Warning signal
2	U or Black flag displayed	One	Preparatory signal
1	U or Black flag removed	One long	One-minute signal
0	Class flag removed	One	Starting signal

This changes RRS Appendix B3 rules 26.1 and 26.2.

13 CHANGE OF THE NEXT LEG OF THE COURSE

13.1 To change the next leg of the course, the race committee will lay a new mark (or move the finishing line) and remove the original mark as soon as practicable. When in a subsequent change a new mark is replaced, it will be replaced by an original mark.

14 THE FINISH

14.1 For the trapezoid the finishing line is between a staff displaying a blue flag on the finishing mark at the starboard end and the course side of the port end finishing mark.

For the windward leeward courses, the finishing line is between a staff displaying a blue flag on the finishing mark at the starboard end and the port end finishing mark.



15 TIME LIMITS [AND TARGET TIMES]

15.1 The Race Time Limit (see RRS 35) and the Target Time are shown in the table below.

Class/ Format	Target Time	Race Time Limit
ILCA 6	40	60
420	40	60
29er	30	45
iQFOIL 8M - Course	16	23
iQFOIL 8M - Slalom	6	8
iQFOIL 8m – Upwind Sprint	7	12
Wingfoil - Course	12	23
Wingfoil – Slalom	6	8
Wingfoil – Upwind Sprint	7	12

15.2 The race committee may award a finishing score to a boat that is still racing by displaying to her from a committee vessel (which may be in motion) flag W with one sound signal. A boat so notified is no longer required to sail the course (changing rule 28), shall stop racing and shall return to the starting area, or return ashore if there is no more racing. A finishing score under this Sailing Instruction will be the score she would have received had she sailed the course and finished within any time limit, without gaining or losing any place. However, when two or more boats that are overlapped are notified, they will be scored as if they were tied.

16 HEARING REQUESTS

16.1 For each class, the protest time limit is 60 minutes after the last boat in that class finishes the last race of the day or the race committee signals no more racing today, whichever is later. The time will be posted on the official notice board.

16.2 Hearing request forms are available from the registration desk at each launching venue.

16.3 Notices will be posted no later than 30 minutes after the protest time limit to inform competitors of hearings in which they are parties or named as witnesses. Hearings will be held in the protest rooms, located inside the Manly Sailing Club at the time posted.

16.4 A list of boats that have been penalized for breaking RRS 42 under Appendix P will be posted.

17 [NP][DP] SAFETY REGULATIONS

17.1 Competitors shall wear a personal flotation device securely fastened at all times when afloat except briefly while changing or adjusting clothing or personal equipment. Wet suits and dry suits do not constitute adequate personal buoyancy. This changes RRS 40.

17.2 All competitors shall sign-on inside the Manly Sailing Club each time they leave the shore to enter the course and shall sign-off each time they come ashore.



17.3 A boat that retires from a race or returns to the launching area before she has finished the last race of the day shall notify the race committee as soon as possible.

17.4 If a boat does not sign-on a one point scoring penalty will be added to boat's race score for the first race of the day. If a boat does not sign-off by the end of protest time a one point scoring penalty will be added to the boat's race score for the last race of the day. However, she shall not be scored worse than DNF. This changes RRS63.1 and RRS A5.

18 [DP] REPLACEMENT OF CREW OR EQUIPMENT

18.1 Substitution of competitors in double handed classes is not allowed without prior written approval of the protest committee.

18.2 Substitution of damaged or lost equipment is not allowed unless authorized in writing by the technical committee. Requests for substitution shall be made to the committee at the first reasonable opportunity, which may be after the race.

19 [DP] EQUIPMENT AND MEASUREMENT CHECKS

19.1 A boat or equipment may be inspected at any time for compliance with the class rules, notice of race and sailing instructions.

19.2 When instructed by a race official on the water, a boat shall proceed to a designated area for inspection.

19.3 RRS 78.1 shall apply at all times while racing.

19.4 [DP] For the IQFOIL class, the changing of shims to adjust the rake of the foil is prohibited while afloat.

20 [DP] COACH BOATS, SUPPORT BOATS AND SPECTATORS [DP]

20.1 Support vessels shall register with the organising authority at registration with the names of the competitors they are supporting.

20.2 The Support Team Vessel Zone is defined in Attachment 2. The Support Team Vessel Zone applies when Support Team Vessel Zone marks are laid. However, the race committee may inform support team vessels on the VHF channel for the Race Area that the Support Team Vessel Zone does not apply for an upcoming race (even if the marks are still laid).

20.3 Support Team Vessel Zone will apply on all race areas. After launching, support team vessels shall proceed immediately to the Support Team Vessel Zone.

20.4 Support Team vessels shall only leave the Support Team Vessel Zone:

20.4.1 after the final race of the day when the last boat in the race has finished;

20.4.2 if permitted to do so by the Race Committee



20.4.3 if racing has been postponed (AP/H or

AP/A) or abandoned (N/H or N/A); or

20.4.4 to leave the Race Area permanently by moving away from the course.

20.4.5 to assist race management in providing safety support when requested to do so.

- 20.5** Sufficient personal flotation devices for each crew member must be carried or worn in all support vessels at all times in accordance with New Zealand Maritime Law.
- 20.6** [DP] All support person vessels shall always have an engine safety cut out switch (kill cord) attached to the driver while the engine is running.
- 20.7** All support and coach boats are asked to have VHF communications and be available to assist the race committee if required.
- 20.8** Unless notified by the race committee, towing of competitors by support team vessels is prohibited.

When Support Team Vessel Zone marks are not in place, Support Team Regulations 20.9 to 20.10 applies.

20.9 From the time of the warning signal for the first fleet to start until all boats have finished or retired or the Race Committee signals a postponement or abandonment, support team vessels shall stay outside areas where boats are racing. Such areas are defined as: - not closer than 100m to any boat racing (except a boat in distress or requiring assistance); - within 100m of the starting line and marks from the time of the preparatory signal until all boats have left the starting area or the Race Committee signals a postponement or abandonment; - between any boat racing and the next mark of the course; - between the inner and outer trapezoid courses when boats are racing on both courses; - within 100m of any mark of the course while boats are in the vicinity of that mark; and - within 100m of the finishing line and marks while boats are finishing.

20.10 Support team vessels shall proceed around the Race Area in such a way to minimise the effect their wash on boats racing and official vessels. Support team vessels that are motoring above five knots shall remain at least 150m from any boat racing.

21 [NP][DP] HAUL OUT RESTRICTIONS

22.1 All boats will be required to launch and retrieve from the beach adjacent to the Manly Sailing Club.

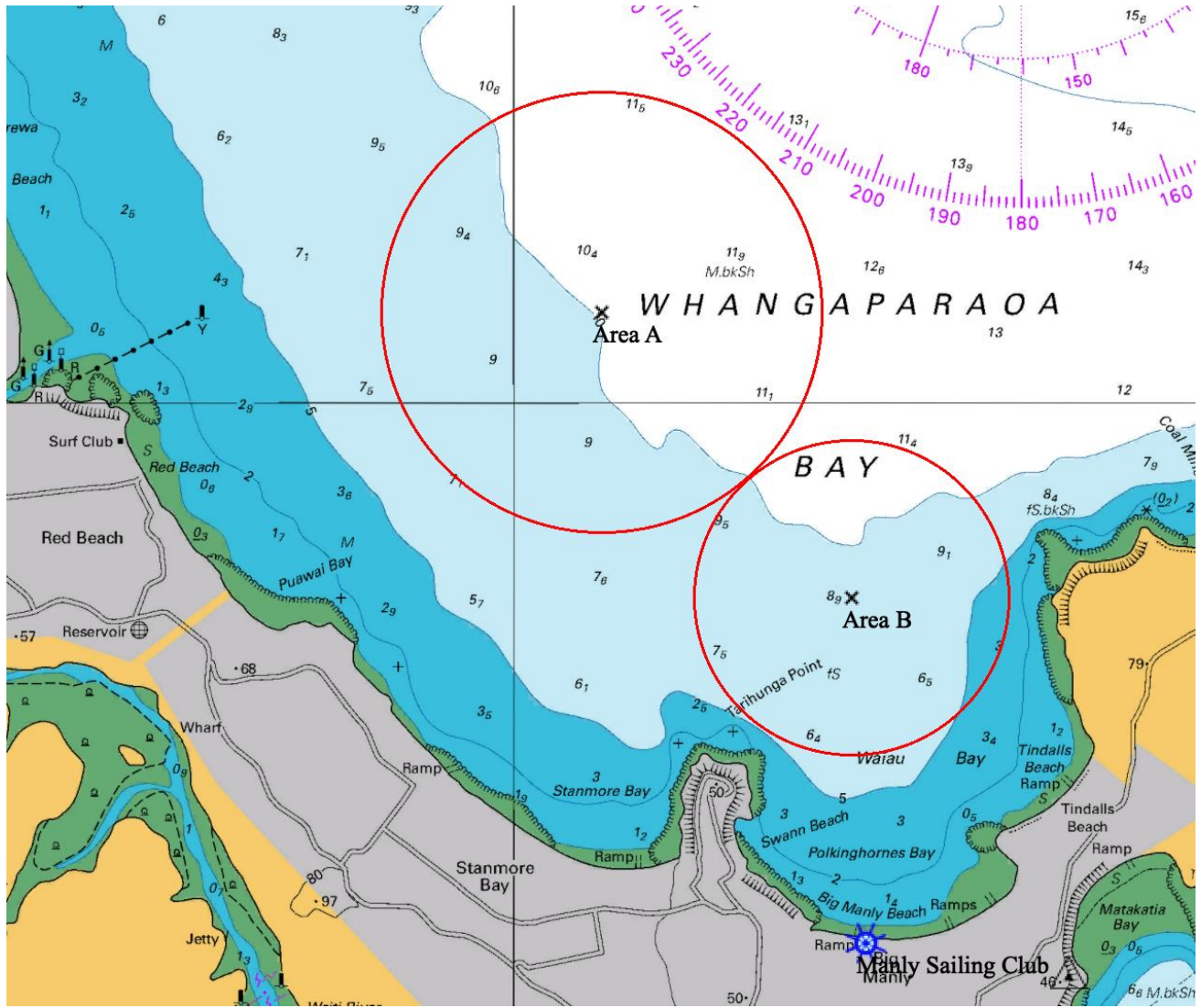


23 RISK STATEMENT

RRS 3 states: 'The responsibility for a boat's decision to participate in a race or to continue to race is hers alone.' By participating in this event each competitor agrees and acknowledges that sailing is a potentially dangerous activity with inherent risks. These risks include strong winds and rough seas, sudden changes in weather, failure of equipment, boat handling errors, poor seamanship by other boats, loss of balance on an unstable platform and fatigue resulting in increased risk of injury. Inherent in the sport of sailing is the risk of permanent, catastrophic injury or death by drowning, trauma, hypothermia or other causes.



Addendum A Racing Areas



Course A: ILCA 6, 420, 29er

Course B: iQFOIL 8m, Wingfoil



Addendum B Courses

420, ILCA 6:

I

Course: Inner Trapezoid

Signal	Mark Rounding Order
I2	Start – 1 – 4s/4p – 1 – 2 – 3p – Finish
I3	Start – 1 – 4s/4p – 1 – 4s/4p – 1 – 2 – 3p – Finish

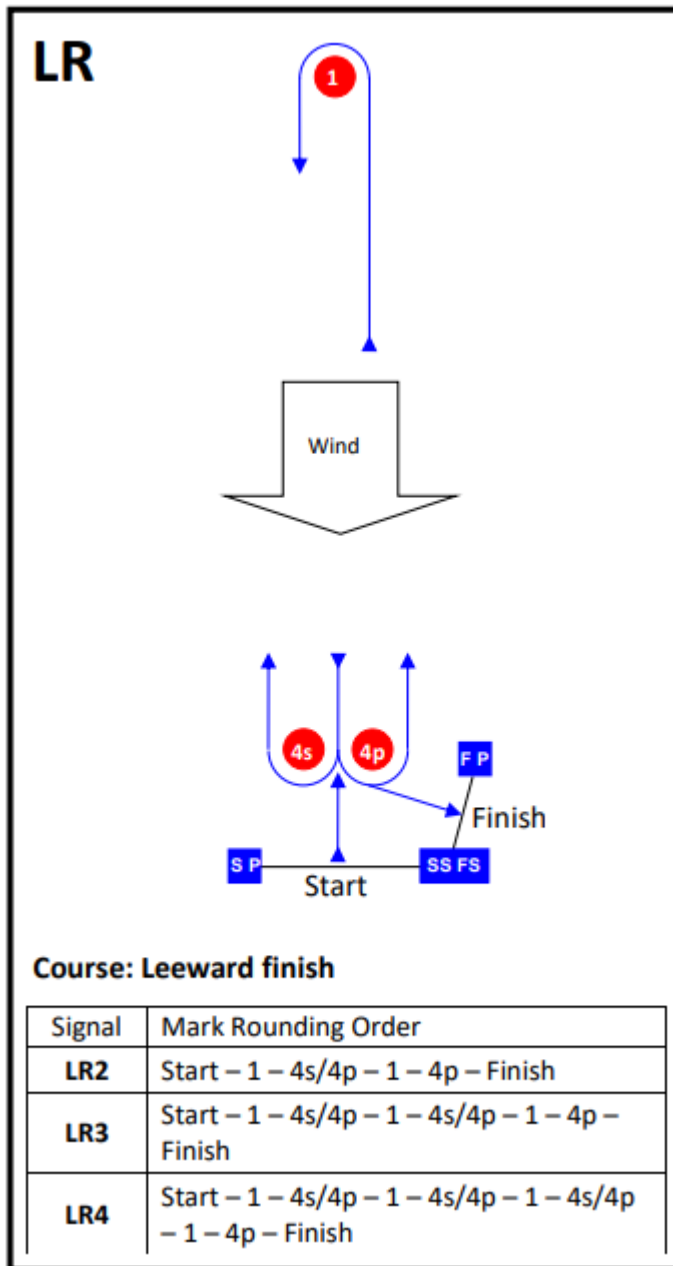
O

Course: Outer Trapezoid

Signal	Mark Rounding Order
O2	Start – 1 – 2 – 3s/3p – 2 – 3p – Finish
O3	Start – 1 – 2 – 3s/3p – 2 – 3s/3p – 2 – 3p – Finish

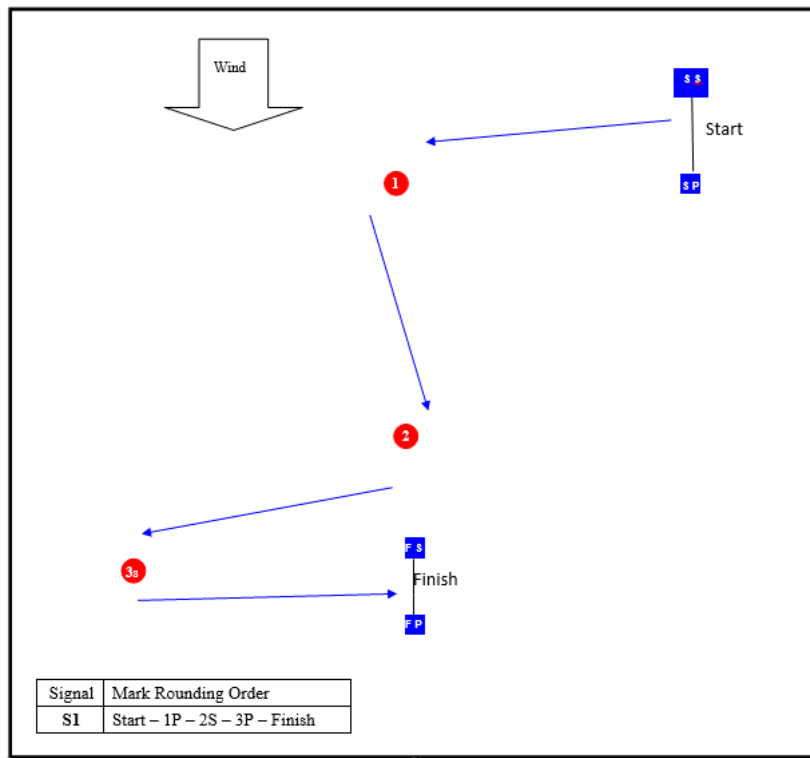


29er, iQFOIL, Wingfoil:

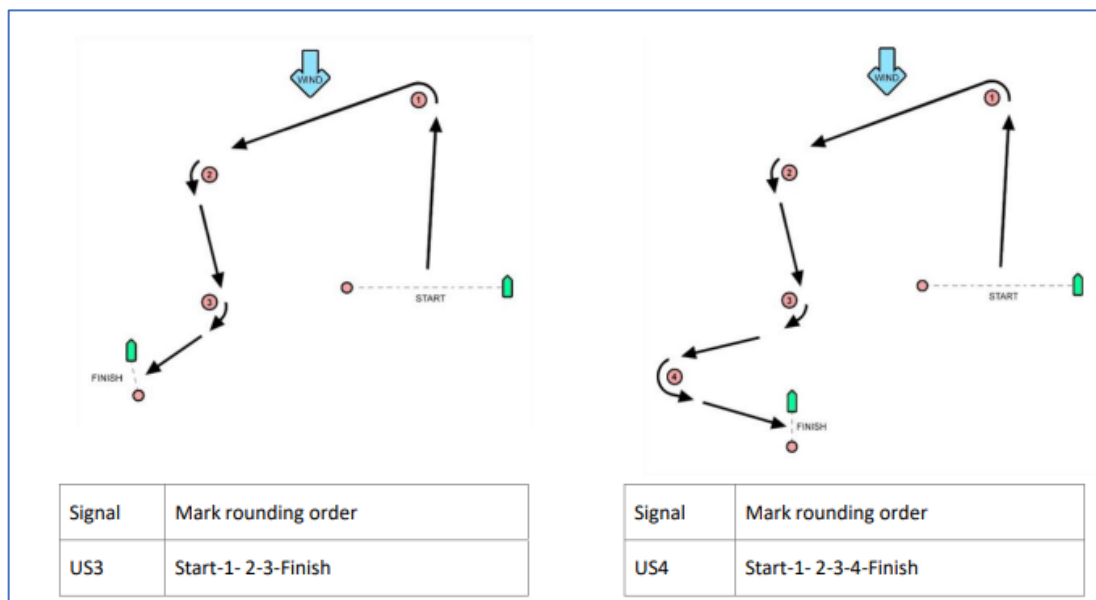




iQFOIL, Wingfoil Slalom:



iQFOIL, Wingfoil Upwind Sprint:





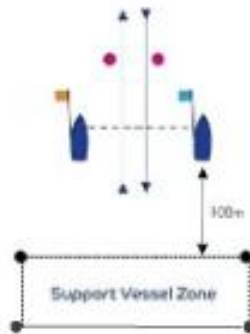
Addendum C – Schedule of race and time of warning signal

Class	Course Area	Total Races	Sunday 21 st September		Monday 22 nd September		Tuesday 23 rd September		Wednesday 24 th September	
			First Warning	Number of races	First Warning	Number of races	First Warning	Number of races	First Warning	Number of races
420	A	10	1255	2	1155	3	1155	3	1055	2
ILCA 6	A	10	1300	2	1200	3	1200	3	1100	2
29er	A	12	1310	3	1210	3	1210	3	1110	3
iQFOIL	B	18	1257	4	1157	5	1157	5	1057	4
Wingfoil	B	18	1300	4	1200	5	1200	5	1100	4



Addendum D – Support Team Vessel Zones:

1. Windward – Leeward Course



2. Trapezoid Course

