



The New Zealand Youth Championships

Saturday 20th – Wednesday 24th September 2025
The Manly Sailing Club, 65 Laurence Street, Manly, Whangaparaoa 0930
The event is a selection trial for the 2025 New Zealand Youth Sailing Team

The Organising Authority is Yachting New Zealand, 11 Omana Road, Milford, Auckland

The notation '[NP]' in a rule means that a boat may not protest another boat for breaking that rule. This changes RRS 60.1(a)

Notice of Race

1 RULES

- 1.1 The event is governed by the rules as defined in The Racing Rules of Sailing.
- 1.2 The Yachting New Zealand Safety Regulations Part 1 shall apply.
- 1.3 Appendix T, Arbitration will apply.
- 1.4 For Wingfoil, Appendix WF, Wingfoiling Racing Rules will apply.
- 1.5 Decisions of the protest committee will be final as provided in RRS 70.5(b).

2 SAILING INSTRUCTIONS

- 2.1 The sailing instructions will be available on the 15th of September 2025 at <https://www.yachtingnz.org.nz/>.

3 COMMUNICATION

- 3.1 The online official notice board is located at <https://www.yachtingnz.org.nz/>
- 3.2 From the first warning signal until the end of racing each day, except in an emergency, a boat shall not make voice or data transmissions and shall not receive voice or data communication that is not available to all boats.

4 ELIGIBILITY AND ENTRY

4.1

Event:	Event:
Male/Mixed 420	Male iQFOiL 8m
Female 420	Female iQFOiL 8m
Male ILCA 6	Male Formula Kite
Female ILCA 6	Female Formula Kite
Male/Mixed 29er	Male Wingfoil
Female 29er	Female Wingfoil



- 4.2 Competitors shall be under the age of 19 years on 31 December 2025.
- 4.3 Eligible boats may enter by completing the electronic entry form that is located at:
<https://www.yachtingnz.org.nz/nzl-sailing/youth-sailing/2024-new-zealand-youth-championships>
- 4.3 No entries will be accepted after 2100hrs on Friday 5th September 2025.
- 4.4 If at the closing date of entries, fewer than four (4) entries have been received in any class, the Organising Authority reserves the right to either cancel racing or make other arrangements for the class or classes concerned.
- 4.5 All entrants and crew members shall be financial members of a yacht club affiliated to Yachting New Zealand, or be a member of his/her Member National Authority or one of its affiliated organisations (such membership shall be established by the competitor
- 4.6 Each crew shall comply with World Sailing Regulation 19.
- 4.7 [NP[] Access to the competitors rigging area may be restricted to competitors only.

5 FEES

- 5.1 Each competitor will be charged an entry fee of NZL \$150 per sailor, payable to the organising authority as instructed on the entry form.
- 5.2 There will be no refund if entered competitors withdraw their entry after the entry deadline.

6 ADVERTISING

- 6.1 Boats may be required to display advertising chosen and supplied by the organizing authority.
- 6.2 The organizing authority may provide bibs that competitors are required to wear as permitted by the World Sailing Advertising Code.

7 FORMAT

- 7.1 The event will consist of a single series

8 SCHEDULE

- 8.1 Registration and measurement for all competitors and support vessels will be on:
20th September 2025 from 1200hrs to 1600hrs at Manly Sailing Club.
- 8.2 A competitors briefing will be held at 1100hrs on Sunday 21st September at the Manly Sailing Club.

8.3 The time of the first warning signal for the first class to start on Sunday 21st September will be 1255hrs. The time of the warning signal for the first class to start on subsequent days will be 1155hrs. The time of the first warning signal on Wednesday the 24th of September will be 1055hrs.

8.4 The number of races for each class are as follows:

Class:	Number of Races:	Races per day scheduled	Races per day Maximum	Target time
Male/Mixed 420	10	3	4	40
Female 420	10	3	4	40
Male ILCA 6	10	3	4	40
Female ILCA 6	10	3	4	40
Male/Mixed 29er	12	3	4	25
Female 29er	12	3	4	25
Male iQFOiL 8m	18	4 or 5	5 course. 6 slalom.	18(course) 6 (slalom
Female iQFOiL 8m	18	4 or 5	5 course. 6 slalom.	18(course) 6 (slalom
Male Formula Kite	18	4 or 5	5	12
Female Formula Kite	18	4 or 5	5	12
Male Wingfoil	18	4 or 5	5	12
Female Wingfoil	18	4 or 5	5	12

8.5 On Wednesday 24th September 2025, no warning signal will be made after 1600 hrs.

9 EQUIPMENT AND MEASUREMENT

9.1 Each boat shall produce or verify the existence of a valid measurement certificate.

9.2 [DP] All boats and boards shall be available for equipment inspection on Saturday 20th September 9.3 between 1200 hrs to 1600 hrs.

9.3 Boats may be inspected at any time.

10 VENUE

Addendum 1 shows the location of the event venue and the approximate location of the possible racing areas.

11 COURSES

The courses to be sailed will be trapezoid, windward/leeward courses and slalom.

12 PENALTY SYSTEM

12.1 Appendix P, Special Procedures for rule 42, will apply.

- 12.2 For the 29er, iQFOIL, Kitefoiling, RRS 44.1 and RRS P2.1 are changed so that the two-turns penalty is replaced by the one-turn penalty.

13 SCORING

- 13.1 Three (3) races are required to be completed to constitute a series.
- 13.2 Male/mixed and female events of the same class will race and be scored together.
- 13.3 For 420, ILCA and 29er:
- (a) When fewer than five (5) have been completed, a boat's series score will be the total of her race scores.
 - (b) When five (5) or more races have been completed, a boat's series score will be the total of her race scores excluding their worst score.
- 13.4 For iQFOiL, Formula Kite and Wingfoil:
- (a) When fewer than five (5) have been completed, a boat's series score will be the total of her race scores.
 - (b) When five (5) to nine (9) races have been completed, a boat's series score will be the total of her race scores excluding their worst score.
 - (c) When ten (10) or more races have been completed, a boat's series score will be the total of her race scores excluding her two (2) worst scores.

14 COACH BOATS, SUPPORT BOATS AND SPECTATORS [DP]

- 14.1 Support vessels shall register with the organising authority at registration with the names of the competitors they are supporting.
- 14.2 The Support Team Vessel Zone is defined in Attachment 2. The Support Team Vessel Zone applies when Support Team Vessel Zone marks are laid. However, the race committee may inform support team vessels on the VHF channel for the Race Area that the Support Team Vessel Zone does not apply for an upcoming race (even if the marks are still laid).
- 14.3 Support Team Vessel Zone will apply on all race areas. After launching, support team vessels shall proceed immediately to the Support Team Vessel Zone.
- 14.4 Support Team vessels shall only leave the Support Team Vessel Zone:
- 14.4.1 after the final race of the day when the last boat in the race has finished;
 - 14.4.2 if permitted to do so by the Race Committee
 - 14.4.3 if racing has been postponed or abandoned for that day ; or
 - 14.4.4 to leave the Race Area permanently by moving away from the course.
 - 14.4.5 to assist race management in providing safety support or if there is an immediate safety requirement.
- 14.5 Sufficient personal flotation devices for each crew member must be carried or worn in all support

vessels at all times in accordance with New Zealand Maritime Law.

- 14.6 [DP] All support person vessels shall always have an engine safety cut out switch (kill cord) attached to the driver while the engine is running.
- 14.7 All support and coach boats are asked to have VHF communications and be available to assist the race committee if required.
- 14.8 Unless notified by the race committee, towing of competitors by support team vessels is prohibited.

When Support Team Vessel Zone marks are not in place, Support Team Regulations 14.8 to 14.9 applies.

- 14.8 From the time of the warning signal for the first fleet to start until all boats have finished or retired or the Race Committee signals a postponement or abandonment, support team vessels shall stay outside areas where boats are racing. Such areas are defined as: - not closer than 100m to any boat racing (except a boat in distress or requiring assistance); - within 100m of the starting line and marks from the time of the preparatory signal until all boats have left the starting area or the Race Committee signals a postponement or abandonment; - between any boat racing and the next mark of the course; - between the inner and outer trapezoid courses when boats are racing on both courses; - within 100m of any mark of the course while boats are in the vicinity of that mark; and - within 100m of the finishing line and marks while boats are finishing.
- 14.9 Support team vessels shall proceed around the Race Area in such a way to minimise the effect their wash on boats racing and official vessels. Support team vessels that are motoring above five knots shall remain at least 150m from any boat racing.

15 RADIO COMMUNICATION

Except in an emergency, a boat that is racing shall not make voice or data transmission and shall not receive voice or data communication that is not available to all boats. This restriction also applies to mobile phones. [DP]

16 DRUG TESTING

Competitors are reminded of the World Sailing rules and regulations concerning the use of banned methods and substances, which are contained in World Sailing Anti-Doping Code. Drug testing may take place during this event.

17 DRONES

17.1 The use of drones (remotely piloted aircraft systems) by competitors, support persons, or any third parties is strictly prohibited throughout the event.

17.2 Only the Organising Authority may operate drones during the event or permit their use in writing for official event purposes such as media coverage.

18 PRIZES

Prizes shall be awarded to the winners of each event.

19 RIGHTS TO USE NAME AND LIKENESS

In signing the Entry Form and participating in the regatta a competitor automatically grants the Organising Authority and the sponsors of the regatta the right in perpetuity to make, use and show, from time to time and at their discretion, any motion pictures, still pictures and live or taped television and other reproductions of him/her during the period of the regatta and in all material related to the regatta without compensation.

20 RISK STATEMENT

RRS 3 states: 'The responsibility for a boat's decision to participate in a race or to continue to race is hers alone.' By participating in this event each competitor agrees and acknowledges that sailing is a potentially dangerous activity with inherent risks. These risks include strong winds and rough seas, sudden changes in weather, failure of equipment, boat handling errors, poor seamanship by other boats, loss of balance on an unstable platform and fatigue resulting in increased risk of injury.

Inherent in the sport of sailing is the risk of permanent, catastrophic injury or death by drowning, trauma, hypothermia or other causes.

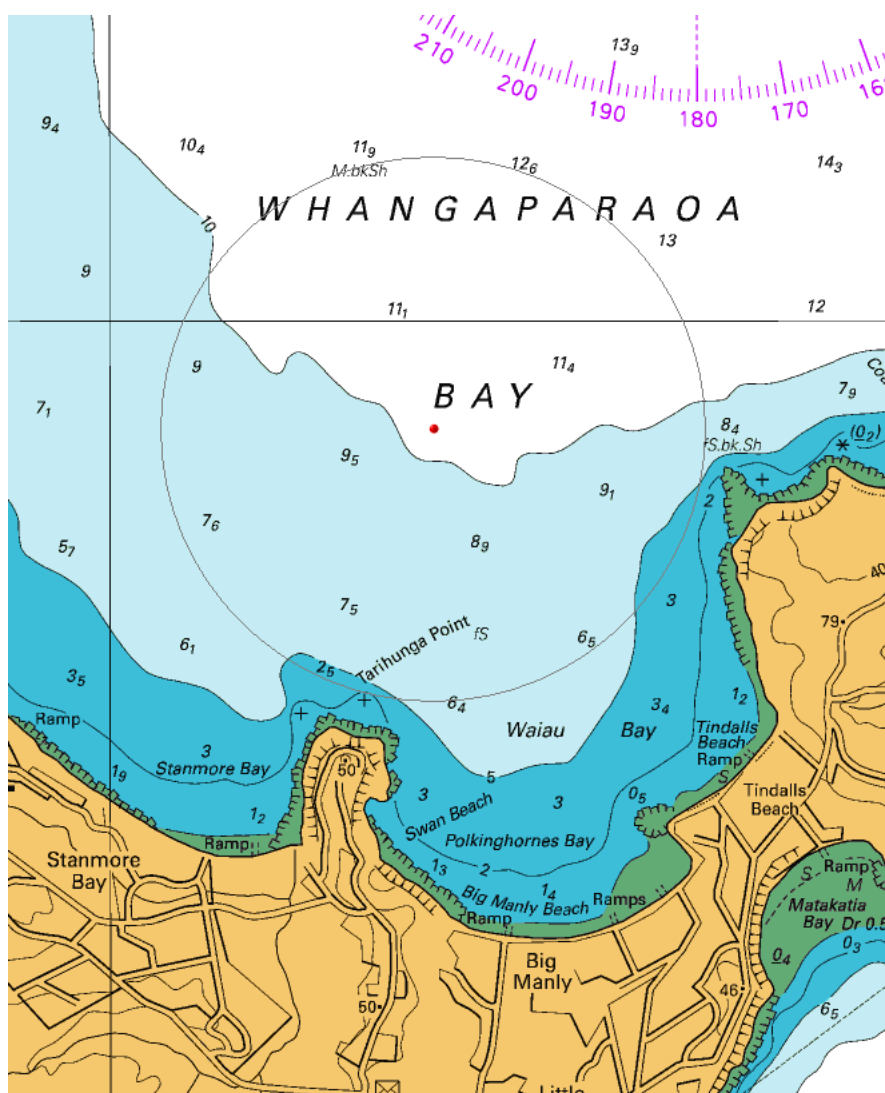
21 INSURANCE

Each participating boat shall be insured with third-party liability insurance with a minimum cover of \$1,000,000 per incident or the equivalent.

22 FURTHER INFORMATION

For further information please contact: sam@yachtingnz.org.nz

Attachment 1
Approx racing areas:



Attachment 2

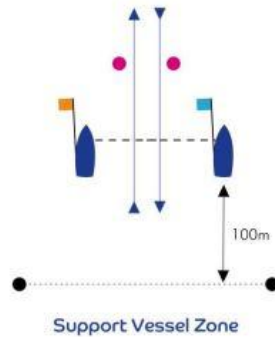
Support Team Vessel Zones:

1. Windward – Leeward Course

22. DRONE

22.1 The use of piloted throughout the Organising with explicit from the

use of drones imposed on competitors,



USAGE [DP]

drones (remotely aircraft) is prohibited event, except by the Authority or those written permission Organising Authority. 22.2 Any unauthorized may result in penalties associated which may include disqualification.

2. Trapezoid Course

