



Olympic and Youth Classes Regatta.  
Friday 28 February to Sunday 2<sup>nd</sup> March 2025

The Organising Authority is Yachting New Zealand, and the event will be hosted by Torbay Sailing Club, 948 Beach Road, Waiake Auckland

### SAILING INSTRUCTIONS (SIs)

**Updates 26/02/2025**

The notation '[NP]' in a rule of the sailing instructions (SIs) means that a boat may not protest another boat for breaking that rule. This changes RRS 60.1(a).

#### 1 RULES

- 1.1 The event is governed by the rules as defined in The Racing Rules of Sailing.
- 1.2 The Yachting New Zealand Safety Regulation Part 1 will apply.
- 1.3 Appendix T, Arbitration, will apply.

#### 2 CHANGES TO SAILING INSTRUCTIONS

2.1 Any change to the sailing instructions will be posted before 0900 on the day it will take effect, except that any change to the schedule of races will be posted by 2000 on the day before it will take effect.

#### 3 COMMUNICATIONS WITH COMPETITORS

3.1 Notices to competitors will be posted on the official notice board located at:

<https://www.yachtingnz.org.nz/nzl-sailing/oceanbridge-sail-auckland>

3.2 The race office is located downstairs at Torbay Sailing Club, telephone 0273811090 email Sam@yachtingnz.org.nz

#### 4 CODE OF CONDUCT

4.1 [DP] Competitors and support persons shall comply with reasonable requests from race officials.

#### 5 SIGNALS MADE ASHORE



- 5.1** Signals made ashore will be displayed on the flagpole of Torbay Sailing Club.
- 5.2** When flag AP is displayed ashore, '1 minute' is replaced with 'not less than 60 minutes for courses A and C' and 'not less than 30 minutes for course B' in Race Signals AP.
- 5.3** [DP][NP] Flag D (and the associated class flag) with one sound means boats shall not leave the shore until this signal is made.

For courses **A and C** the warning signal will not be made before the scheduled time or less than 60 minutes after flag D is displayed.

For course **B** the warning signal will not be made before the scheduled time or less than 30 minutes after flag D is displayed.'

## 6 SCHEDULE OF RACES, RACE AREA ASSIGNMENTS AND TIME OF FIRST WARNING SIGNAL

- 6.1** The race schedule, including the time of the first warning signals and assignment of classes to Race Areas is shown in SI Addendum C.
- 6.2** One extra race per day may be sailed, provided that no class becomes more than one race ahead of schedule and the change is made according to SI 2.1.
- 6.3** To alert boats that a race or sequence of races will begin soon, the orange starting line flag will be displayed with one sound at least five minutes before a warning signal is made.
- 6.4** On Sunday 2<sup>nd</sup> March no warning signal will be made after 1700.

## 7 CLASS FLAGS

### 7.1

Class	Class Flag
ILCA 7	White with red ILCA
ILCA 6	Green with red ILCA
420	White with blue 420 logo
Kitefoiling	Black with white Formula Kite logo
iQFOIL 8m	White with black IQFOIL
iQFOIL 7.3m	Blue with black IQFOIL
Wingfoil	Red with white Wingfoil NZ
49er	Red with black 49er logo
49erFX	Blue with black 49er logo
29er	White with red 29er logo

## 8 RACING AREAS

8.1 SI Addendum A shows the approximate location of the racing areas

## 9 COURSES

9.1 The diagrams in SI Addendum B show the courses, including the approximate angles between legs, the order in which marks are to be passed, and the side on which each mark is to be left.

9.2 Courses will not be shortened. This changes RRS 32.

## 10 MARKS

10.1 Mark descriptions are as follows:

### Course marks - Course A (420, 470, ILCA 6 & ILCA 7)

Mark	Description	New mark description as provided in SI 12
1	Red Cylinder	Blue cylinder
2	Red Cylinder	Pink cylinder
3s/3p	Red Cylinder	N/A
4s/4p	Yellow Cylinder	N/A
Start – Starboard End	Race Committee Signal Vessel	N/A
Start – Port End	Orange tear drop	N/A
Finish – Starboard End	Race Committee Signal Vessel	N/A
Finish – Port End	Orange tear drop	N/A

### Course marks – Course B (iQFOIL and Wingfoil)

Mark	Description	New mark description as provided in SI 12
1	Red Cylinder	Pink Cylinder
4s/4p	Yellow Cylinder	N/A
Start – Starboard End	Race Committee Signal Vessel	N/A
Start – Port End	Orange teardrop	N/A
Finish – Starboard End	Race Committee Signal Vessel	N/A
Finish – Port End	Blue Cylinder	N/A

## iQFOIL Slalom:

Mark	Description	New mark description as provided in SI 12
1	Red Cylinder	Pink Cylinder
2	Yellow Cylinder	N/A
3	Yellow Cylinder	N/A
Start – Starboard End	Race Committee Signal Vessel	N/A
Start – Port End	Orange teardrop	N/A
Finish – Starboard End	Race Committee Signal Vessel	N/A
Finish – Port End	Blue Cylinder	N/A

## Course marks – Course C (49er, 49erFX, Nacra 17 and 29er)

Mark	Description	New mark description as provided in SI 12
1	Red Cylinder	White cylinder
1A	Yellow Cylinder	Black cylinder
4s/4p	Yellow Cylinder	N/A
Start – Starboard End	Race Committee Signal Vessel	N/A
Start – Port End	Red Cylinder	N/A
Finish – Starboard End	Race Committee Signal Vessel	N/A
Finish – Port End	Pink Cylinder	N/A

## 11 THE START

**11.1** The starting line is between a staff displaying an orange flag on the race committee signal vessel at the starboard end and the course side of the port-end starting mark.

**11.2** [DP] Boats whose warning signal has not been made shall avoid the starting area during the starting sequence for other races.

**11.3** A boat that does not start within four(4) minutes after her starting signal will be scored Did Not Start without a hearing. This changes RRS A5.1 and A5.2.

**11.4** All classes on course B shall be started using the following signals:

Minutes before Starting Signal	Visual signal	Sound signal	Means
3	Class flag or heat number if applicable	One	Warning signal
2	U or Black flag displayed	One	Preparatory signal
1	U or Black flag removed	One long	One-minute signal
0	Class flag removed	One	Starting signal

This changes RRS Appendix B3 rules 26.1 and 26.2.

## 12 CHANGE OF THE NEXT LEG OF THE COURSE

**12.1** To change the next leg of the course, the race committee will lay a new mark (or move the finishing line) and remove the original mark as soon as practicable. When in a subsequent change a new mark is replaced, it will be replaced by an original mark.

## 13 THE FINISH

**13.1** For all courses the finishing line is between a staff displaying a blue flag on the finishing mark at the starboard end and the course side of the port end finishing mark.

## 14 TIME LIMITS [AND TARGET TIMES]

**14.1** The Race Time Limit (see RRS 35) and the Target Time are shown in the table below.

Class/ Format	Target Time	Race Time Limit
ILCA 7	45	70
ILCA 6	45	70
420	45	70
Wingfoil	12	25
<b>Kitefoil</b>	<b>12</b>	<b>25</b>
iQFOIL 8M - Course	16	24
iQFOIL 8M - Slalom	4-5	8
iQFOIL 7.3M - Course	16	24
iQFOIL 7.3M - Slalom	4-5	8
49er	30	45
49erFX	30	45
29er	30	45

**14.2** The race committee may award a finishing score to a boat that is still racing by displaying to her from a committee vessel (which may be in motion) flag W with one sound signal. A boat so notified is no longer required to sail the course (changing rule 28), shall stop racing and shall return

to the starting area, or return ashore if there is no more racing. A finishing score under this Sailing Instruction will be the score she would have received had she sailed the course and finished within any time limit, without gaining or losing any place. However, when two or more boats that are overlapped are notified, they will be scored as if they were tied.

## 15 HEARING REQUESTS

**15.1** For each class, the protest time limit is 60 minutes after the last boat in that class finishes the last race of the day or the race committee signals no more racing today, whichever is later. The time will be posted on the official notice board.

**15.2** Hearing request forms are available from the registration desk at each launching venue.

**15.3** Notices will be posted no later than 30 minutes after the protest time limit to inform competitors of hearings in which they are parties or named as witnesses. Hearings will be held in the protest rooms, located inside the Torbay Sailing Club at the time posted.

**15.4** A list of boats that have been penalized for breaking RRS 42 under Appendix P will be posted.

## 16 [NP][DP] SAFETY REGULATIONS

**16.1** All competitors shall sign-on each time they leave the shore to enter the course and shall sign-off each time they come ashore from the course inside the Oceanbridge marquee on the Waiake Beach Reserve.

**16.2** A boat that retires from a race or returns to the launching area before she has finished the last race of the day shall notify the race committee as soon as possible.

**16.3** If a boat does not sign-on, a one-point scoring penalty will be added to the boat's race score for the first race of the day. If a boat does not sign-off by the end of protest time a one-point scoring penalty will be added to the boat's race score for the last race of the day. However, she shall not be scored worse than DNF. This changes RRS63.1 and RRS A5.

## 17 [DP] REPLACEMENT OF CREW OR EQUIPMENT

**17.1** Substitution of competitors in double handed classes is not allowed without prior written approval of the protest committee.

**17.2** Substitution of damaged or lost equipment is not allowed unless authorized in writing by the technical committee. Requests for substitution shall be made to the committee at the first reasonable opportunity, which may be after the race.

## 18 [DP] EQUIPMENT AND MEASUREMENT CHECKS

**18.1** A boat or equipment may be inspected at any time for compliance with the class rules, notice of race and sailing instructions.

**18.2** When instructed by a race official on the water, a boat shall proceed to a designated area for inspection.

**18.3** RRS 78.1 shall apply at all times while racing.

## **19 [DP] SUPPORT TEAMS**

**19.1** All support vessels shall register with the organising authority with the names of the competitors they are supporting at registration.

**19.2** All support vessels shall keep at least 100m from the racing area whilst boats are racing.

**19.3** All support person vessels shall always have an engine safety cut out switch (kill cord) attached to the driver while the engine is running.

**19.4** Sufficient personal flotation devices for each crew member must be carried or worn in all support vessels at all times in accordance with New Zealand Maritime Law.

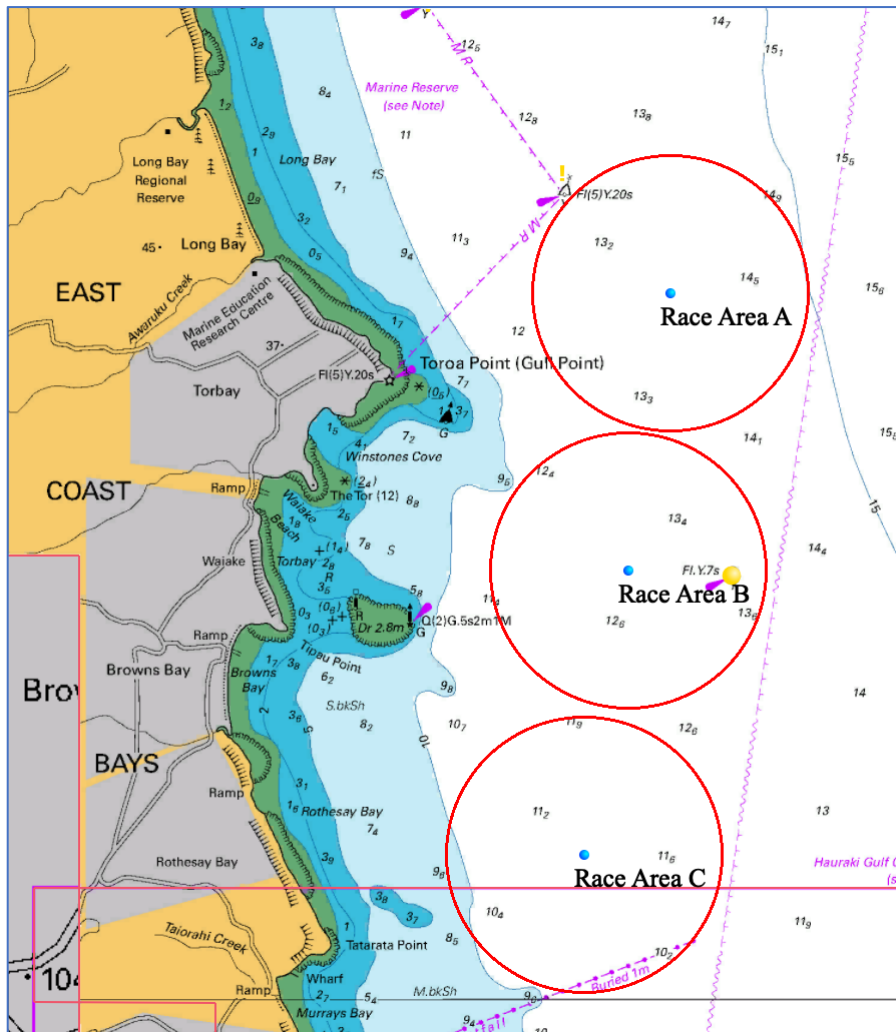
## **20 [NP][DP] HAUL OUT RESTRICTIONS**

**20.1** All boats will be required to launch and retrieve from the beach adjacent to the Torbay Sailing Club except with and according to the terms of prior written permission of the race committee.

## **21 RISK STATEMENT**

RRS 3 states: 'The responsibility for a boat's decision to participate in a race or to continue to race is hers alone.' By participating in this event each competitor agrees and acknowledges that sailing is a potentially dangerous activity with inherent risks. These risks include strong winds and rough seas, sudden changes in weather, failure of equipment, boat handling errors, poor seamanship by other boats, loss of balance on an unstable platform and fatigue resulting in increased risk of injury. Inherent in the sport of sailing is the risk of permanent, catastrophic injury or death by drowning, trauma, hypothermia or other causes.

## Addendum A Racing Areas



**Course A:** ILCA 6, ILCA 7, 420,

**Course B:** Kitefoil iQFOIL 9m, iQFOIL 8m, Wingfoil

**Course C:** 29er, 49er, 49erFX,



Addendum B Courses

420, 470, ILCA 6, ILCA 7:

**I**

Course: Inner Trapezoid

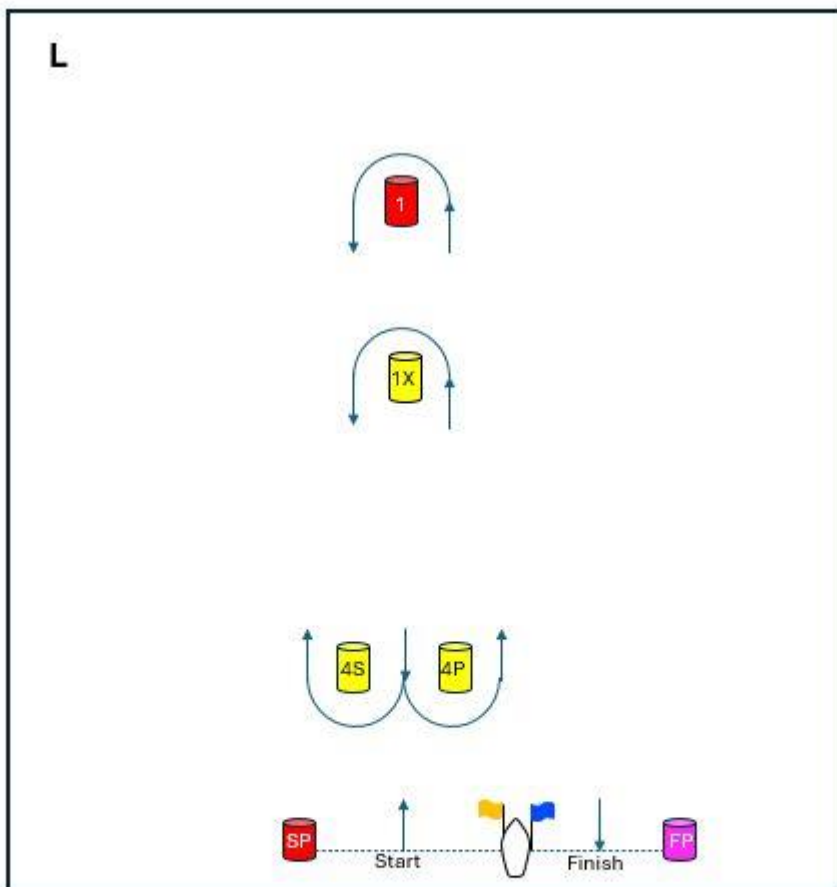
Signal	Mark Rounding Order
I2	Start – 1 – 4s/4p – 1 – 2 – 3p – Finish
I3	Start – 1 – 4s/4p – 1 – 4s/4p – 1 – 2 – 3p – Finish

**O**

Course: Outer Trapezoid

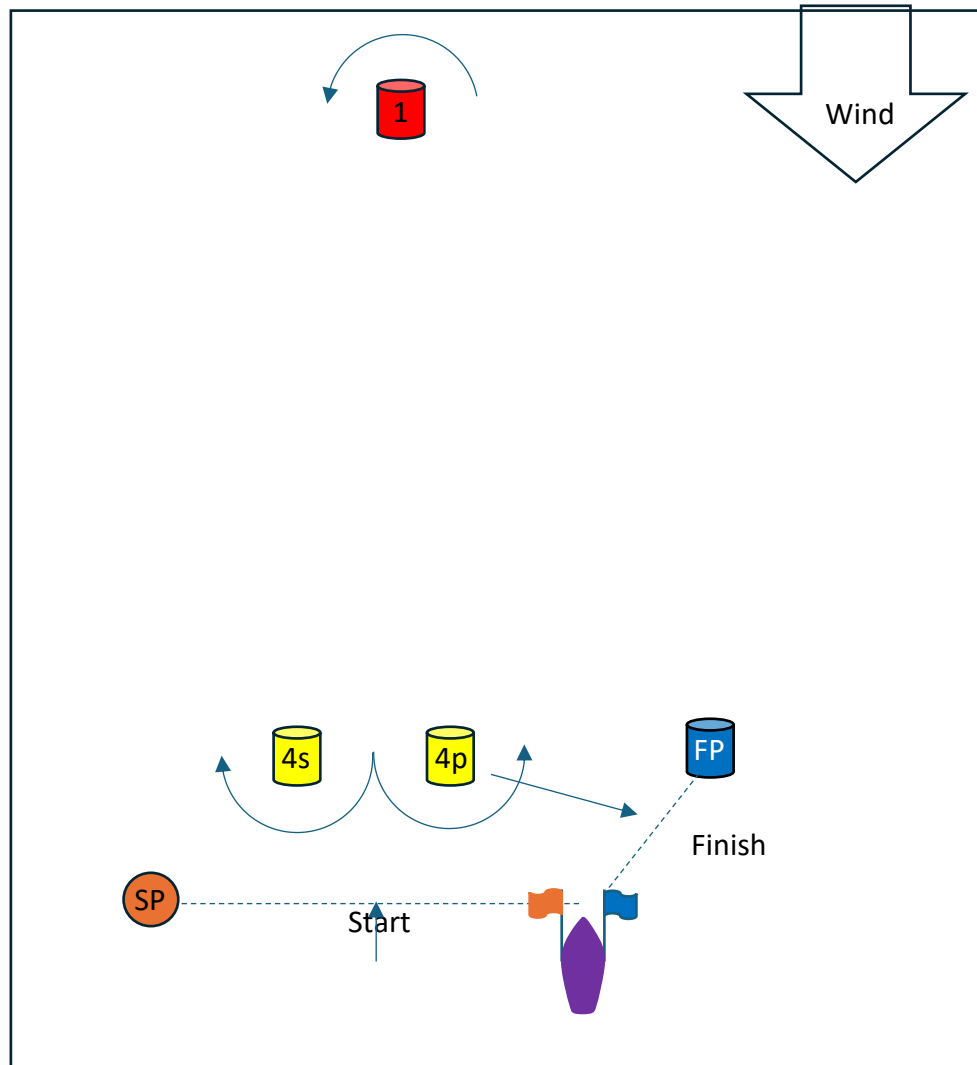
Signal	Mark Rounding Order
O2	Start – 1 – 2 – 3s/3p – 2 – 3p – Finish
O3	Start – 1 – 2 – 3s/3p – 2 – 3s/3p – 2 – 3p – Finish

49er, 49erFX, 29er:



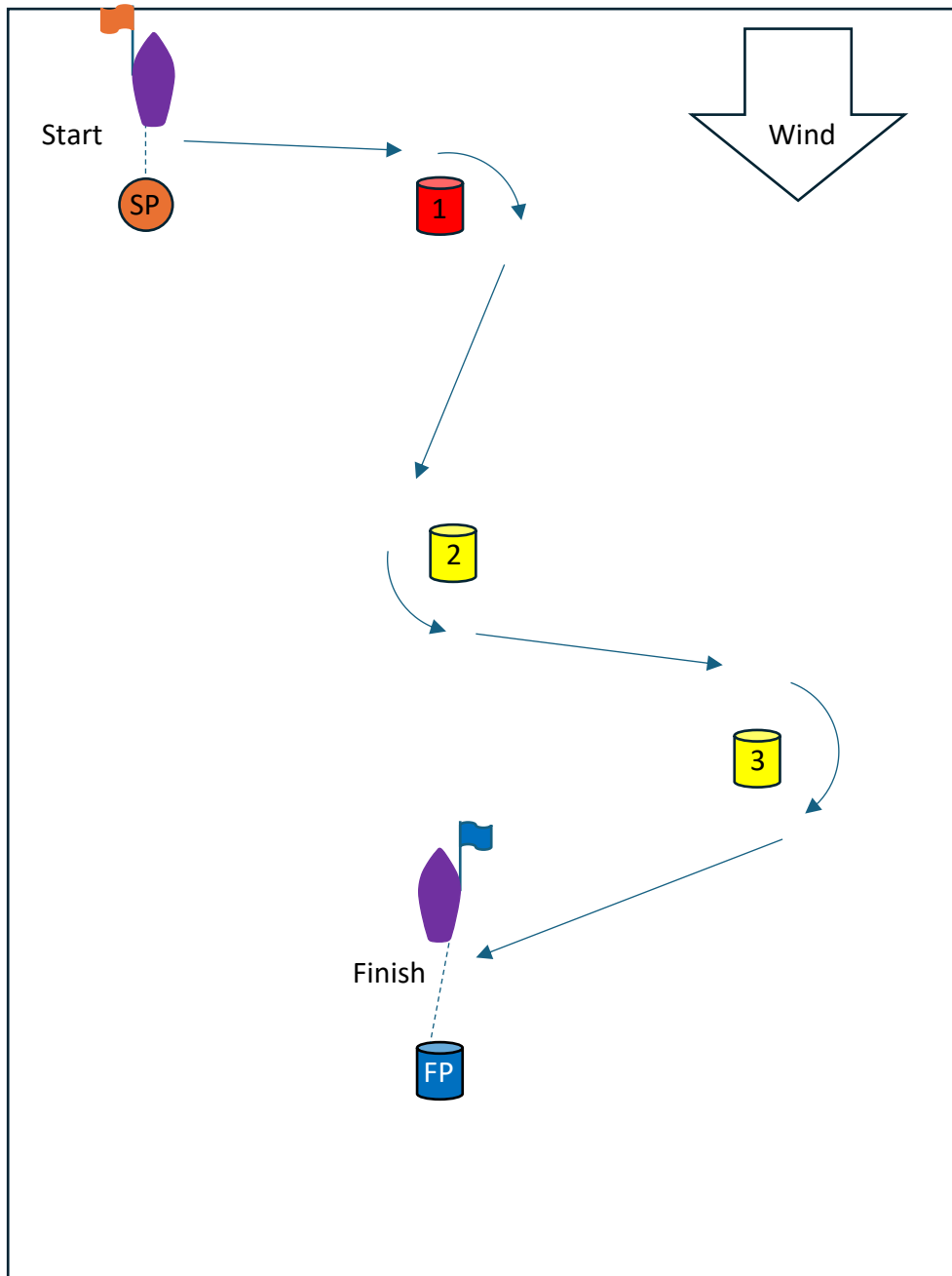
Course	Windward/Leeward
Signal	Mark Rounding Order
L2	Start – 1 – 4S/4P – 1 – Finish
L3	Start – 1 – 4S/4P – 1 – 4S/4P – 1 – Finish
LX2	Start – 1X – 4S/4P – 1X – Finish
LX3	Start – 1X – 4S/4P – 1X – 4S/4P – 1X – Finish

**IQ Foil, Wingfoil, Kites,**



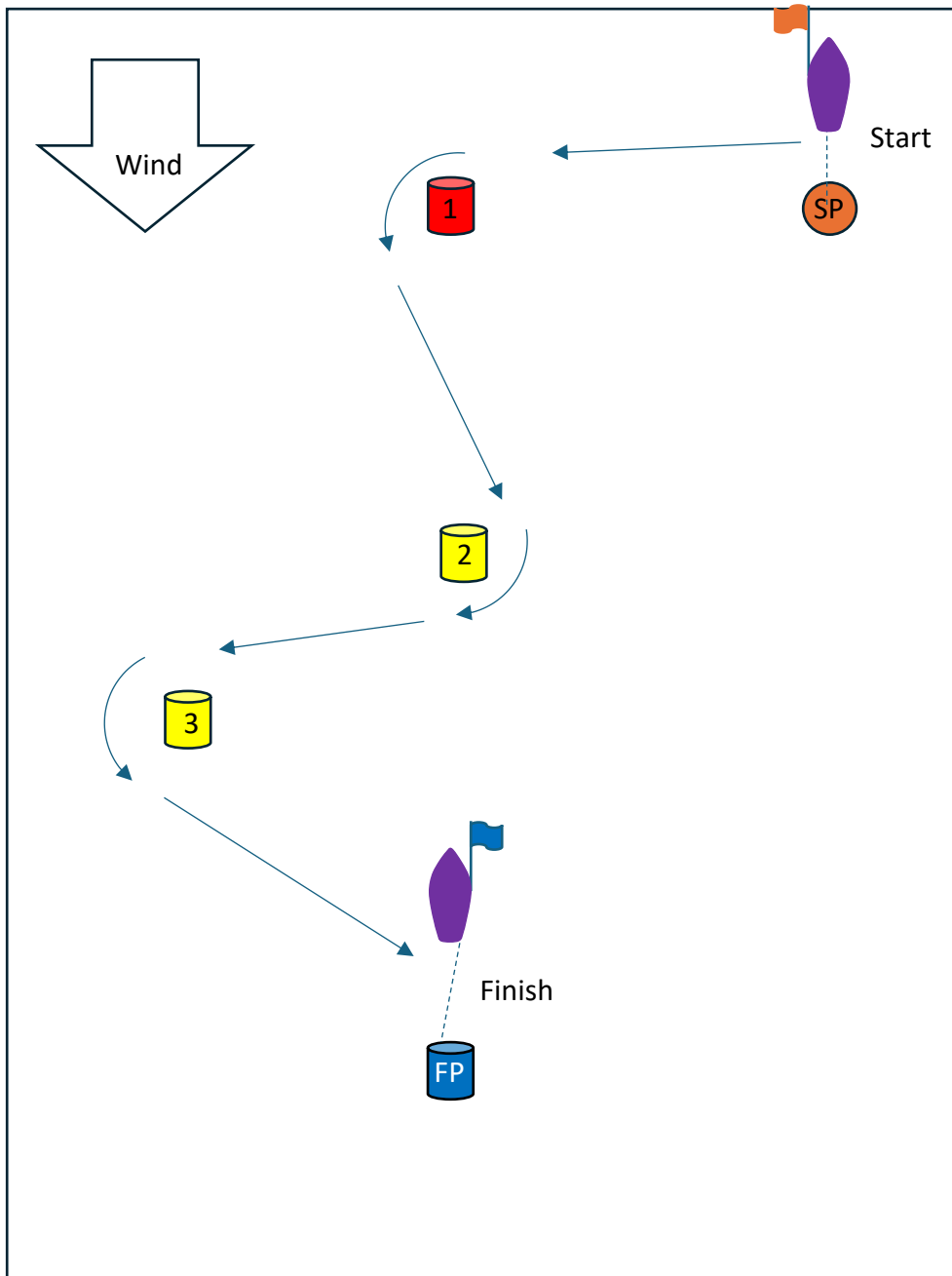
Course	Windward/Leeward
Signal	Mark Rounding Order
L2	Start – 1p – 4s/4p – 1p – 4pp - Finish
L3	Start – 1p – 4s/4p – 1p – 4s/4p – 1p – 4pp – Finish

**IQ Foil, Wingfoil Slalom P:**



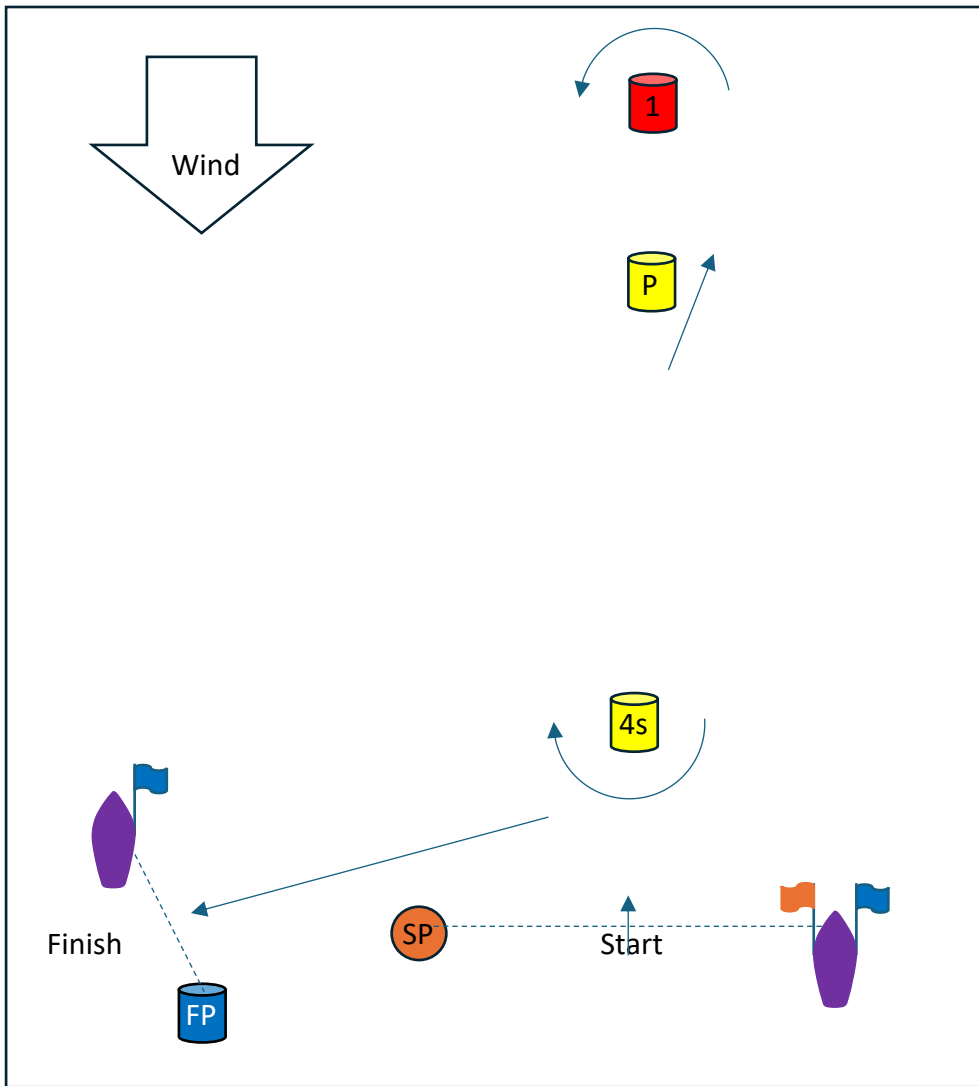
Course	Windward/Leeward
Signal	Mark Rounding Order
PD3	Start – 1s – 2p – 3s – Finish

**IQ Foil, Wingfoil Slalom S:**



Course	Windward/Leeward
Signal	Mark Rounding Order
SD3	Start – 1p – 2s – 3p – Finish

# Kitefoil



Course	Kitefoil
<i>Signal</i>	<i>Mark Rounding Order</i>
X1	Start – Pp – 1p – Pp – 4s - Finish
X2	Start – Pp – 1p – 4s – Pp – 1p – Pp – 4s - Finish
X3	Start – Pp – 1p – 4s – Pp – 1p – Pp – 4s – 1p – Pp – 4s - Finish

## Addendum C – Schedule of races and time of warning signal

Class	Course Area	Total Races	Friday 28 <sup>th</sup> February 2025		Saturday 1 <sup>st</sup> March 2024		Sunday 2 <sup>nd</sup> March 2025	
			First Warning	Number of races	First Warning	Number of races	First Warning	Number of races
420	A	10	1230	3	1200	4	1100	3
ILCA 7	A	10	1235	3	1210	4	1105	3
ILCA 6	A	10	1240	3	1205	4	1110	3
iQFOIL 8m	B	15	1230	5	1200	5	1100	5
iQFOIL 7.3m	B	15	1230	5	1200	5	1100	5
Wingfoil	B	15	1230	5	1200	5	1100	5
Kitefoil	B	15	1230	5	1200	5	1100	5
29er	C	12	1230	4	1200	4	1100	4
49er	C	12	1235	4	1205	4	1105	4
49erFx	C	12	1240	4	1210	4	1110	4