



Olympic and Youth Classes Regatta.
Friday 24th February to Sunday 26th February 2023

The Organising Authority is Yachting New Zealand, and the event will be hosted by Torbay Sailing Club, 948 Beach Road, Waiake Auckland

SAILING INSTRUCTIONS (SIs)

The notation '[NP]' in a rule of the sailing instructions (SIs) means that a boat may not protest another boat for breaking that rule. This changes RRS 60.1(a).

1 RULES

- 1.1 The event is governed by the rules as defined in The Racing Rules of Sailing.
- 1.2 The Yachting New Zealand Safety Regulation Part 1 will apply.
- 1.3 Appendix T, Arbitration, will apply.

2 CHANGES TO SAILING INSTRUCTIONS

- 2.1 Any change to the sailing instructions will be posted before 0900 on the day it will take effect, except that any change to the schedule of races will be posted by 2000 on the day before it will take effect.

3 COMMUNICATIONS WITH COMPETITORS

- 3.1 Notices to competitors will be posted on the official notice board located at <https://www.yachtingnz.org.nz/nzl-sailing/oceanbridge-nzl-sailing-regatta>
- 3.2 The race office is located downstairs at Torbay Sailing Club, telephone 0273811090 email Sam@yachtingnz.org.nz

4 CODE OF CONDUCT

- 4.1 [DP] Competitors and support persons shall comply with reasonable requests from race officials.

5 SIGNALS MADE ASHORE

- 5.1 Signals made ashore will be displayed on the flagpole of Torbay Sailing Club.



5.2 When flag AP is displayed ashore, '1 minute' is replaced with 'not less than 30 minutes' in Race Signals AP.

5.3 [DP][NP] Flag D (and the associated class flag) with one sound means 'Boats shall not leave the shore until this signal is made. The warning signal will not be made before the scheduled time or less than 30 minutes after flag D is displayed.'

6 SCHEDULE OF RACES, RACE AREA ASSIGNMENTS AND TIME OF FIRST WARNING SIGNAL

6.1 The race schedule, including the time of the first warning signals and assignment of classes to Race Areas is shown in SI Addendum C.

6.2 One extra race per day may be sailed, provided that no class becomes more than one race ahead of schedule and the change is made according to SI 2.1.

6.3 To alert boats that a race or sequence of races will begin soon, the orange starting line flag will be displayed with one sound at least five minutes before a warning signal is made.

6.4 On Sunday 26th February no warning signal will be made after 15:00.

7 CLASS FLAGS

7.1

Class	Class Flag
ILCA 7	White with red stardust laser symbol
ILCA 6	Blue with red stardust laser symbol
Kitefoiling	Black with white Formula Kite logo
470	White with blue 470 logo
420	Light Blue with 420 logo
49er	Red with black 49er logo
49erFX	Blue with black 49er logo
29er	White with red 29er logo
iQFOIL 9M	Yellow with white F
iQFOIL 8M	Blue with white F

8 RACING AREAS

8.1 SI Addendum A shows the approximate location of the racing areas.

9 COURSES

9.1 The diagrams in SI Addendum B show the courses, including the approximate angles between legs, the order in which marks are to be passed, and the side on which each mark is to be left.

9.2 Courses will not be shortened. This changes RRS 32.

10 MARKS

10.1 Mark descriptions are as follows:

Course marks - Course A (420, 470, ILCA 6 & ILCA 7)

Mark	Description	New mark description as provided in SI 12
1	Large Red Cylinder	Blue cylinder
2	Small Red Cylinder	Pink cylinder
3s/3p	Small Red Cylinder	N/A
4s/4p	Small Yellow Cylinder	N/A
Start – Starboard End	Race Committee Signal Vessel	N/A
Start – Port End	Orange tear drop	N/A
Finish – Starboard End	Race Committee Signal Vessel	N/A
Finish – Port End	Orange tear drop	N/A

Course marks – Course B (49er, 49erFX and 29er)

Mark	Description	New mark description as provided in SI 12
1	Large yellow Cylinder	Blue
1A	Small red Cylinder	Black
4s/4p	Small Yellow Cylinder	
Start – Starboard End	Race Committee Signal Vessel	N/A
Start – Port End	Small Red Cylinder	N/A
Finish – Starboard End	Small Pink Cylinder	N/A
Finish – Port End	Race Committee Signal Vessel	N/A

Course marks – Course C (iQFOIL and Kitefoil)

Mark	Description	New mark description as provided in SI 12
1	Large Red Cylinder	Small Pink Cylinder
4s/4p	Small Yellow Cylinder	N/A
Start – Starboard End	Race Committee Signal Vessel	N/A
Start – Port End	Small Black Cylinder	N/A
Finish – Starboard End	Race Committee Signal Vessel	N/A
Finish – Port End	Small Blue Cylinder	N/A
iQ Foil Slalom Course		
Mark	Description	
Start Starboard End	Race Committee Vessel	
Start Pin Port End	Small Black Cylinder	
1	Large Red Cylinder	
2	Small Yellow Cylinder	
3	Small Yellow Cylinder	
Finish Starboard End	Race Committee Vessel	
Finish Port End.	Small Black Cylinder	

11 THE START

11.1 The starting line is between a staff displaying an orange flag on the race committee signal vessel at the starboard end and the course side of the port-end starting mark

11.2 [DP] Boats whose warning signal has not been made shall avoid the starting area during the starting sequence for other races.

11.3 A boat that does not start within four(4) minutes after her starting signal will be scored Did Not Start without a hearing. This changes RRS A5.1 and A5.2.

11.4 All classes on course C shall be started using the following signals:

Minutes before Starting Signal	Visual signal	Sound signal	Means
3	Class flag or heat number if applicable	One	Warning signal
2	U or Black flag displayed	One	Preparatory signal
1	U or Black flag removed	One long	One-minute signal

0	Class flag removed	One	Starting signal
---	--------------------	-----	-----------------

This changes RRS Appendix B3 rules 26.1 and 26.2.

12 CHANGE OF THE NEXT LEG OF THE COURSE

12.1 To change the next leg of the course, the race committee will lay a new mark (or move the finishing line) and remove the original mark as soon as practicable. When in a subsequent change a new mark is replaced, it will be replaced by an original mark.

13 THE FINISH

13.1 For the trapezoid the finishing line is between a staff displaying a blue flag on the finishing mark at the starboard end and the course side of the port end finishing mark.

For the windward leeward courses, the finishing line is between a staff displaying a blue flag on the finishing mark at the starboard end and the port end finishing mark.

14 TIME LIMITS [AND TARGET TIMES]

14.1 The Race Time Limit (see RRS 35) and the Target Time are shown in the table below.

Class/ Format	Target Time	Race Time Limit
ILCA 7	35	50
ILCA 6	35	50
Kitefoiling	10	25
470	35	50
420	35	50
49er	25	45
49erFX	25	45
29er	25	45
iQFOIL 9M - Course	18	24
iQFOIL 9M - Slalom	6	8
iQFOIL 8M - Course	18	24
iQFOIL 8M - Slalom	6	8

14.2 The race committee may award a finishing score to a boat that is still racing by displaying to her from a committee vessel (which may be in motion) flag W with one sound signal. A boat so notified is no longer required to sail the course (changing rule 28), shall stop racing and shall return to the starting area, or return ashore if there is no more racing. A finishing score under this Sailing Instruction will be the score she would have received had she sailed the course and finished within any time limit, without gaining or losing any place. However, when two or more boats that are overlapped are notified, they will be scored as if they were tied.

15 HEARING REQUESTS

15.1 For each class, the protest time limit is 60 minutes after the last boat in that class finishes the last race of the day or the race committee signals no more racing today, whichever is later. The time will be posted on the official notice board.

15.2 Hearing request forms are available from the registration desk at each launching venue.

15.3 Notices will be posted no later than 30 minutes after the protest time limit to inform competitors of hearings in which they are parties or named as witnesses. Hearings will be held in the protest rooms, located inside the Torbay Sailing Club at the time posted.

15.4 A list of boats that have been penalized for breaking RRS 42 under Appendix P will be posted.

16 [NP][DP] SAFETY REGULATIONS

16.1 Competitors shall wear a personal flotation device securely fastened at all times when afloat except briefly while changing or adjusting clothing or personal equipment. Wet suits and dry suits do not constitute adequate personal buoyancy. This changes RRS 40.

16.2 All competitors or their representative shall sign-on each time they leave the shore to enter the course and shall sign-off each time they come ashore from the course.

16.3 A boat that retires from a race or returns to the launching area before she has finished the last race of the day shall notify the race committee as soon as possible.

16.4 If a boat does not sign-on or sign-off, for each infringement, a scoring penalty of 10% (rounded up to the next whole number) of the number of entries will, without a hearing, be added to the boats score. However, she shall not be scored worse than DSQ. This changes RRS 63.1, Requirements for a Hearing, and RRS A5, Scores Determined by the Race Committee.

17 [DP] REPLACEMENT OF CREW OR EQUIPMENT

17.1 Substitution of competitors in double handed classes is not allowed without prior written approval of the protest committee.

17.2 Substitution of damaged or lost equipment is not allowed unless authorized in writing by the technical committee. Requests for substitution shall be made to the committee at the first reasonable opportunity, which may be after the race.

18 [DP] EQUIPMENT AND MEASUREMENT CHECKS

18.1 A boat or equipment may be inspected at any time for compliance with the class rules, notice of race and sailing instructions.

18.2 When instructed by a race official on the water, a boat shall proceed to a designated area for inspection.

18.3 RRS 78.1 shall apply at all times while racing.

19 [DP] SUPPORT TEAMS

19.1 All support vessels shall register with the organising authority with the names of the competitors they are supporting at registration.

19.2 All support vessels shall keep at least 100m from the racing area whilst boats are racing.

19.3 All support person vessels shall always have an engine safety cut out switch (kill cord) attached to the driver while the engine is running.

19.4 Sufficient personal flotation devices for each crew member must be carried or worn in all support vessels at all times in accordance with New Zealand Maritime Law.

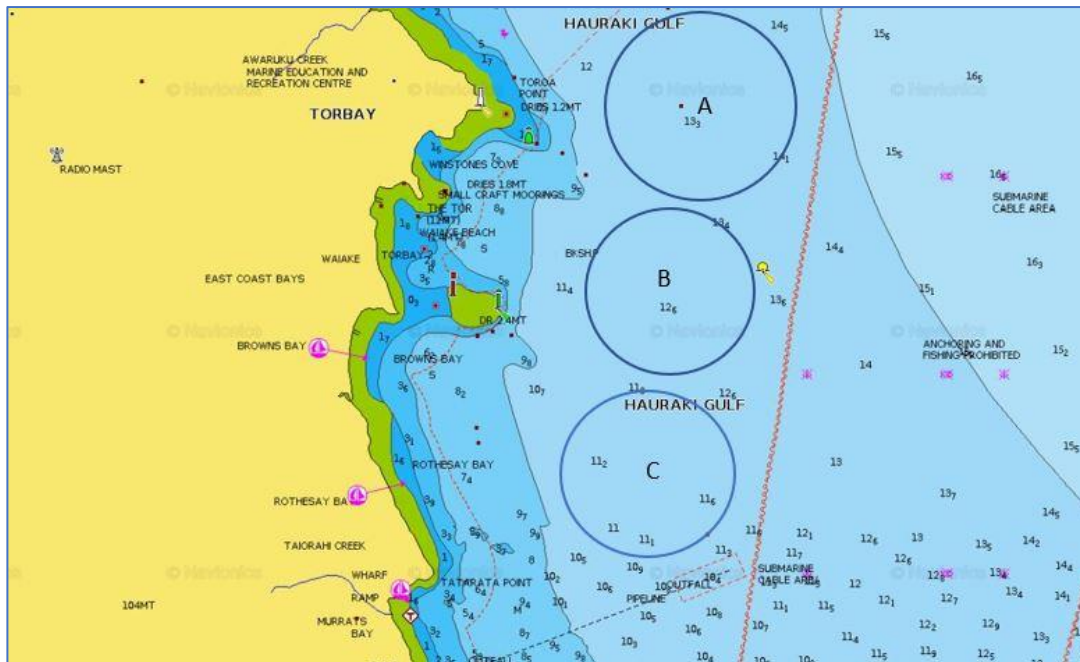
20 [NP][DP] HAUL OUT RESTRICTIONS

20.1 All boats will be required to launch and retrieve from the beach adjacent to the Torbay Sailing Club except with and according to the terms of prior written permission of the race committee.

21 RISK STATEMENT

RRS 3 states: 'The responsibility for a boat's decision to participate in a race or to continue to race is hers alone.' By participating in this event each competitor agrees and acknowledges that sailing is a potentially dangerous activity with inherent risks. These risks include strong winds and rough seas, sudden changes in weather, failure of equipment, boat handling errors, poor seamanship by other boats, loss of balance on an unstable platform and fatigue resulting in increased risk of injury. Inherent in the sport of sailing is the risk of permanent, catastrophic injury or death by drowning, trauma, hypothermia or other causes.

Addendum A Racing Areas



Course A: ILCA 6, ILCA 7, 420, 470

Course B: 29er, 49er, 49erFX

Course C: iQFOIL 8m, iQFOIL 9m, Kitefoil

Addendum B Courses

420, 470, ILCA 6, ILCA 7:

I

Course: Inner Trapezoid

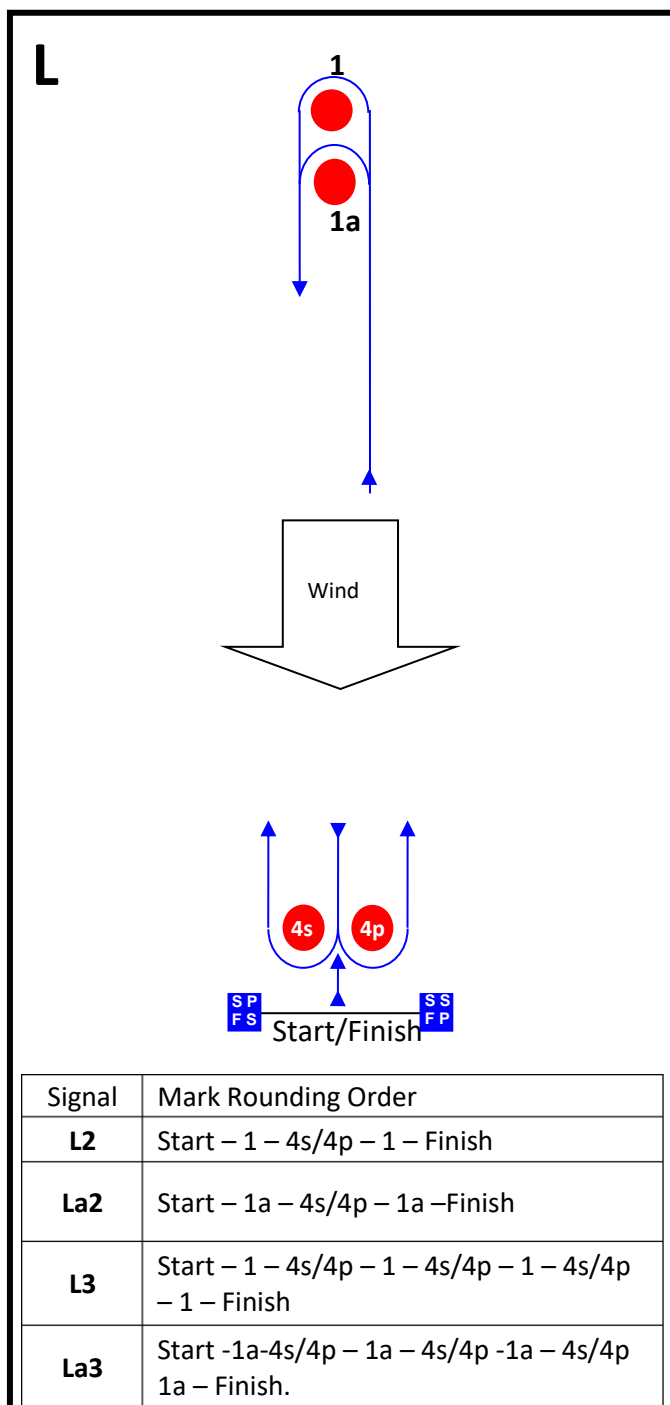
Signal	Mark Rounding Order
I2	Start – 1 – 4s/4p – 1 – 2 – 3p – Finish
I3	Start – 1 – 4s/4p – 1 – 4s/4p – 1 – 2 – 3p – Finish

O

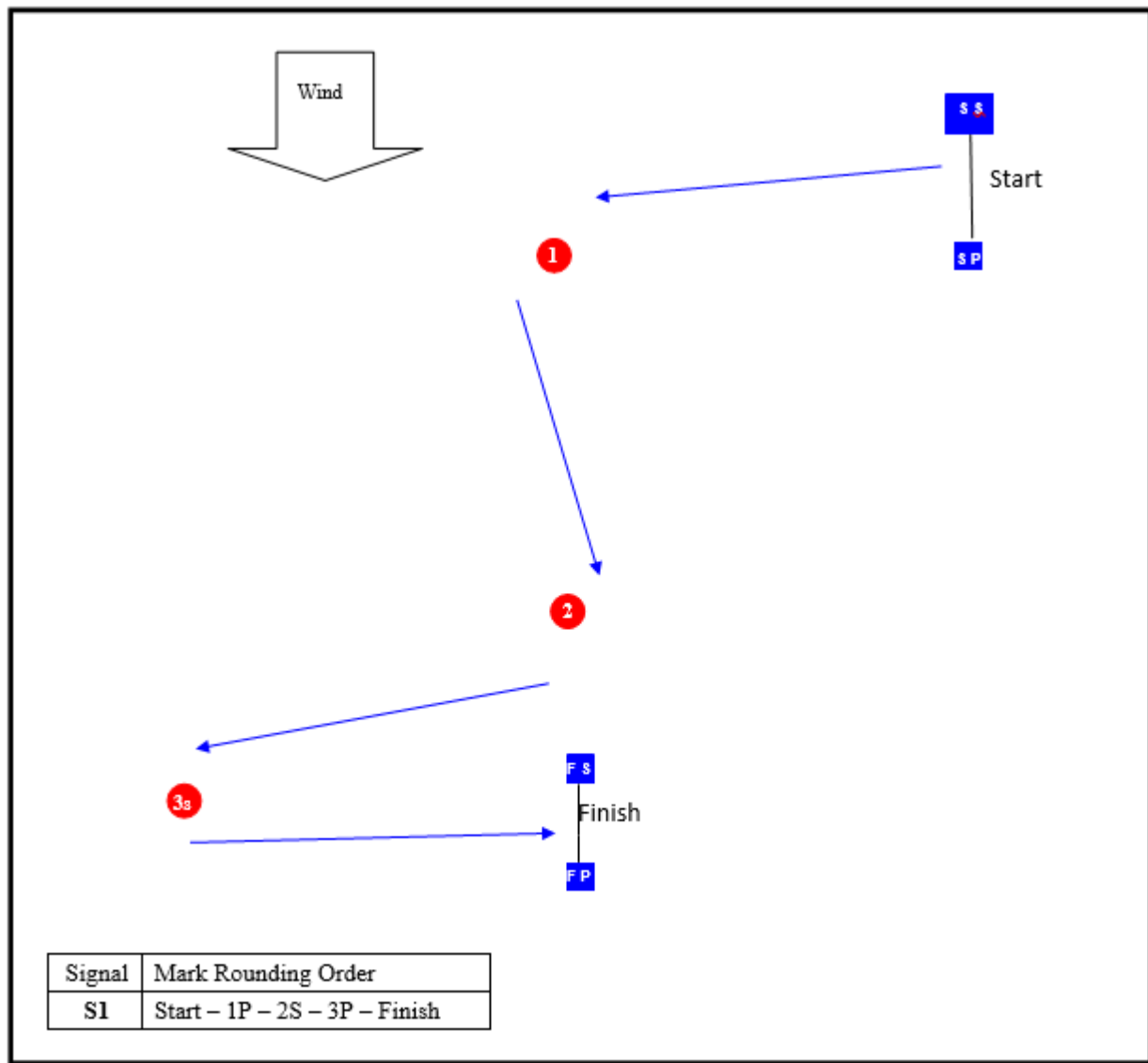
Course: Outer Trapezoid

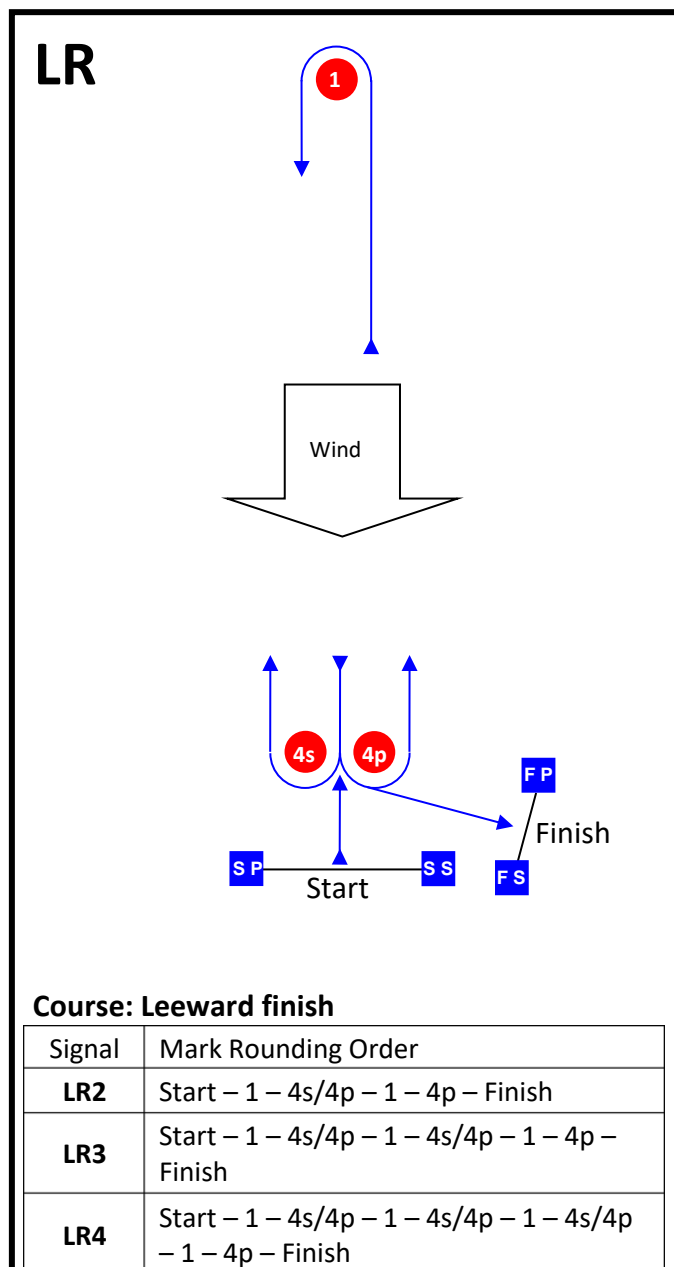
Signal	Mark Rounding Order
O2	Start – 1 – 2 – 3s/3p – 2 – 3p – Finish
O3	Start – 1 – 2 – 3s/3p – 2 – 3s/3p – 2 – 3p – Finish

49er, 49erFX, 29er:



iQFOIL Slalom:





Addendum C – Schedule of race and time of warning signal

Class	Course Area	Total Races	Friday 24 th February 2023		Saturday 25 th February 2023		Sunday 26 th February 2023	
			First Warning	Number of races	First Warning	Number of races	First Warning	Number of races
420	A	9	1255	3	1255	3	1055	3
470	A	9	1300	3	1300	3	1100	3
ILCA 6	A	9	1305	3	1305	3	1105	3
ILCA 7	A	9	1310	3	1310	3	1110	3
29er	B	10	1255	3	1255	4	1055	3
49erFX	B	10	1300	3	1300	4	1100	3
49er	B	10	1305	3	1305	4	1105	3
iQFOIL 8m	C	12	1257	4	1257	4	1057	4
iQFOIL 9m	C	18	1300	6	1300	6	1100	6
Kitefoil	C	12	1303	4	1303	4	1103	4