



ELLIOTT 5.9

2023 New Zealand Elliott 5.9 National Championships

23rd – 25th March 2023

Sailing Instructions

The Organising Authority is the Queen Charlotte Yacht Club (QCYC)
Shelley Beach Picton | PO Box 47, Picton | Tel (03) 573 6984

The notation '[DP]' in a rule in the Notice of Race means that the penalty for a breach of that rule may, at the discretion of the protest committee, be less than disqualification and the notation [NP] in a rule in the Notice of Race means rules that are not grounds for protest by a boat for breaking that rule. This changes RRS 64.2 & 60.1(a)

1 RULES

- 1.1 The event is governed by the rules as defined in *The Racing Rules of Sailing* and the Elliott 5.9 Class Association.
- 1.2 The Yachting New Zealand Safety Regulations Part 1 shall apply.
- 1.3 Appendix T, *Arbitration*, will apply.

2 CHANGES TO SAILING INSTRUCTIONS

- 2.1 Any change to the sailing instructions will be posted before 0900 on the day it will take effect, except that any change to the schedule of races will be posted by 2000 on the day before it will take effect.

3 COMMUNICATIONS WITH COMPETITORS

- 3.1 Notices to competitors will be posted on the official notice board located outside the main entrance to the QCYC Clubhouse. Notices may also be posted on the Elliott 5.9 website (<https://elliott59.weebly.com>) and posted in the Elliott 5.9 whatsapp group.
- 3.2 The race office is located upstairs in the QCYC Clubhouse.

4 CODE OF CONDUCT

- 4.1 [DP] Competitors and support persons shall comply with reasonable requests from race officials.

5 SIGNALS MADE ASHORE

- 5.1 Signals made ashore will be displayed on the flagpole at the Northern end of the QCYC Club House.

6 SCHEDULE OF RACES

6.1

Date	Number of races	Time of First Warning Signal
23 March 2023	5	1055
24 March 2023	5	1055
25 March 2023	5	1055

6.2 Up to two extra races per day may be sailed, provided the change is made according to SI 2.1.

6.3 To alert boats that a race or sequence of races will begin soon, the orange starting line flag will be displayed with one sound at least five minutes before a warning signal is made.

7 CLASS FLAGS

7.1 The class flag will be a black background with a white class insignia.

8 RACING AREA

8.1 The racing area is the waters known as Queen Charlotte Sound. Refer to Addendum A.

9 COURSES

9.1 Addendum B shows the courses to be sailed, including the approximate angles between legs, the order in which marks are to be passed, and the side on which each mark is to be left.

9.2 No later than the warning signal, the race committee signal vessel will display the approximate compass bearing of the first leg.

10 MARKS

10.1 Mark descriptions are shown in Addendum B – Courses.

10.2 In the event that a gate mark is missing and has not been replaced with an object displaying flag M, the remaining mark shall be rounded to port.

11 OBSTRUCTIONS

11.1 There are no areas designated as obstructions.

12 THE START

12.1 The starting line will be between a staff displaying an orange flag on the Race Committee signal vessel at the starboard end and the course side of the port end starting mark.

12.2 A boat that does not start within 4 minutes after her starting signal will be scored Did Not Start without a hearing. This changes RRS A5.1 and A5.2.

12.3 If any part of a boat's hull is on the course side of the starting line at her starting signal and she is identified, the race committee will attempt to Broadcast her name and/or sail number on VHF channel 77. Failure to make a broadcast, failure of her to hear such a broadcast, or the order in which boats are broadcast will not be grounds for a request for redress. This changes RRS 62.1(a).

13 CHANGE OF THE NEXT LEG OF THE COURSE

13.1 To change the next leg of the course, the race committee will lay a new mark (or move the finishing line) and remove the original marks as soon as practicable. When in a subsequent change a new mark is replaced, it will be replaced by an original mark.

13.2 If the windward mark is moved, Mark 1a will not be re-laid. This changes RRS 33.

14 THE FINISH

14.1 The finishing line will be between a staff displaying a blue flag on the Race Committee signal vessel and the course side of the finishing mark.

15 PENALTY SYSTEM

15.1 RRS 44.1 is changed so that the 'Two-Turns' penalty is replaced by the 'One-Turn' Penalty.

16 TIME LIMITS AND TARGET TIMES

16.1 The Race Time Limit (see RRS 35), Target Time and the Finishing Window are shown in the table below.

Target Time	Race Time Limit	Finishing Window
40 Minutes	60 Minutes	10 Minutes

16.2 The Finishing Window is the time for boats to finish after the first boat sails the course and finishes. Boats failing to finish within the Finishing Window, and not subsequently retiring, penalized or given redress, will be scored Time Limit Expired (TLE) without a hearing. A boat scored TLE shall be scored points for the finishing place one more than the points scored by the last boat that finished within the Finishing Window. This changes RRS 35, A5.1, A5.2 and A10.

17 HEARING REQUESTS

17.1 The protest time limit is 90 minutes after the last boat finishes the last race of the day or the race committee signals no more racing today, whichever is later. The time will be posted on the official notice board.

17.2 Hearing request forms are available from the Race Office.

17.3 Notices will be posted no later than 30 minutes after the protest time limit to inform competitors of hearings in which they are parties or named as witnesses. Hearings will be held upstairs in the QCYC Club House, beginning at the time posted.

17.4 Breaches of instructions 19, 22, 23 – 27 and 30 will not be grounds for protest by a boat. This changes RRS 60.1 (a).

17.5 Immediately after finishing a boat intending to protest shall, in addition to the requirements of RRS61.1(a), inform the race committee at the finishing line of her intention to protest and the identity of the boat(s) protested against. The protesting boat must receive an acknowledgement from the race committee. This changes RRS 61.

18 SCORING

18.1 Five races are required to be completed to constitute a series.

18.2 (a) When fewer than 6 races have been completed, a boat's series score is the total of her race scores.

(b) When 6 or more races have been completed, a boat's series score is the total of her race scores excluding her worst score.

19 [DP][NP]SAFETY REGULATIONS

19.1 Competitors shall wear personal flotation devices when afloat. Wet suits and dry suits are not personal flotation devices.

19.2 A boat that retires from a race shall notify the race committee at the first reasonable opportunity.

20 REPLACEMENT OF CREW OR EQUIPMENT

20.1 [DP] Substitution of competitors is not allowed without prior written approval of the Organising Authority

20.2 [DP] Substitution of damaged or lost equipment is not allowed unless authorized in writing by the Organising Authority. Requests for substitution shall be made to the committee at the first reasonable opportunity, which may be after the race.

21 EQUIPMENT AND MEASUREMENT CHECKS

21.1 A boat or equipment may be inspected at any time for compliance with the class rules, notice of race and sailing instructions.

22 OFFICIAL VESSELS

22.1 Official vessels will be advised at briefing.

23 [DP][NP] SUPPORT TEAMS

23.1 Except when requested to participate in rescue operations, team leaders, coaches, and other support persons shall stay outside areas where boats are racing and are restricted to a 5 knot speed limit, from the time of the preparatory signal for the first start of a sequence of starts until all boats have finished or the race committee signals a postponement or abandonment of all races. The areas the boats are racing in is defined as the area inside the course and within 100 metres of any mark, lay line, starting line, finishing line or any area where any boat that is racing, is sailing or may sail.

23.2 Attention is drawn to the relevant local council bylaws regarding the wearing of lifejackets and other restrictions.

23.3 All official and support vessels shall always have an engine safety cut out switch (kill cord) attached to the driver while the engine is running, unless prior written exemption has been provided by the Organising Authority.

23.4 Support Vessels must carry a VHF capable of making and receiving transmissions on VHF channel 77.

24 BERTHING

- 24.1** [DP][NP] Boats shall be kept in their allocated berths within the Picton Marina complex unless advised by the Organising Authority.

25 HAUL-OUT RESTRICTIONS

- 25.1** [DP] Boats shall not be hauled out during the event except with and according to the terms of prior written permission of the Organising Authority.

26 DIVING EQUIPMENT AND PLASTIC POOL

- 26.1** [DP] Boats shall not be cleaned below the waterline by any means during the event.

27 PRIZES

- 27.1** The Elliott 5.9 National Championship trophy will be given for first place.

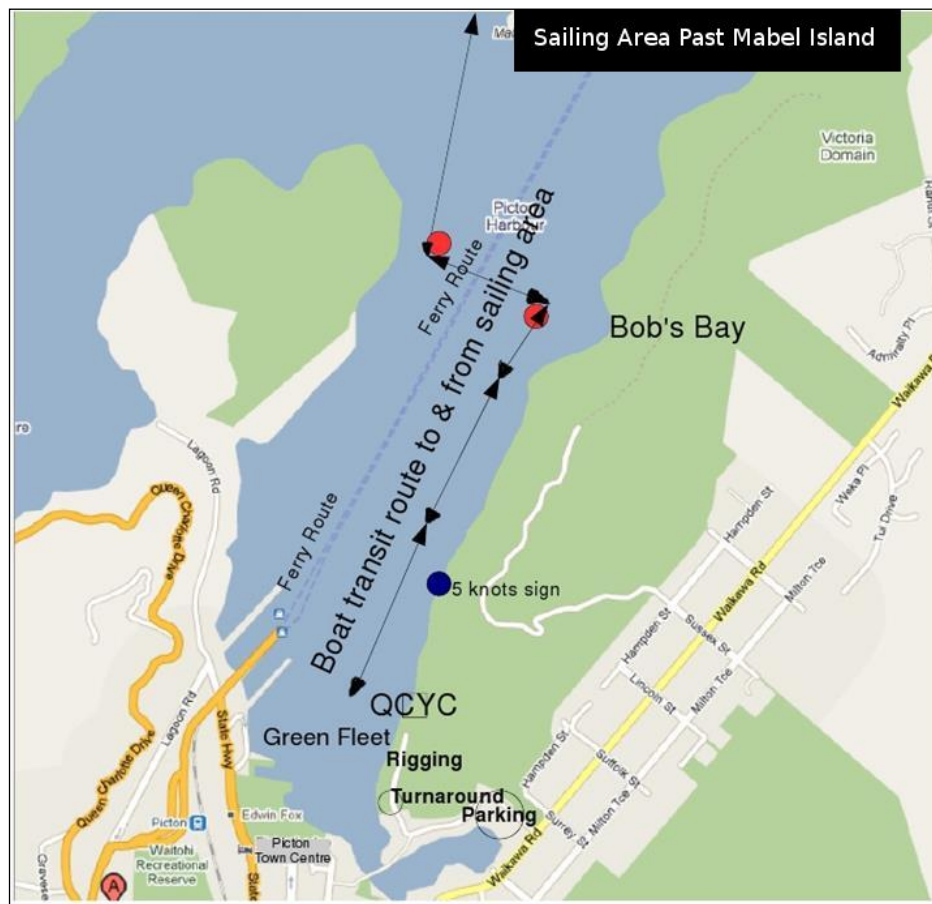
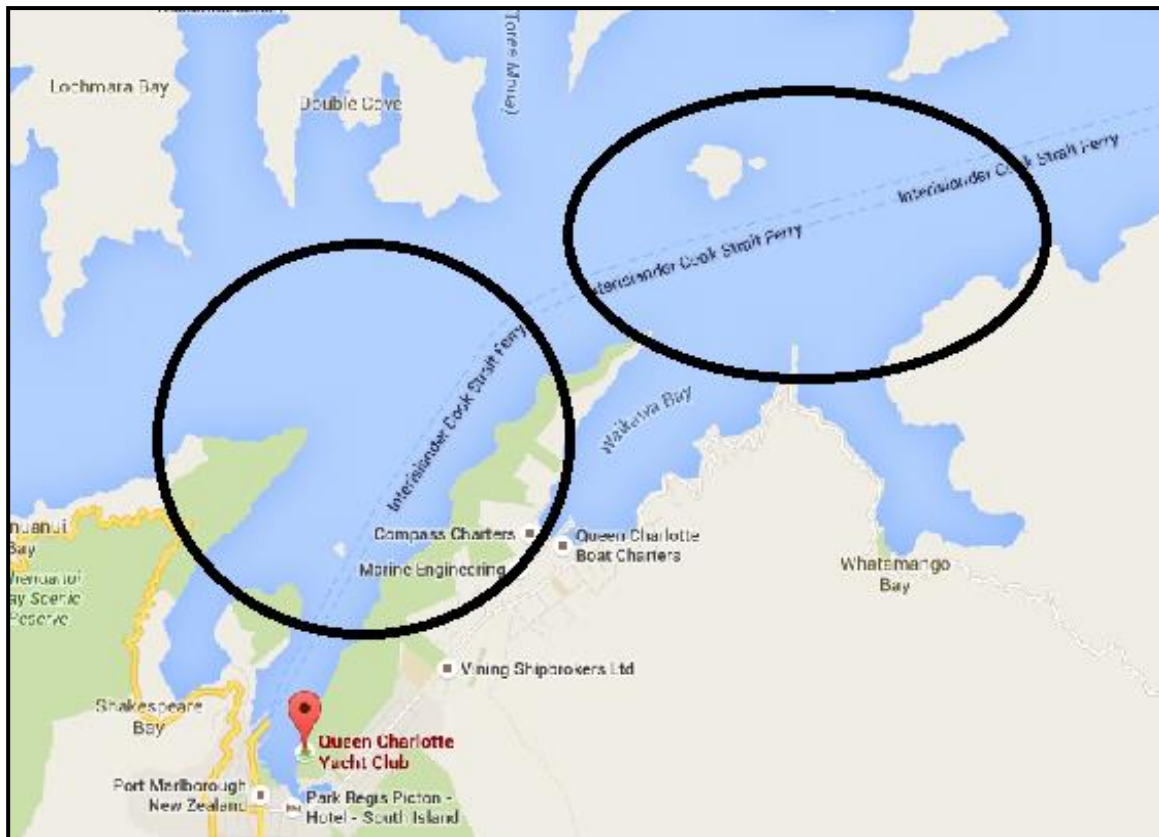
28 RISK STATEMENT

- 28.1** RRS 3 states: 'The responsibility for a boat's decision to participate in a race or to continue to race is hers alone.' By participating in this event each competitor agrees and acknowledges that sailing is a potentially dangerous activity with inherent risks. These risks include strong winds and rough seas, sudden changes in weather, failure of equipment, boat handling errors, poor seamanship by other boats, loss of balance on an unstable platform and fatigue resulting in increased risk of injury. **Inherent in the sport of sailing is the risk of permanent, catastrophic injury or death by drowning, trauma, hypothermia or other causes.**

29 INSURANCE

- 29.1** Each participating boat shall be insured with valid third-party liability insurance with a minimum cover of \$1,000,000.00 per incident or the equivalent. Certificate of insurance is to be presented at registration.

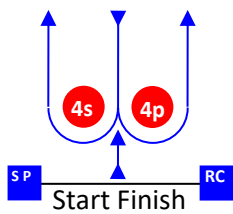
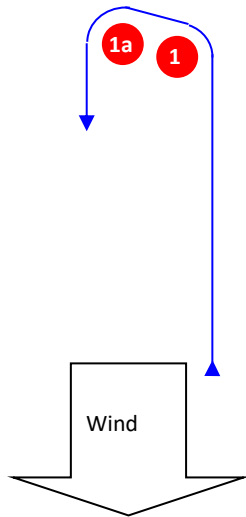
ADDENDUM A - RACING AREA & TRANSIT ROUTE



ADDENDUM B COURSES

Course Illustration – Windward Leeward

LA



Course: Leeward finish

Signal	Mark Rounding Order
1	Start – 1 – 1a - Finish
2	Start – 1 – 1a – 4s/4p – 1 – 1a – Finish

Mark	Description:
1	<i>To be advised</i>
1a	<i>To be advised</i>
4s 4p	<i>To be advised</i>
RC Race Committee Signal Vessel	Ray White , 10m White Aluminium catamaran
SP Starting mark port end	<i>To be advised</i>
FS Finishing mark starboard end	<i>To be advised</i>
	Replacement Marks:
	<i>To be advised</i>