

NOTICE OF RACE



MBBC Double Trouble Mercury Bay, Whitianga 19th and 20th November 2022

The organising authority is: The Mercury Bay Boating Club, Whitianga

1. RULES

1.1 The regatta will be governed by the rules defined in the YNZ Publication “*The Racing Rules of Sailing 2017 - 2020*”. (RRS). YNZ Safety Regulations shall apply

1.2 Any changes to the Rules will be published in the Regatta Sailing Instructions posted on the Notice Board.

1.3 The Yachting New Zealand Safety regulations Part 1 shall apply.

1.4 For protests, an Arbitration Hearing will be offered prior to any formal hearing. (See YNZ Regulation 4.5.5)

2. ELIGIBILITY AND ENTRY

2.1 The regatta is open to all boats of the Hobie 16/Prindle 16 Class Catamarans, Tornado Class Catamarans, A-Class Catamarans and other similar catamarans.

2.2 Skippers should be a member of a club or class affiliated to Yachting New Zealand.

2.3 MBBC encourages junior sailor/son/daughter participation; however, for the Hobie 16 and Tornado classes a minimum crew weight of 135kg will apply for teams to be eligible for scoring/prizes. Let's keep it fair and fun – if you want to sail with your 30kg child you might need to put two of them on board as Zane did at the last Double Trouble.

Entry Fees

Required Fees are as follows:

Boat	Fee
Single handed	\$50
Double handed	\$80

Other:

Commemorative boom and bumper stickers	Included with registration fee
Casual BBQ at the club on Saturday	Info to follow!

Entries will be accepted in advance via an on-line registration form. Click [HERE](#) for the Form. Late entries may be accepted at any time at the discretion of the Race Officer. A late fee of \$20 will apply. The Saturday night social will be defined closer to the event.

3. SCHEDULE OF EVENTS

3.1 All participants are welcome to arrive any time during the week. We have ample areas set aside for your boats to be stored, mast up or down, from mid-week through the weekend.

See **Addendum C** with detail of suggested boat storage locations.

Boat set up and practice race	Fri 18 November	Round the bay fun race, starting no later than 4pm.
Sailor Briefing	Sat 19 November	10.00am
First Warning Signal	Sat 19 November	10.45am
Sailor Briefing	Sun 20 November	9.00am
First Warning Signal	Sun 20 November	9.45am

Back-to-back races will be scheduled on Saturday and Sunday. The fleet may or may not come ashore for lunch. This will be at the discretion of the Race Officer and will be communicated from the committee boat. A maximum of 5 races on Saturday, and 3 on Sunday. No warning signal after 2pm on Sunday.

4. SAILING INSTRUCTIONS

4.1 The Sailing Instructions will be announced verbally at the first morning briefing.

5. PENALTY SYSTEM

5.1 RRS 44.1 is changed so that the Two-Turns Penalty is replaced by the One-Turn Penalty

6. RACING AREA

6.1 The races will be held on the waters of Mercury Bay.

7. COURSES TO BE SAILED

7.1 Windward Leeward, Triangle, and Around the Bay (as a one-off race). Race Officer may utilize 2 top marks for windward-leeward races. **See Addendums A and B.**

8. SCORING

8.1 The "Low Points" scoring of Appendix A.4 will apply. When at least 6 races have been completed, the worst performance will be dropped.

9. Launching

9.1 Unless otherwise directed by the Organizing authority, all competing boats shall be launched and retrieved in front of the Mercury Bay Boating Club or at the alternate launch location (Ohuka Reserve) 150 meters north. **See Addendum C.**

10 Radio Communications

10.1 All competitors are encouraged to carry a VHF radio and monitor Channel 77.

10.2 All competitors are encouraged to download and use the **Race Qs** app to record their race. The entire fleet racing can then be replayed.

11. PRIZES

11.1 For a class of only 3 boats there will be only one prize.

1st, 2nd, 3rd A Class Division (Classic)// 1st, 2nd, 3rd A Class Division (Foiling)

1st, 2nd, 3rd Hobie 16 Division

1st, 2nd, 3rd Tornado Division

There may be an open division, at the discretion of the Race Officer. A variety of spot prizes will also be drawn and awarded.

12. TEAM SUPPORT BOATS shall stay outside areas where boats are racing from the time of the preparatory signal for the first class to start until all boats have finished or retired.

Additional regatta support/safety boats will be permitted and encouraged. Please contact committee.mbbc@gmail.com if you know someone who can bring up a RIB.

13. SOCIAL FUNCTION

M.B.B.C will host a casual BBQ Saturday Evening. Dinner tickets will be available for purchase in advance via a registration link, which will be sent out closer to the event.

14. DISCLAIMER OF LIABILITY

14.1 Competitors participate in the Regatta entirely at their own risk; see Racing Rule 4, Decision to Race. The Organizing Authority will not accept any liability for material damage or personal injury or death sustained in conjunction with, or prior to, or during, or after the regatta.

15. REFUND POLICY

15.1 The organizing authority has every intention of running the Fourth Annual Double Trouble event. However, if the event has to be cancelled due to circumstances beyond our control, the Organising Authority will first attempt to reschedule the event and if that is not feasible, will refund all fees, minus any expenses that we cannot recover.

15. INSURANCE

15.1 The Organising Authority recommends that each boat be insured with valid 3rd party liability insurance.

16. For any questions and further contact please email committee.mbbc@gmail.com

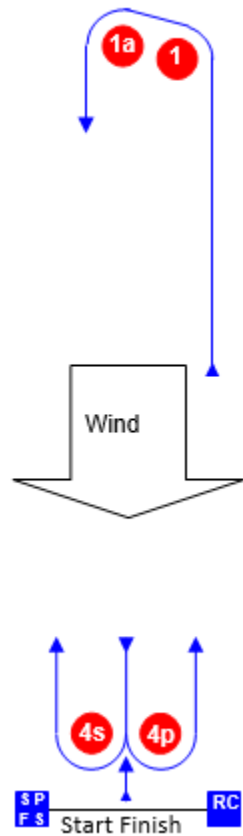


See addendums A through C below --

Addendum A

Course Illustration – Windward Leeward

LA



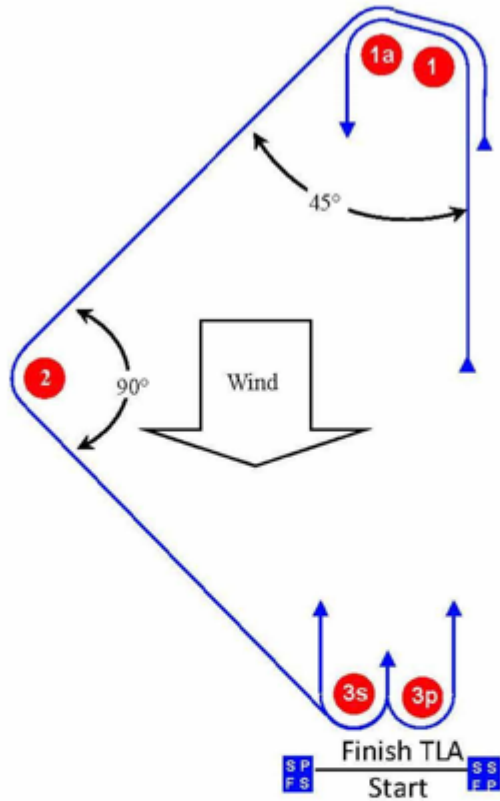
Course: Leeward finish	
Signal	Mark Rounding Order
LA1	Start – 1 – 1a – Finish
LA2	Start – 1 – 1a – 4s/4p – 1 – 1a – Finish
LA3	Start – 1 – 1a – 4s/4p – 1 – 1a – 4s/4p – 1 – 1a – Finish

Mark	Description:
1	Red Cylindrical Buoy
1a	Red Cylindrical Buoy
4s 4p	Red Cylindrical Buoy
RC	Race Committee Signal Vessel <i>Blue and White Tristram 851 hard top launch "Alfresco"</i>
SP	Starting mark port end Orange Spherical Buoy
FS	Finishing mark starboard end Orange Spherical Buoy
	Replacement Marks:
	Orange Cylindrical Buoy

Addendum A1:

Course Illustration – Triangular course with offset

TWA / TLA



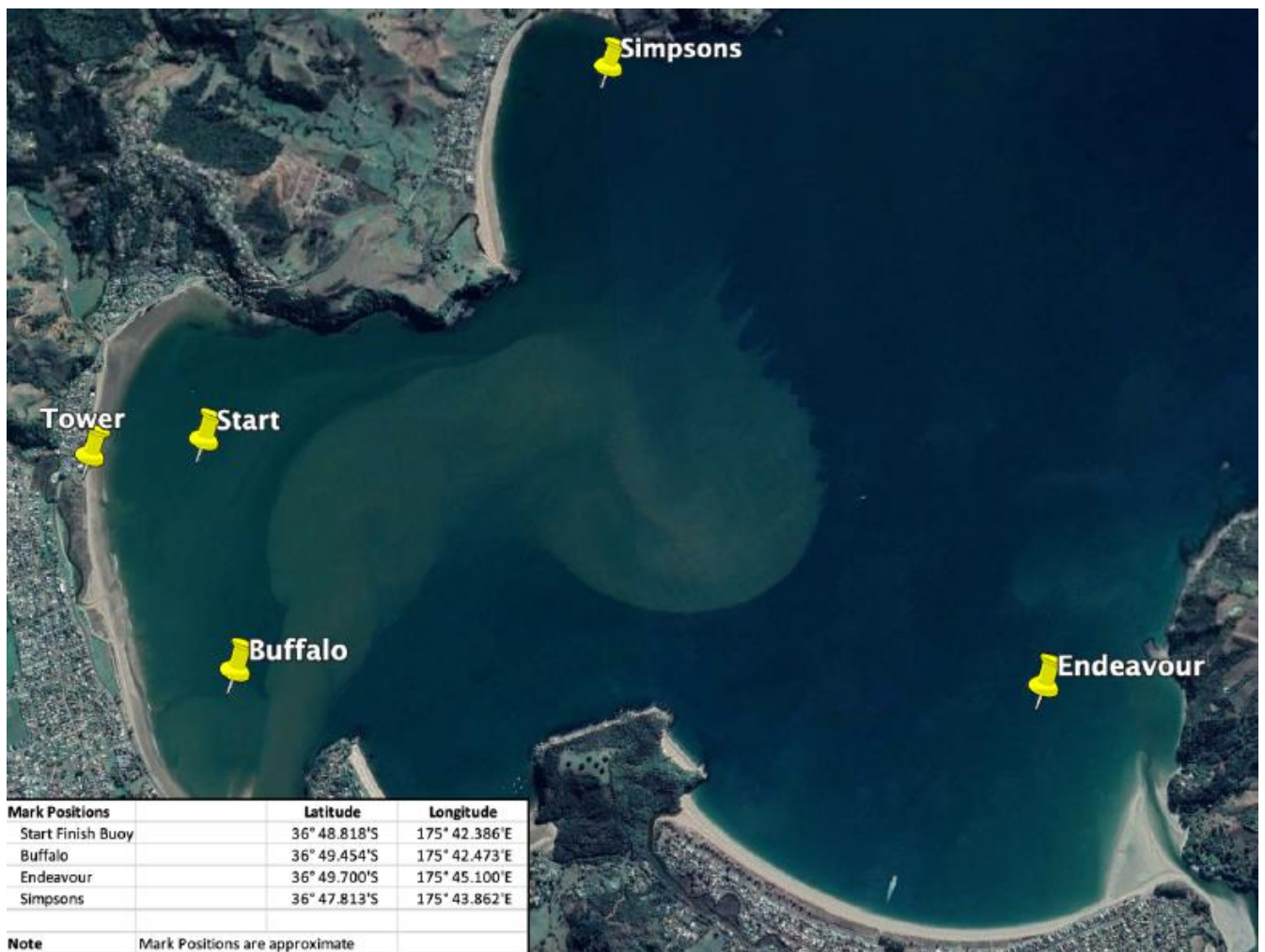
Course: Triangular Downwind Finish

Signal	Mark Rounding Order
TLA2	Start – 1 – 1a – 2 – 3s(port) – 1 – 1a – Finish

TLA3	Start – 1 – 1a – 2 – 3s(port) – 1 – 1a – 3s/3p – 1 – 1a – Finish
------	--

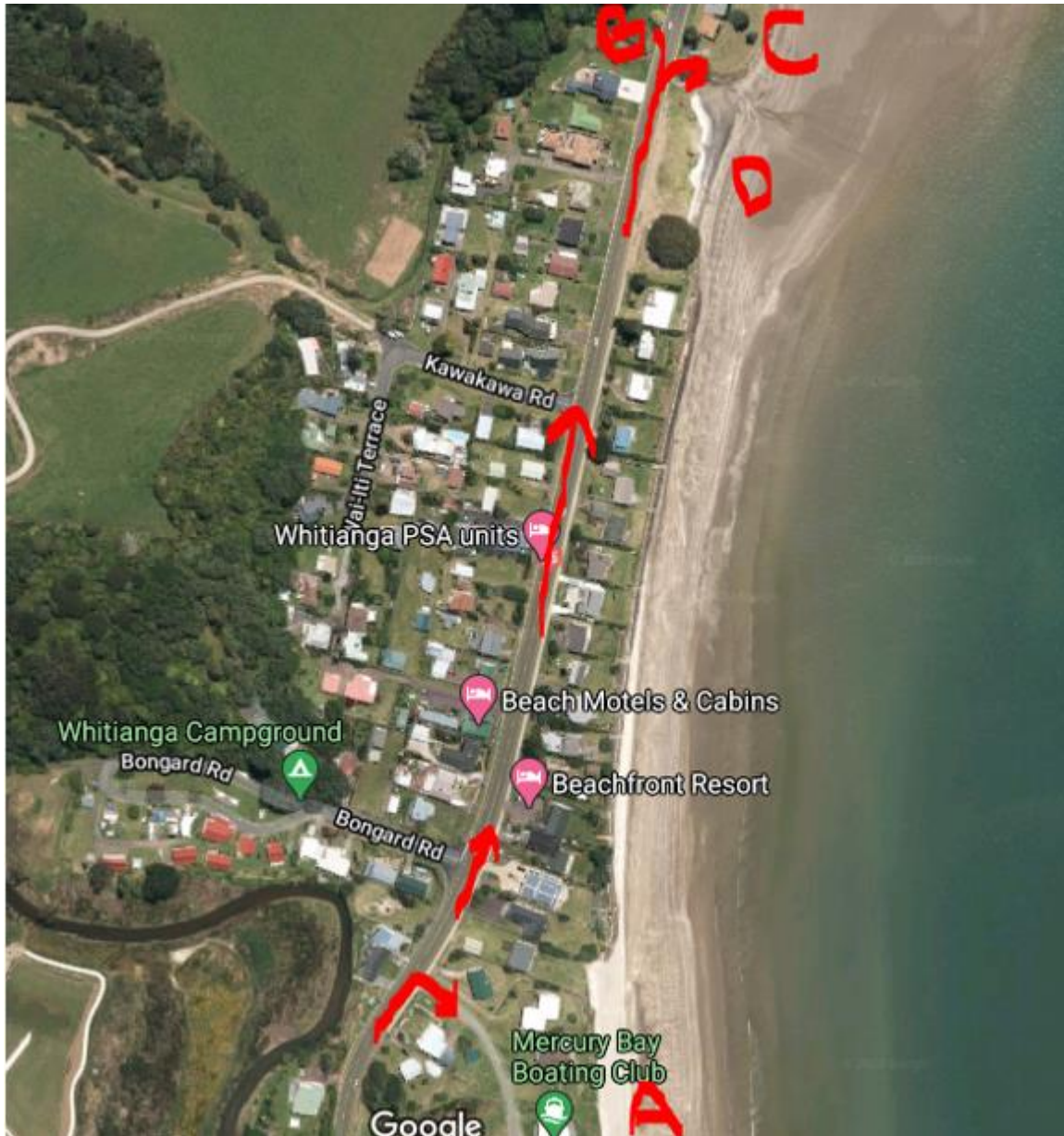
Mark	Description
1	
1a	
2	
3s 3p	
SS	Starting mark starboard end
SP	Starting mark port end

Addendum B: Round the Bay Fixed Marks (Mark order will be chosen on the day).



Addendum C: Location and Boat Spotting (3 helpful snips below)

The address for the Mercury Bay Boating Club is 93 Buffalo Beach Road (See location A). All A-Class boats should plan to stage at the club. Hobie Cats can be positioned at B (152 Buffalo Beach Road) and Tornados can be spotted at C (141 Buffalo Beach Rd). D is the launch retrieve beach for Hobies and Tornados and the A-Class cats as well if swell is too big in front of the club.



Detail of the Boating Club – 93 Buffalo Beach Road



Details of Hobie Spotting area and Tornado/NACRA spotting area as well as all-weather launch beach (141 and 152 Buffalo Beach Road).

