



Aon Youth Programme Coaches Regatta

Saturday 28th to Sunday 29th May 2022

The Organising Authority is Yachting New Zealand, and the event will be hosted by Royal Akarana Yacht Club, 10 Tamaki Drive, Orakei, Auckland 1071

SAILING INSTRUCTIONS (SIs)

1 RULES

- 1.1** The event is governed by the rules as defined in The Racing Rules of Sailing.
- 1.2** Appendix T, Arbitration, will apply.
- 1.3** The Yachting New Zealand Safety Regulation Part 1 will apply.
- 1.4** Decisions of the Protest Committee will be final as provided in RRS 70.5.

2 CHANGES TO SAILING INSTRUCTIONS

- 2.1** Any change to the sailing instructions will be posted before 0900 on the day it will take effect. Except that any change to the schedule of races will be posted by 2000 on the day before it will take effect.

3 COMMUNICATIONS WITH COMPETITORS

- 3.1** Notices to competitors will be posted on the official notice board located at <https://www.yachtingnz.org.nz/nzl-sailing/youth-sailing/aon-youth-programme-coaches-regatta> and the Aon Youth Programme Teamapp.

- 3.2** The race office is located in the Joyce Fisher room at Royal Akarana Yacht Club. Alternatively, via phone: 0273811090, email: sam@yachtingnz.org.nz.

4 CODE OF CONDUCT

- 4.1** [DP] Competitors and support persons shall comply with reasonable requests from race officials.

5 SIGNALS MADE ASHORE

- 5.1 Signals made ashore will be displayed on the flag pole in front of Royal Akarana Yacht Club.
- 5.2 When flag AP is displayed ashore, '1 minute' is replaced with 'not less than 45 minutes' in Race Signals AP.
- 5.3 [DP] Flag D with one sound means 'Boats shall not to leave the shore until this signal is made. The warning signal will not be made before the scheduled time or less than 45 minutes after flag D is displayed.'

6 SCHEDULE

6.1

| Saturday 28 th May 2022 | | |
|------------------------------------|-----------------|------------------------------|
| Class | Number of races | Time of First Warning Signal |
| ILCA 6 | 4 | 1200 |
| 420/470 | 4 | 1205 |
| 29er/ Nacra 15 | 4 | 1210 |
| Windfoil | 4 | 1215 |
| Kitefoil | 4 | 1220 |

| Sunday 29 th May | | |
|-----------------------------|-----------------|------------------------------|
| Class | Number of races | Time of First Warning Signal |
| ILCA 6 | 4 | 0930 |
| 420/470 | 4 | 0935 |
| 29er/Nacra 15 | 4 | 0940 |
| Windfoil | 4 | 0945 |
| Kitefoil | 4 | 0950 |

- 6.2 A competitors briefing will be held at 1030hrs on Saturday 28th May in the Joyce Fisher room at the Royal Akarana Yacht Club.
- 6.3 To alert boats that a race or sequence of races will begin soon, the orange starting line flag will be displayed with one sound at least five minutes before a warning signal is made.
- 6.4 One extra race per day may be sailed, provided that no class becomes more than one race ahead of schedule.
- 6.5 On the last scheduled day of racing no warning signal will be made after 1600.

7 CLASS FLAGS

7.1

| Class | Class Flag |
|----------|--|
| ILCA 6 | Blue with red stardust laser symbol |
| 420 | White with red 420 symbol |
| 470 | White with red 470 symbol |
| 29er | White with red 29er logo |
| Nacra 15 | White with red Nacra symbol |
| Windfoil | Blue with white F symbol |
| Kitefoil | Black with International Kite Race and Foil Symbol |

8 RACING AREA

8.1 SI Addendum A shows the location of the possible racing areas

9 COURSES

9.1 The diagram in SI Addendum B show the courses, including the approximate angles between legs, the order in which marks are to be passed, and the side on which each mark is to be left.

9.2 No later than the warning signal, the race committee signal vessel will display the approximate compass bearing of the first leg.

10 MARKS

10.1 Mark descriptions are as follows:

| Mark | Description |
|---|---------------------------|
| 1 | Red cylinder |
| 1A | Yellow cylinder |
| 2 | Red cylinder |
| 3S/3P | Yellow cylinder |
| 4S/4P | Red cylinder |
| Start – Starboard End | Race committee Vessel |
| Start – Port End | Red truncated cylinder |
| Finish – Starboard End (Outer trap) | Blue Cylinder |
| Finish – Port End (Outer Trap) | Race committee vessel |
| Finish – Starboard End (Windward/Leeward) | Yellow truncated cylinder |
| Finish – Port End (Windward/Leeward) | Race committee vessel |

11 THE START

11.1 The starting line is between a staff displaying an orange flag on the signal vessel at the starboard end and the course side of the port-end starting mark.

11.2 [DP] Boats whose warning signal has not been made shall avoid the starting area during the starting sequence for other races.

11.3 A boat that does not start within four minutes after her starting signal will be scored Did Not Start without a hearing. This changes RRS A5.1 and A5.2.

12 THE FINISH

12.1 For the outer trapezoid finishes the finishing line is between a staff displaying a blue flag on the finish vessel at the port end and the course side of the starboard end finishing mark.

12.2 For the Windward/Leeward finishes the finishing line is between a staff displaying a blue flag on the finish vessel at the starboard end and the course side of the port end finishing mark.

13 PENALTY SYSTEM

13.1 For the 29er, 49erFX and Windfoil classes class(es), RRS 44.1 is changed so that the Two-Turns Penalty is replaced by the One-Turn Penalty

13.2 RRS Appendix P applies.

14 TIME LIMITS [AND TARGET TIMES]

14.1 The Race Time Limit (see RRS 35), Target Time are shown in the table below.

| Class | Target Time | Race Time Limit |
|--------------------|-------------|-----------------|
| 29er/ Nacra 15 | 25 | 45 |
| 420/470 | 30 | 45 |
| Windfoil/ Kitefoil | 15 | 30 |
| ILCA 6 | 30 | 50 |

14.2 Failure to meet the Target Time will not be grounds for redress. This changes RRS 62.1(a).

15 HEARING REQUESTS

15.1 For each class, the protest time limit is 60 minutes after the last boat in that class finishes the last race of the day or the race committee signals no more racing today, whichever is later. The time will be posted on the official notice board.

15.2 Hearing request forms are available at <https://www.yachtingnz.org.nz/nzl-sailing/youth-sailing/aon-youth-programme-coaches-regatta> or in the Joyce Fisher room of Royal Akarana Yacht Club.

15.3 Notices will be posted no later than 30 minutes after the protest time limit to inform competitors of hearings in which they are parties or named as witnesses. Hearings will be held in the protest room, located at Royal Akarana Yacht Club, beginning at the time posted.

16 SCORING

16.1 1 race is required to be completed to constitute a series.

16.2 (a) When fewer than 5 races have been completed, a boat's series score is the total of her race scores.

(b) When 5 or more races have been completed, a boat's series score is the total of her race scores excluding her worst score.

17 [DP] SAFETY REGULATIONS

17.1 [DP] (a) Competitors shall individually check-out before racing online using a phone via [this link](https://www.yachtingnz.org.nz/nzl-sailing/youth-sailing/aon-youth-programme-coaches-regatta), at <https://www.yachtingnz.org.nz/nzl-sailing/youth-sailing/aon-youth-programme-coaches-regatta> or the QR codes located at the Royal Akarana Yacht Club.

(b) Competitors shall individually check-in immediately on returning to shore online by using a phone via [this link](https://www.yachtingnz.org.nz/nzl-sailing/youth-sailing/aon-youth-programme-coaches-regatta), at <https://www.yachtingnz.org.nz/nzl-sailing/youth-sailing/aon-youth-programme-coaches-regatta> or the QR codes located at the Royal Akarana Yacht Club.

17.2 [DP] A boat that retires from a race shall notify the race committee at the first reasonable opportunity.

18 [DP] SUPPORT TEAMS

18.1 All official and support vessels shall always have an engine safety cut out switch (kill cord) attached to the driver while the engine is running.

18.2 Sufficient personal flotation devices for each crew member must be carried or worn in all support vessels at all times in accordance with New Zealand Maritime Law.

19 PRIZES

19.1 Prizes will be given for the winners of each event.

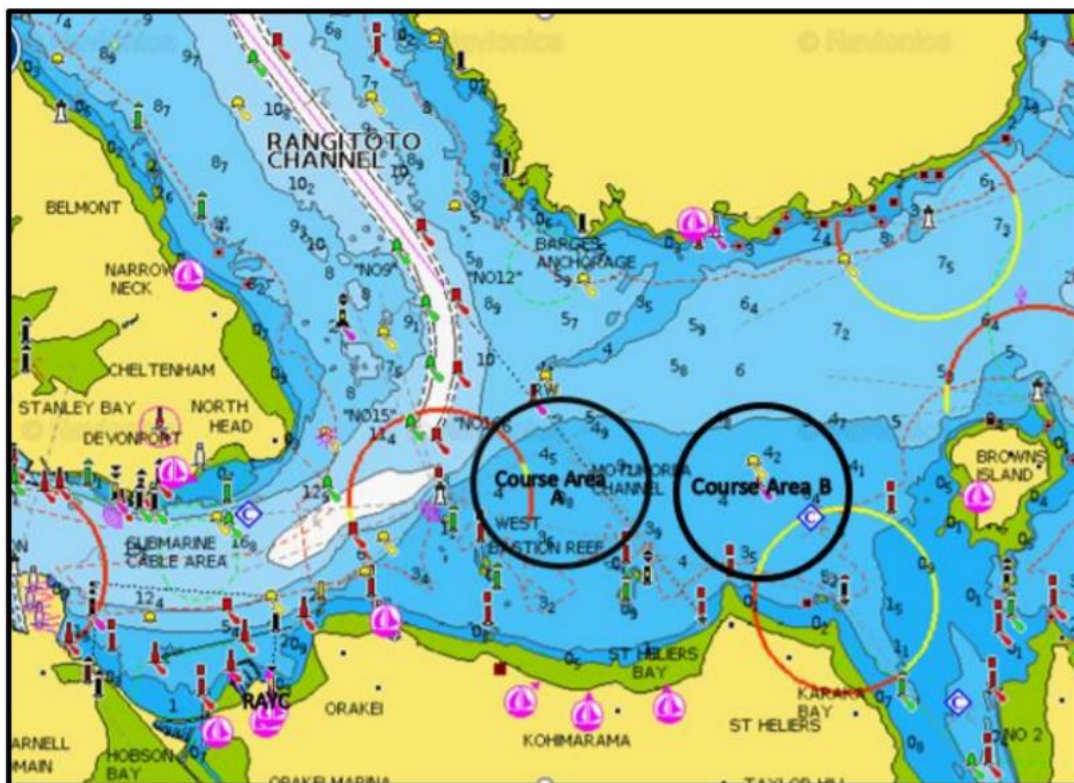
20 RISK STATEMENT

20.1 RRS 3 states: 'The responsibility for a boat's decision to participate in a race or to continue to race is hers alone.' By participating in this event each competitor agrees and acknowledges that sailing is a potentially dangerous activity with inherent risks.

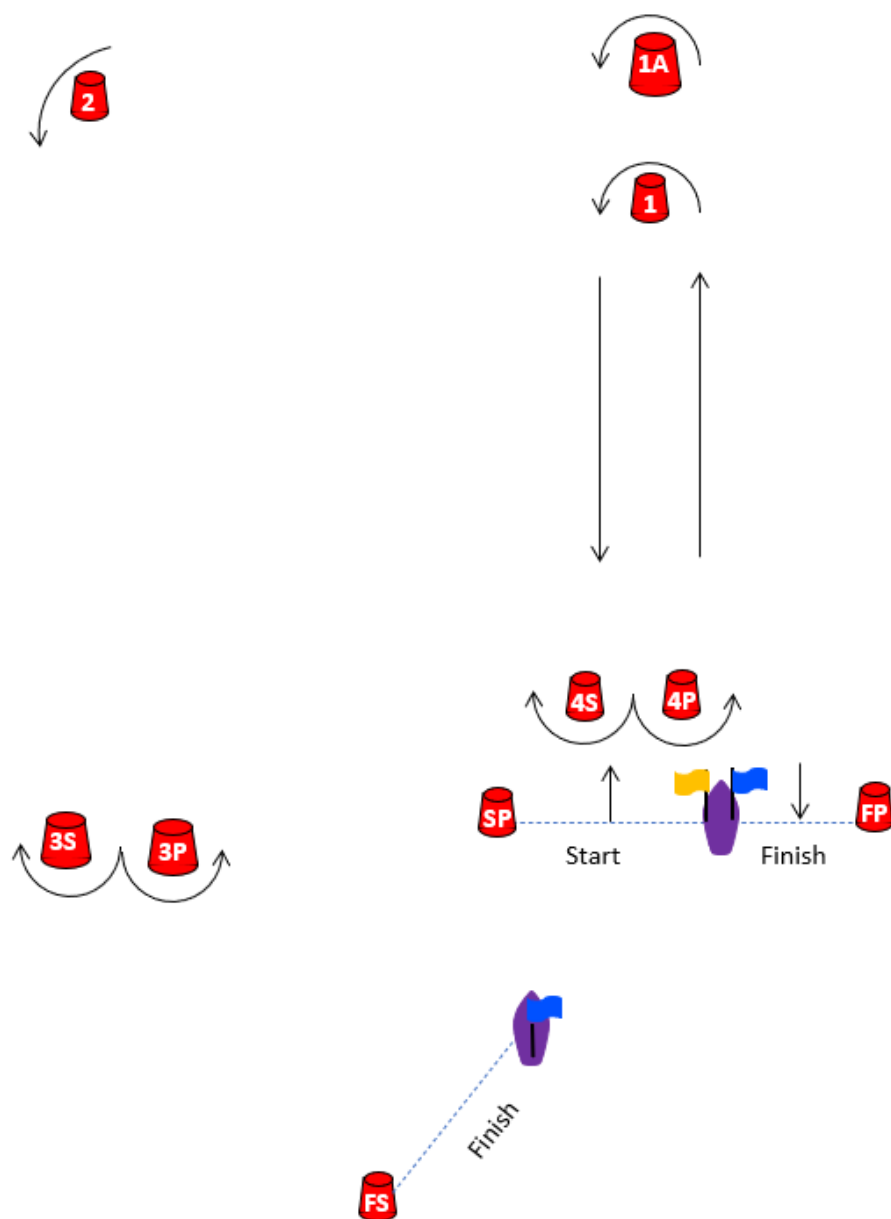
21 INSURANCE

21.1 Each participating boat shall be insured with valid third-party liability insurance with a minimum cover of \$1,000,000 per incident or the equivalent.

Addendum A Racing Areas



Addendum B Courses



| Course | Mark rounding order |
|--|---|
| L2 | Start – 1 – 4S/4P – 1 – Finish |
| L3 | Start – 1 – 4S/4P – 1 – 4S/4P – 1 – Finish |
| LA2 | Start – 1A – 4S/4P – 1A – Finish |
| LA3 | Start – 1A – 4S/4P – 1A – 4S/4P – 1A – Finish |
| O2 | Start -1 – 2 – 3S/3P- 2-3S/3P - Finish |
| O3 | Start 1-2-3S/3P-2-3S/3P-2-3S/3P -Finish |
| Note: Mark 1 may be to windward of Mark 1A | |