



New Zealand Flying 15 National Championship  
and  
World Championship selection trials  
7 – 10<sup>th</sup> of April 2022

*The Organising Authority is Royal Akarana Yacht Club*

*8-10 Tamaki Drive*

*Okahu Bay, Auckland 1071*

[rayc@rayc.co.nz](mailto:rayc@rayc.co.nz)

**SAILING INSTRUCTIONS (SIs)**

The notation '[NP]' in a rule of the sailing instructions (SIs) means that a boat may not protest another boat for breaking that rule. This changes RRS 60.1(a).

**1 RULES**

- 1.1** The event is governed by the rules as defined in The Racing Rules of Sailing.
- 1.2** The Yachting New Zealand Safety Regulations Part 1 shall apply.
- 1.3** Appendix T, *Arbitration*, will apply.
- 1.4** [NP] Boats shall at all times observe the Auckland Council Navigation Safety bylaws in particular Part 8, 55. A Moving Prohibited zone:

*A moving prohibited zone extending to 100m astern and 100m to each side of a large vessel, and continued at such width to 500m ahead, following the line of the buoyed channel when changing course, is reserved around a large vessel, when that large vessel is underway within the pilotage areas of Auckland Harbour.*

*When navigating within a marked channel, the moving prohibited zone to the side of the vessel is reduced to the width of the marked channel and the zone ahead of the vessel shall follow the line of the marked channel."*

*The owner or person in charge of a vessel must not navigate the vessel within the moving prohibited Zone of a large vessel, within the pilotage areas of Auckland (excluding Tamaki River) and Manukau.*

*For the purpose of this clause, a tug and barge is considered a composite unit."*

- 1.5** International Flying Fifteen class rule B 14.5 is changed as follows: All boats shall carry VHF radios on board.

- 1.6** If there is conflict between the Notice of Race and these Sailing Instructions the Sailing Instructions shall prevail.

## **2 CHANGES TO SAILING INSTRUCTIONS**

- 2.1** Any change to the sailing instructions will be posted before 0800 on the day it will take effect, except that any change to the schedule of races will be posted by 1900 on the day before it will take effect.

## **3 COMMUNICATIONS WITH COMPETITORS**

- 3.1** Notices to competitors will be posted on the official notice board located at <https://rayc.co.nz/flying15/> and on the notice board on the ground floor of the Hyundai Marine Sports Centre.
- 3.2** The race office is located at ground floor of the Hyundai Marine Sports Centre. Email [rayc@rayc.co.nz](mailto:rayc@rayc.co.nz)
- 3.3** On the water, the race committee intends to monitor and communicate with competitors on VHF radio channel 17.
- 3.4** [DP] From the first warning signal until the end of the last race of the day], except in an emergency, a boat shall not make voice or data transmissions and shall not receive voice or data communication that is not available to all boats.

## **4 CODE OF CONDUCT**

- 4.1** [DP] Competitors and support persons shall comply with reasonable requests from race officials.

## **5 SIGNALS MADE ASHORE**

- 5.1** Signals made ashore will be displayed on a flag pole between the Hyundai Marine Sports Centre and the main boat ramp.
- 5.2** When flag AP is displayed ashore, '1 minute' is replaced with 'not less than 90 minutes' in Race Signals AP.
- 5.3** [DP] Flag D with one sound means 'Boats shall not leave the shore until this signal is made. The warning signal will not be made before the scheduled time or less than 90 minutes after flag D is displayed.'

## 6 SCHEDULE OF RACES

### 6.1 Schedule of Racing:

Day/Date:	Class:	Class Flag:	No of Races:	Time of First Warning Signal:
8 April 2022	Flying 15	Flying 15	Up to 4	1055
9 April 2022	Flying 15	Flying 15	Up to 4	1055
10 April 2022	Flying 15	Flying 15	Up to 4	1055

6.2 To alert boats that a race or sequence of races will begin soon, the orange starting line flag will be displayed with one sound at least 1 minute before a warning signal is made.

6.3 On the last scheduled day of racing no warning signal will be made after 1530.

## 7 CLASS FLAGS

7.1 The Flying Fifteen Class flag is a white flag with blue insignia.

## 8 RACING AREA

8.1 SI Addendum A shows the location of the racing area.

## 9 COURSES

9.1 The diagram in SI Addendum B shows the course(s), including the approximate angles between legs, the order in which marks are to be passed, and the side on which each mark is to be left.

9.2 No later than the warning signal, the race committee signal vessel will display the approximate compass bearing of the first leg.

## 10 MARKS

10.1 Mark descriptions are shown in Addendum B - courses

10.2 In the event that a gate mark is missing and has not been replaced with an object displaying flag M, the remaining mark shall be rounded to port.

## **11 THE START**

**11.1** Races will be started using RRS 26.

**11.2** The starting line is between a staff displaying an orange flag on the signal vessel at the starboard end and the course side of the port-end starting mark.

**11.3** If any part of a boat's hull is on the course side of the starting line at her starting signal and she is identified, the race committee will attempt to Broadcast her name and/or sail number on VHF channel 17 Failure to a make a broadcast, failure of her to hear such a broadcast, or the order in which boats are broadcast will not be grounds for a request for redress. This changes RRS 62.1(a).

**11.4** A boat that does not start within 4 minutes after her starting signal will be scored Did Not Start without a hearing. This changes RRS A5.1 and A5.2.

## **12 CHANGE OF THE NEXT LEG OF THE COURSE**

**12.1** Any change to the next leg of the course will be changed in accordance to RSS 33. When mark 1 has been replaced the new mark 1 (black cube) will be set and the old Mark 1 will be removed as soon as practicable. This changes RSS 33.

## **13 THE FINISH**

**13.1** The finishing line is between a staff displaying a blue flag on the signal vessel at the port end and the course side of the starboard end finishing mark.

## **14 PENALTY SYSTEM**

**14.1** RRS 44.1 is changed so that the Two-Turns Penalty is replaced by a One-Turn Penalty

## **15 TIME LIMITS AND TARGET TIMES]**

**15.1** The Race Time Limit (see RRS 35), Target Time and the Finishing Window are shown in the table below.

Class	Target Time	Race Time Limit	Finishing Window
Flying Fifteen	45 Minutes	60 Minutes	15 Minutes

**15.2** The Finishing Window is the time for boats to finish after the first boat sails the course and finishes. Boats failing to finish within the Finishing Window, and not subsequently retiring, penalized or given redress, will be scored Time Limit Expired (TLE) without a hearing. A boat scored TLE shall be scored points for the finishing place one more than the points scored by the last boat that finished within the Finishing Window. However,

when 2 or more boats fail to finish within the finishing window they will be scored as if they were tied. This changes RRS 35, A5.1, A5.2 and A10.

**15.3** Failure to meet the Target Time will not be grounds for redress. This changes RRS 62.1(a).

## **16 Protests and requests for redress.**

**16.1** The protest time limit is *90* minutes after the last boat finishes the last race of the day or the race committee signals no more racing today, whichever is later. The time will be posted on the official notice board.

**16.2** Protest forms are available from the race office at Hyundai Marine Sports Centre.

**16.3** Notices will be posted no later than 30 minutes after the protest time limit to inform competitors of schedule of hearings in which they are parties to or named as witnesses. Hearings will be held in the protest room, located at New Navigators Room. The Protest Committee may commence Protest Hearings if the parties are available before the end of the notice period.

**16.4** Immediately after finishing a boat intending to protest shall, in addition to the requirements of RRS61.1(a), inform the Race Committee at the finishing line of her intention to protest and the identity of the boat(s) protested against. The protesting boat must receive an acknowledgement from the Race Committee. This changes RRS 61.

## **17 SCORING**

**17.1** The scoring system will be the low points system in accordance with Appendix A4.

**17.2** 5 races are required to be completed to constitute a series.

**17.3** (a) When fewer than 6 races have been completed, a boat's series score is the total of her race scores.

(b) When from 6 to 9 races have been completed, a boat's series score is the total of her race scores excluding her worst score.

**17.4** Rule A5.3 applies.

## **18 [DP] SAFETY REGULATIONS**

### **18.1** Check-out and check-in ashore

(a) Competitors shall individually check-out before racing by personally signing check out sheets located on the tractor.

(b) Competitors shall individually check-in immediately on returning to shore after racing by personally signing check-in sheets located on the tractor.

**18.2** A boat that retires from a race shall notify the race committee at the first reasonable opportunity.

## **19 REPLACEMENT OF CREW OR EQUIPMENT**

**19.1** Substitution of competitors is not allowed without prior written approval of the race committee.

**19.2** Substitution of damaged or lost equipment is not allowed unless authorized in writing by the race committee. Requests for substitution shall be made to the committee at the first reasonable opportunity, which may be after the race.

## **20 EQUIPMENT AND MEASUREMENT CHECKS**

**20.1** A boat or equipment may be inspected at any time for compliance with the class rules, notice of race and sailing instructions.

## **21 OFFICIAL VESSELS**

**21.1** Official vessels will be identified as follows: RAYC Burgee.

## **22 [DP] SUPPORT TEAMS**

**22.1** Except when requested to participate in rescue operations, team leaders, coaches, and other support persons shall stay outside areas where boats are racing and are restricted to a 5 knot speed limit, from the time of the preparatory signal for the first start of a sequence of starts until all boats have finished or the race committee signals a postponement or abandonment of all races. The areas the boats are racing in is defined as the area inside the course and within 100 metres of any mark, lay line, starting line, finishing line or any area where any boat that is racing, is sailing or may sail.

**22.2** All official and support vessels shall always have an engine safety cut out switch (kill cord) attached to the driver while the engine is running, unless prior written exemption has been provided by the Organising Authority.

## 23 BERTHING

23.1 Boats shall be kept in their assigned places while in the boat park.

## 24 PRIZES

24.1 Prizes will be given as follows:

2022 New Zealand National Championship:

WILKIN-ANDERSON HALF MODEL National Champion (Half model)

AIR NEW ZEALAND PLATE 2<sup>nd</sup> overall (Engraved salver)

TE WHARAU TROPHY 3<sup>rd</sup> overall (Wooden waka)

TAURANGA CLASSIC TROPHY Champion Classic boat (Unmodified pre-Sniffer (3079) hull moulds)

TAURANGA TROPHY Champion Silver boat (Pre 3500 sail numbers)

LEATHAM EDMOND MEMORIAL TROPHY First male/female crew (Presented by Anne Edmond)

FLYING FIFTEEN TROPHY First all-female crew (Cup)

SPENCER SALVER First Helm over 55 years (Helm not in first 3 places, presented by Martyn Spencer)

PINKIE'S POT Top Fleet (Average Points for Fleet)

IMPROVERS TROPHY Improvement during regatta (Presented by Rowell Winters)

TRUSTBANK HANDICAP CUP Handicap winner (Time corrected handicap scores)

CRADDOCK CUP Improvement from previous year (Points difference between Nationals)

SAM MASON MEMORIAL TROPHY Winner Invitation Race (for Race 1) (Sanders Cup Miniature)

## 25 RISK STATEMENT

25.1 RRS 3 states: 'The responsibility for a boat's decision to participate in a race or to continue to race is hers alone.' By participating in this event each competitor agrees and acknowledges that sailing is a potentially dangerous activity with inherent risks. These risks include strong winds and rough seas, sudden changes in weather, failure of equipment, boat handling errors, poor seamanship by other boats, loss of balance on an unstable platform and fatigue resulting in increased risk of injury. **Inherent in the sport of sailing is the risk of permanent, catastrophic injury or death by drowning, trauma, hypothermia or other causes.**

## 25 INSURANCE

26.1 Each participating boat shall be insured with valid third-party liability insurance with a minimum cover of \$1,000,000 per incident or the equivalent.

## **27 RIGHTS TO USE NAME AND LIKENESS**

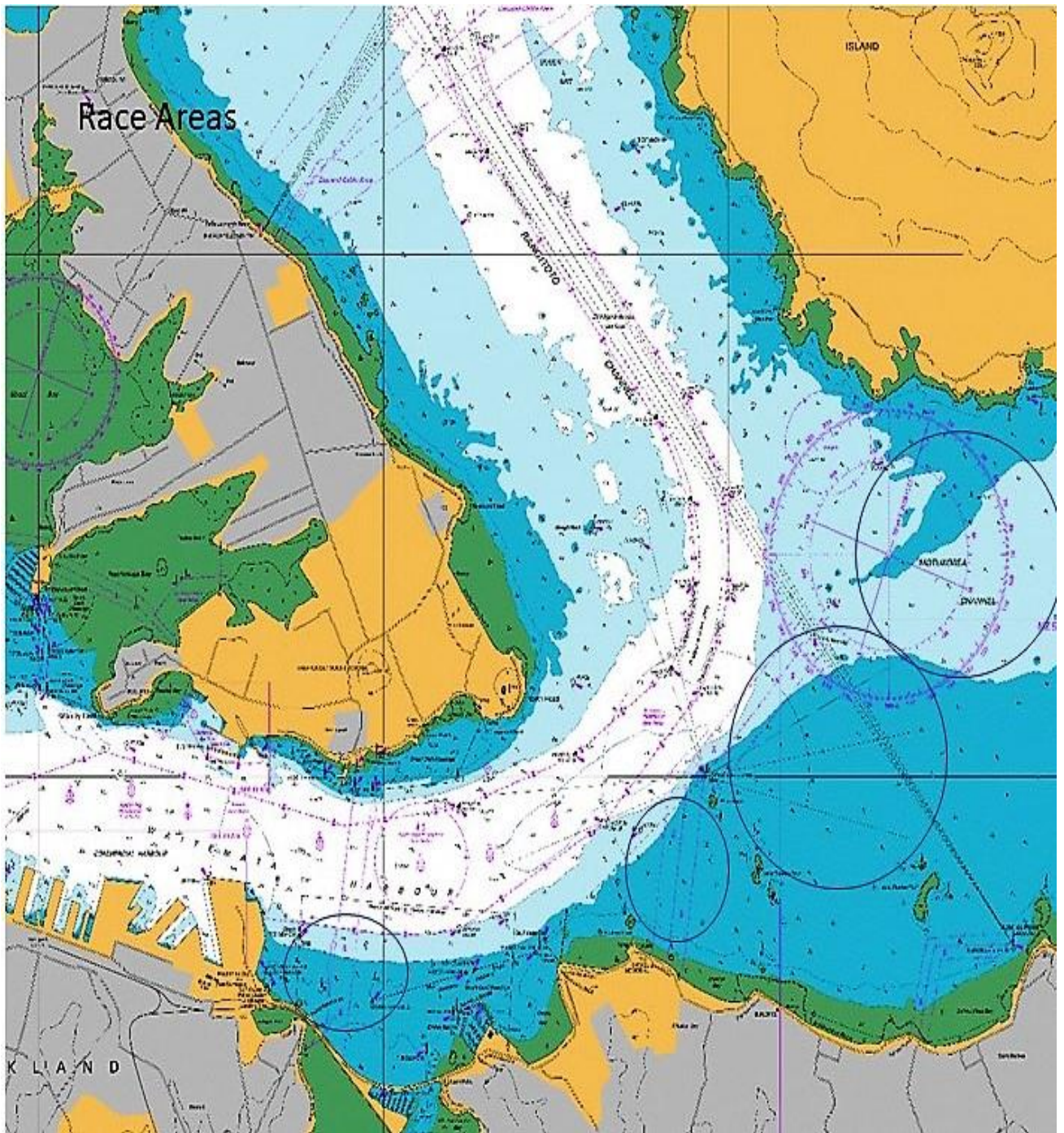
**27.1** By participating in the event, a competitor automatically grants to the Organising Authority and the sponsors of the event, the right in perpetuity, to make, use and show, from time to time and at the discretion, any motion pictures, still pictures and live, taped or film television and other reproductions of him/her during the period of the competition for said event in which the competitor participated and in all material related to the said event without compensation.

## **28 USE OF DRONE FOR MEDIA**

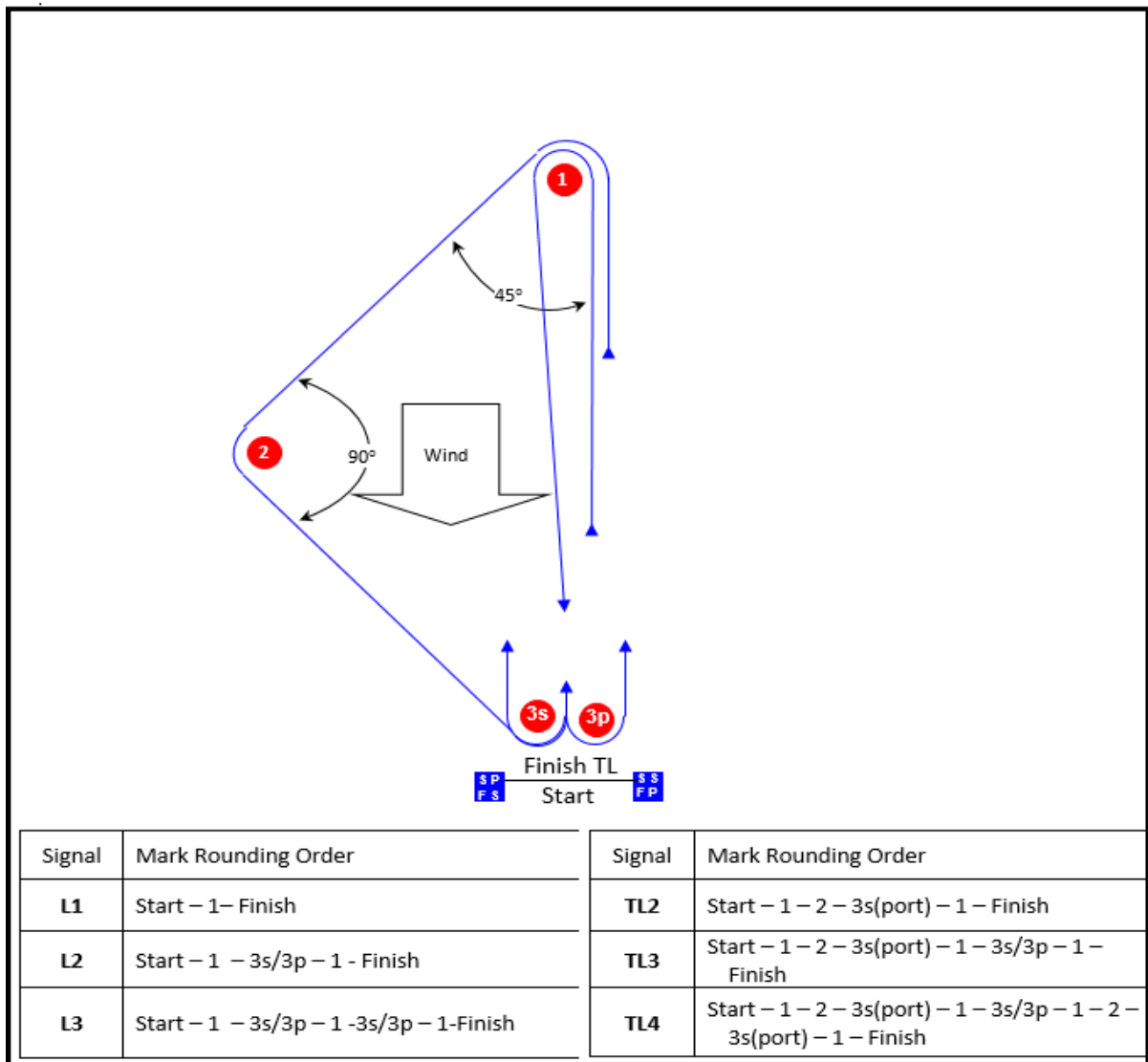
**28.1** All those who take part in the regatta as competitors, support crew or spectators agree to be overflowed by a drone during the duration of the event, this includes your person and your property (boats).



**Addendum A Racing Areas**



**Addendum B Courses**



Mark	Description
1 2	Orange cube
3s 3p	Orange triangle
SS Starting mark starboard end	Patrol boat displaying an RAYC burgee
SP Starting mark port end	Orange Spherical
FP Finishing mark starboard end	Orange Spherical
FP Finishing mark port end	Patrol boat displaying an RAYC burgee
Replacement mark	Black cube