



2022 New Zealand A Class National Championship, 2022 New Zealand Tornado National Championship and The Harbour Race Cup

Thursday 10th March – Sunday 13th March 2022

The Organising Authority is Howick Sailing Club, Howick Beach, Auckland



SAILING INSTRUCTIONS (SI)

Version 1.02

ABBREVIATIONS

- [DP] Rules for which the penalties for breaching may be less than disqualification and at the discretion of the Protest Committee. Scoring abbreviation is DPI.
- [NP] Rules that are not grounds for protest by a boat. This changes RRS 60.1(a), *Right to Protest; Right to Request Redress or Rule 69 Misconduct*.

SI 1 RULES

- SI 1.1 The regatta will be governed by the 'rules' as defined in the Racing Rules of Sailing (RRS).
- SI 1.2 The Yachting New Zealand Safety Regulations Part 1 shall apply. [DP]
- SI 1.3 The A Class and Tornado Class Rules will apply for the appropriate class. [DP]
- SI 1.4 Appendix T, *Arbitration*, will apply.
- SI 1.5 The Tornado Class is exempt from displaying a protest flag. This changes RRS 61.1(a).

SI 2 CHANGES TO SAILING INSTRUCTIONS

- SI 2.1 Any change to the Sailing Instructions will be posted before 0900 hours on the day it will take effect, except that any change to the schedule of races will be posted by 2000 hours on the day before it will take effect.

SI 3 COMMUNICATIONS WITH COMPETITORS

- SI 3.1 Notices to competitors will be posted on the official notice board. The location of the Race Office and official notice board is at the Howick Sailing Club (HSC) Clubhouse.
- SI 3.2 The online notice board is located at the Howick Sailing Club website – howicksailingclub.co.nz.

SI 4 CODE OF CONDUCT

- SI 4.1 Competitors and support persons shall comply with reasonable requests from race officials. [DP]

SI 5 SIGNALS MADE ASHORE

- SI 5.1 Signals made ashore will be displayed on a flagpole adjacent to the Waterwise kiosk building (west side of HSC Clubhouse).

- SI 5.2 When flag AP is displayed ashore, '1 minute' is replaced with 'not less than 30 minutes' in race signal, AP.
- SI 5.3 A boat shall not leave the shore until flag D is displayed with one sound. The warning signal will not be made before the schedule time or less than **30 minutes** after flag D is displayed. [NP][DP]

SI 6 SCHEDULE OF RACES

- SI 6.1 The **Harbour Race Cup** will be sailed separately from the **2022 New Zealand A Class National Championship** and **2022 New Zealand Tornado National Championship**.

- SI 6.2 Briefing will be held adjacent to the HSC Clubhouse. Sailors briefing will be scheduled as follows:

Harbour Race Cup – 1230hrs Thursday 10th March 2022.

2022 NZ A Class National Championship and **2022 NZ Tornado National Championship** - 1130hrs Friday 11th March 2022 (combined for both classes)

A support boat briefing will be held directly after each sailors briefing.

- SI 6.3 Schedule of racing:

Date	Class	Class Flag	Number of Races	Time of First Warning Signal
Harbour Race Cup				
Thursday 10 th March	A	A-Class emblem on White Background	1 race	1400 hrs (combined start)
	Tornado	Tornado emblem on White Background		
2022 NZ A Class National Championship and 2022 NZ Tornado National Championship				
Friday 11 th March	A	A-Class emblem on White Background	3 races	1300 hrs Immediately after A-Class start
	Tornado	Tornado emblem on White Background		
Saturday 12 th March	A		4 races	1130 hrs Immediately after A-Class start
	Tornado			
Sunday 13 th March	A		3 races	1130 hrs Immediately after A-Class start
	Tornado			

- SI 6.4 Two extra races per day may be sailed, provided that no class becomes more than two races ahead of schedule and the change is made according to SI 2.
- SI 6.5 To alert boats that a race or sequence of races will begin soon, the orange flag defining the starboard end of the starting line will be displayed with one sound signal at least five minutes before a warning signal is made.
- SI 6.6 On the last scheduled day of racing no warning signal will be made after 1500hrs.

SI 7 THE COURSES

- SI 7.1 The diagram in Addendum A show the courses for the **Harbour Race Cup**, the order in which marks are to be passed and the side on which each mark is to be left. The Harbour Race Cup will use fixed harbour markers and a gate as marks of the course.
- SI 7.2 The diagram in Addendum B show the courses for the **2022 NZ A Class National Championship** and **2022 NZ Tornado National Championship**, including the approximate angles between the legs, the order in which marks are to be passed and the side on which each mark is to be left.

SI 8 MARKS

- SI 8.1 A list of the marks that will be used, including a description of each one, will be included in Addendum A and Addendum B.

SI 9 THE START

- SI 9.1 The starting line will be between a staff displaying an orange flag on the Race Committee vessel at the starboard end and the course side of the port-end starting mark.
- SI 9.2 Boats whose warning signal has not been made shall avoid the starting area during the starting sequence for other races. [DP][NP]
- SI 9.3 A boat that does not start within four (4) minutes after her starting signal will be scored Did Not Start. This changes RRS A5.1 and A5.2.

SI 10 CHANGE OF THE NEXT LEG OF THE COURSE

- SI 10.1 To change the next leg of the course, the Race Committee will lay a new mark (or move the finishing line) and remove the original mark as soon as practicable. When in a subsequent change a new mark is replaced, it will be replaced by an original mark.
- SI 10.2 The Race Committee may designate a Race Committee vessel displaying flag L to lead the first boat to the new mark.



SI 11 THE FINISH

- SI 11.1 For the **Harbour Race Cup**, the finishing line will be between a staff displaying a BLUE flag on the starboard-end and the course side of the port-end finishing mark displaying an ORANGE flag.
- SI 11.2 For the **2022 NZ A Class National Championship** and **2022 NZ Tornado National Championship**, the finishing line will be between a staff displaying a blue flag on the Race Committee vessel at the port-end and the course side of the starboard-end finishing mark.

SI 12 PENALTY SYSTEM

- SI 12.1 RRS 44.1 is changed so that the Two-Turns Penalty is replaced by the One-Turn Penalty for both classes.

SI 13 TIME LIMITS AND TARGET TIMES

- SI 13.1 The Race Time Limit (see RRS 35), Target Time and the Finishing Window are shown in the table below:

Target Time	Time Limit	Finishing Window	Mark 1 Time Limit
Harbour Race Cup			
150 minutes	210 minutes	40 minutes	-
2022 NZ A Class National Championship and 2022 NZ Tornado National Championship			
40 minutes	55 minutes	15 minutes	30 minutes

- SI 13.2 If no boat has passed Mark 1 within the Mark 1 Time Limit, the race will be abandoned. Failure to meet the Target Time or the Mark 1 Time Limit will not be grounds for redress. This changes RRS 62.1(a), *Redress*.
A Mark 1 Time Limit does not apply for the **Harbour Race Cup**.
- SI 13.3 Boats failing to finish within the Finishing Window after the first boat sails the course and finishes within the race time limit, will be scored Did Not Finish without a hearing. This changes RRS 35, *Time Limit and Scores* and RRS A4, *Low Point System* and RRS A5.1, A5.2, *Scores Determined by the Race Committee*.

SI 14 HEARING REQUESTS

- SI 14.1 Hearing Request forms are available at the Race Office at the HSC Clubhouse.
- SI 14.2 For each class, the protest time limit is 60 minutes after the last boat in that class has finished in the last race of the day or the Race Committee signals no more racing today, whichever is later. Protest time limits will be posted on the official notice board.

- SI 14.3 Notices will be posted no later than 30 minutes after the protest time limit to inform competitors of hearings in which they are parties or named as witnesses. Hearings will be held in the Protest Room. The Protest Room location will be defined on the official notice board.
- SI 14.4 Notices of protests by the Race Committee, Technical Committee or Protest Committee will be posted to inform boats under RRS 61.1(b), *Informing the Protestee*.
- SI 14.5 Penalties for breaches of Class Rules and Safety Regulations may be less than disqualification if the Protest Committee so decides.

SI 15 SCORING

- SI 15.1 The Low Points Scoring System of Appendix A will apply.
- SI 15.2 (a) When fewer than six races have been completed, a boat's series score will be the total of her race scores.
(b) When six or more races have been completed, a boat's series score will be the total of her race scores excluding her worst score

SI 16 SAFETY REGULATIONS [DP] [NP]

- SI 16.1 Boats not leaving the shore for a scheduled race shall promptly notify the race office.
- SI 16.2 Check-out and check-in ashore:
- a) Competitors shall individually check-out before racing by personally signing the check-out sheets located next to the main ramp in front of the Coastguard building.
 - b) Competitors shall individually check-in immediately on returning to shore after racing, no later than the protest time limit by signing the check-in sheets located next to the main ramp in front of the Coastguard building.
- SI 16.3 A boat retiring from racing shall notify the Race Committee before leaving the racing area, or if that is not possible, shall notify the Race Office as soon as possible after returning ashore.
- SI 16.4 Competitors who require assistance shall blow a whistle or wave one arm. The Race Committee reserves the right to assist competitors who in their opinion require assistance, regardless of the wishes of the competitor. This will not be grounds for redress. This changes RRS 62.1(a), *Redress*.
- SI 16.5 RRS 27.1, *Other Race Committee Actions Before The Starting Signal*, and RRS 40, *Personal Flotation Devices*, are changed to require that personal flotation devices shall be worn at all times while afloat, except briefly while changing or adjusting clothing or personal equipment. Wet suits and dry suits are not personal flotation devices. Code flag Y will not be displayed.

SI 17 REPLACEMENT OF CREW OR EQUIPMENT [DP]


- SI 17.1 Substitution of competitors in the A-Class will not be allowed. Substitution of competitors in the Tornado Class is not allowed without prior written approval of the Race Committee.
- SI 17.2 Substitution of damaged or lost equipment will not be allowed unless authorised by the Race Committee. Requests for substitution shall be made to the Race Committee at the first reasonable opportunity, which may be after the race.

SI 18 EQUIPMENT AND MEASUREMENT CHECKS

- SI 18.1 A boat or equipment may be inspected at any time for compliance with the Class Rules, Notice of Race and Sailing Instructions.
- SI 18.2 When instructed by a race official on the water, a boat shall proceed to a designated area for inspection. [DP]

SI 19 SUPPORT BOATS [DP] [NP]

- SI 19.1 Support boats shall register with the Organizing Authority. All support boats must complete the registration sheet at the support/safety boat briefing and be contactable on VHF radio.
- SI 19.2 Support/safety boat briefing will be held adjacent to the HSC Clubhouse directly after the Sailors briefing on Thursday 10th March for the **Harbour Race Cup** and Friday 11th March for the **2022 NZ A Class National Championship** and **2022 NZ Tornado National Championship**.

- SI 19.3 Except when requested to participate in rescue operations, team leaders, coaches, and other support persons shall stay outside areas where boats are racing and are restricted to a 5 knot speed limit, from the time of the preparatory signal for the first start of a sequence of starts until all boats have finished or the Race Committee signals a postponement or abandonment of all races. The areas the boats are racing in is defined as the area inside the course and within 50 metres of any mark, lay line, starting line, finishing line or any area where any boat that is racing is sailing or may sail.
- SI 19.4 Attention is drawn the relevant local council bylaws regarding wearing of lifejackets and other restrictions.
- SI 19.5 When a support boat has a sole capable occupant the outboard kill cord shall be attached to the driver.
- SI 19.6 When a Race Committee or Protest Committee member indicates a support boat to move further from the course area, the mentioned boat shall do so immediately.
- SI 19.7 The Race Committee may instruct one or more support boats to maintain station in areas which are in variation of SI 19.3. For the **Harbour Race Cup**, the Race Committee will advise all support boats what areas they require support boats to station.
- SI 19.8 When flag V (with a long sound signal) is displayed on a committee boat all support boats are requested to remain afloat and assist all sailors. 
- SI 19.9 The Race Committee or the Protest Committee may protest any boat whose support boat is in breach of SI 19. Penalties imposed as a result of a protest under this rule will result in a penalty being imposed on the boat(s) supported by the support boat.

SI 20 RUBBISH DISPOSAL [DP] [NP]

- SI 20.1 Rubbish may be placed aboard support and Race Committee boats.

SI 21 LAUNCHING AND RETRIEVAL RESTRICTIONS [DP] [NP]

- SI 21.1 All boats will be required to launch and retrieve from Howick Beach.

SI 22 RADIO COMMUNICATION [DP][NP]

- SI 22.1 Except in an emergency, a boat that is racing shall not make voice or data transmissions and shall not receive voice or data communication that is not available to all boats. This restriction also applies to mobile telephones.
- SI 22.2 Race Management/support boat communications will be on VHF channel "77".

SI 23 PRIZES

- SI 23.1 Prizes will be awarded as detailed in the Notices of Race.

SI 24 RISK STATEMENT

- SI 24.1 Competitors participate in the regatta entirely at their own risk. RRS 3, Decision to Race, states: "The responsibility for a boat's decision to participate in a race or to continue racing is hers alone."

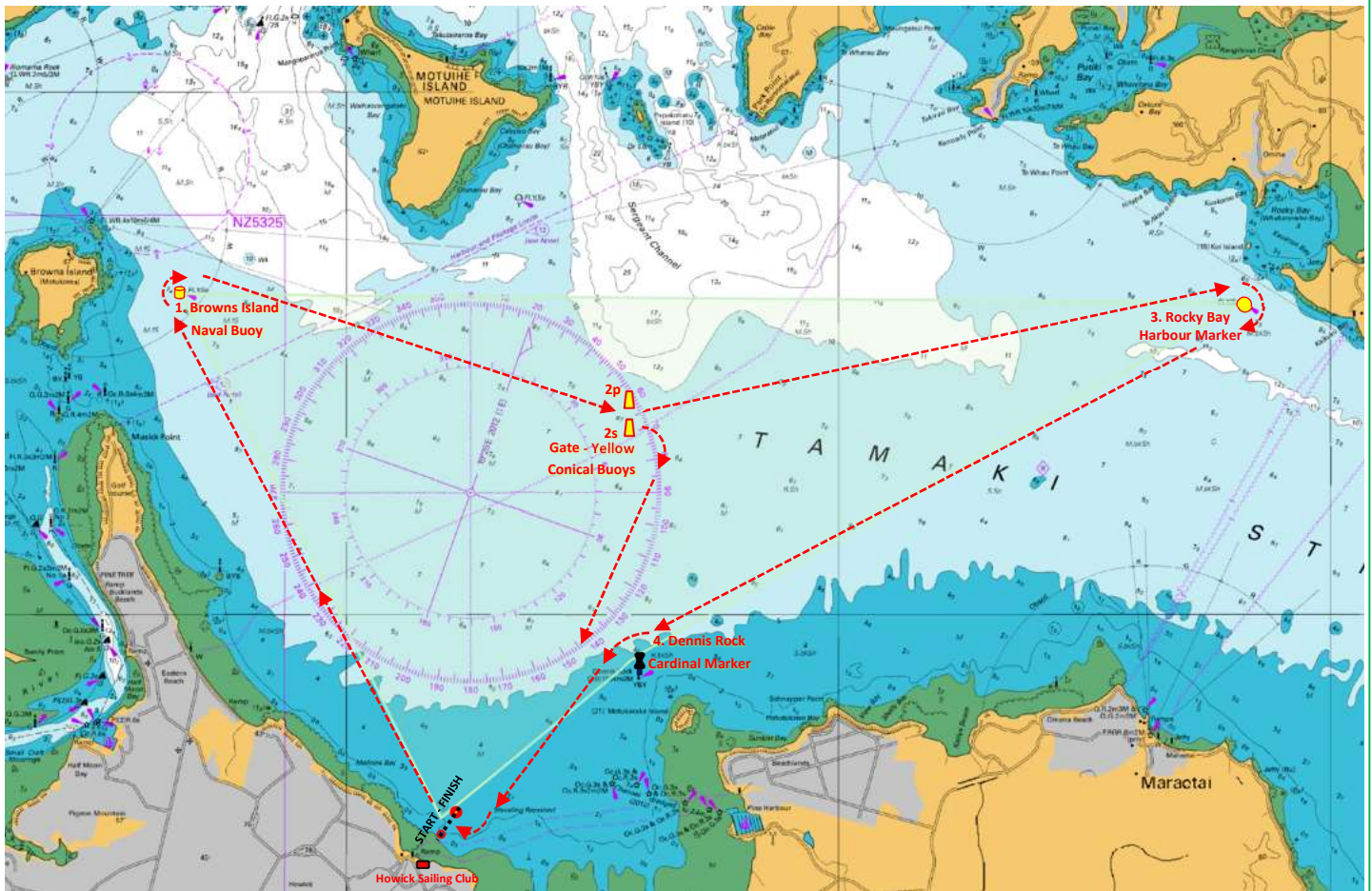
Sailing is by its nature an unpredictable sport and therefore inherently involves an element of risk. By participating in the event, each competitor and the responsible adult agrees and acknowledges that:

- (a) They are aware of the inherent element of risk involved in the sport and accept responsibility for the exposure of themselves and their boat to such inherent risk whilst taking part in the event;
- (b) They are responsible for the safety of themselves, their boat and their other property whether afloat or ashore;
- (c) They accept responsibility for any injury, damage or loss to the extent caused by their own actions or omission;
- (d) Their boat is in good order, equipped to sail in the event and they are fit to participate;
- (e) The provision of a race management team, patrol vessels and other officials and volunteers by the event organiser does not relieve them of their own responsibilities;
- (f) The provision of patrol vessel cover is limited to such assistance, particularly in extreme weather conditions, as can be practically provided in the circumstances.

Addendum A: Harbour Race Cup - Course

2022 A-Class & Tornado Auckland Harbour Race Cup

10th March 2022



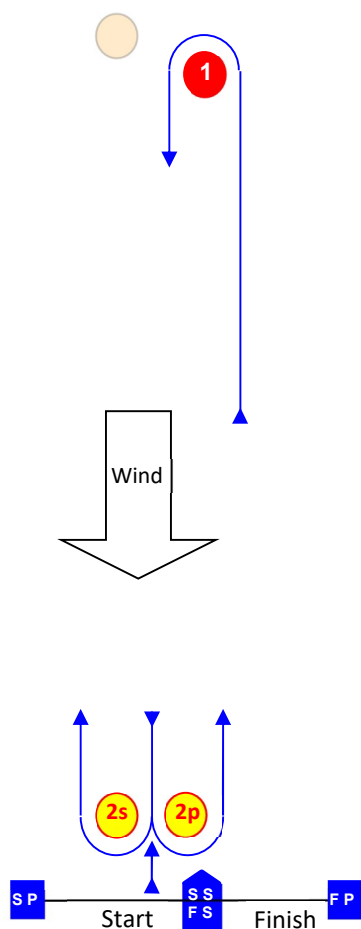
Course: Harbour Race Cup

Signal	Mark Rounding Order
1	Start – 1 Browns Island Navy buoy (starboard) – 2s/2p Yellow conical gate – 4 Dennis Rock Cardinal Marker (port) – Finish
2	Start – 1 Browns Island Navy buoy (starboard) – 2s/2p Yellow conical gate – 3 Rocky Bay Harbour Marker – 4 Dennis Rock Cardinal Mark (port) – Finish

Mark:	Description:
Mark 1 – Browns Island Navy Buoy	Yellow Fixed Cylinder buoy
Gate 2s / 2p	Yellow conical buoys
Mark 3 – Rocky Bay Harbour Marker	Yellow Fixed Sphere buoy
Mark 4 – Dennis Rock Cardinal Marker	Black West Cardinal Marker
Starting mark starboard end	Committee boat
Starting mark port end	Orange teardrop buoy with an ORANGE flag
Finishing mark starboard end	Orange teardrop buoy with a BLUE flag
Finishing mark port end	Orange teardrop buoy with an ORANGE flag
Replacement mark	Orange conical buoy

Addendum B: 2022 NZ A Class and Tornado Nationals - Course

L

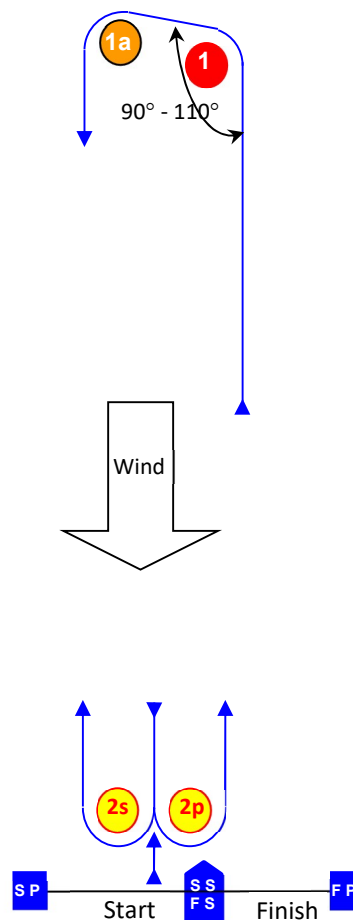


A Class

Course: Leeward finish

Signal	Mark Rounding Order
L2	Start – 1 – 2s/2p – 1 – Finish
L3	Start – 1 – 2s/2p – 1 – 2s/2p – 1 – Finish
L4	Start – 1 – 2s/2p – 1 – 2s/2p – 1 – 2s/2p – 1 – Finish

LA



Tornado Class

Course: Leeward finish

Signal	Mark Rounding Order
LA2	Start – 1 – 1a – 2s/2p – 1 – 1a – Finish
LA3	Start – 1 – 1a – 2s/2p – 1 – 1a – 2s/2p – 1 – 1a – Finish
LA4	Start – 1 – 1a – 2s/2p – 1 – 1a – 2s/2p – 1 – 1a – 2s/2p – 1 – 1a – Finish

Mark	Description
1	Red Yamaha cylinder buoy
1a	Orange teardrop buoy
2s 2p	Yellow cylinder buoys
SS	Starting mark starboard end Committee boat
SP	Starting mark port end Orange teardrop buoy with an ORANGE flag
FS	Finishing mark starboard end Committee boat
FP	Finishing mark port end Orange teardrop buoy with a BLUE flag
Orange circle	Replacement mark Orange conical buoy