

2022 New Zealand Finn Class National Championships

28th February 2022 – 3rd March 2022

Organising Authority

Royal Akarana Yacht Club - 8-10 Tamaki Drive - Okahu Bay, Auckland 1071

In association with the New Zealand Finn Class Association

SAILING INSTRUCTIONS (SIs)

1 RULES

- 1.1 The event is governed by the rules as defined in The Racing Rules of Sailing.
- 1.2 The Yachting New Zealand Safety Regulations Part One Shall apply
- 1.3 The International Finn Class (IFA) event manual, available at <https://www.finnclass.org/technical/rules> will apply.
- 1.4 Boats shall at all times observe the Auckland Council Navigation Safety bylaws in particular Part 8, 55. A Moving prohibited zone.
 - (1) "A moving prohibited zone extending to 100m astern and 100m to each side of a large vessel, and continued at such width to 500m ahead, following the line of the buoyed channel when changing course, is reserved around a large vessel, when that large vessel is underway within the pilotage areas of Auckland (excluding Tamaki River) and Manukau.
 - (2) "When navigating within a marked channel, the moving prohibited zone to the side of the vessel is reduced to the width of the marked channel and the zone ahead of the vessel shall follow the line of the marked channel."
 - (3) The owner or person in charge of a vessel must not navigate the vessel within the moving prohibited Zone of a large vessel, within the pilotage areas of Auckland (excluding Tamaki River) and Manukau. (4) For the purpose of this clause, a tug and barge is considered a composite unit.
- 1.5 Appendix T, *Arbitration*, will apply.

2 CHANGES TO SAILING INSTRUCTIONS

- 2.1 Any change to the sailing instructions will be posted before 0900 on the day it will take effect, except that any change to the schedule of races will be posted by 1800 on the day before it will take effect.

3 COMMUNICATIONS WITH COMPETITORS

- 3.1 Notices to competitors will be posted on the official notice board located at www.rayc.co.nz/finn and at the official notice board of the Royal Akarana Yacht Club
- 3.2 The race office is located at *Royal Akarana Yacht Club (RAYC), 8-10 Tamaki Drive, Okahu Bay, 021892004, suellen@rayc.co.nz*

4 CODE OF CONDUCT

4.1 Competitors and support persons shall comply with reasonable requests from race officials.

5 SIGNALS MADE ASHORE

5.1 Signals made ashore will be displayed at the flag pole in front of the club

5.2 When flag AP is displayed ashore, '1 minute' is replaced with 'not less than 60 minutes' in Race Signals AP.

5.3 Flag D with one sound means 'Boats shall not leave the shore until this signal is made. The warning signal will not be made before the scheduled time or less than 60 minutes after flag D is displayed.'

6 SCHEDULE OF RACES

6.1

<i>Day/Date</i>	<i>Class</i>	<i>Number of races</i>	<i>Time of First Warning Signal</i>
<i>1st March 2022</i>	<i>Finn</i>	<i>3</i>	<i>1200hrs</i>
<i>2nd March 2022</i>	<i>Finn</i>	<i>3</i>	<i>1200hrs</i>
<i>3rd March 2022</i>	<i>Finn</i>	<i>3</i>	<i>1200hrs</i>

6.2 One extra race per day may be sailed, provided that regatta does not become more than one race ahead of schedule and the change is made according to SI 2.1.

6.3 To alert boats that a race or sequence of races will begin soon, the orange starting line flag will be displayed with one sound at least five minutes before a warning signal is made.

7 CLASS FLAGS

7.1 The Finn Class flag is 2 black waves on white background.

8 RACING AREA

8.1 Addendum A shows the location of the racing area.

9 COURSES

9.1 The diagram in SI Addendum B shows the course, including the approximate angles between legs, the order in which marks are to be passed, and the side on which each mark is to be left. The approximate course length is 3 km.

9.2 No later than the warning signal, the race committee signal vessel will display the approximate compass bearing of the first leg.

10 MARKS

10.1 Mark descriptions are shown in Addendum B - courses

10.2 In the event that a gate mark is missing and has not been replaced with an object displaying flag M, the remaining mark shall be rounded to port.

11 OBSTRUCTIONS

11.1 "Fairway Marks" Yachts shall not pass between the shore and Tamaki beacon, Torpedo Bay Marker, permanently moored boats and the wave-break, or between Bean Rock reef black mark and Bean Rock

12 THE START

12.1 The starting line is between a staff displaying an orange flag on the signal vessel at the starboard end and the course side of the port-end starting mark.

12.1 A boat that does not start within five minutes after her starting signal will be scored Did Not Start without a hearing. This changes RRS A5.1 and A5.2.

13 CHANGE OF THE NEXT LEG OF THE COURSE

13.1 To change the next leg of the course, the race committee will move the original mark or the finishing line to a new position.

14 THE FINISH

14.1 The finishing line is between a staff displaying a blue flag on the finishing mark at the starboard end and the course side of the port end finishing mark

15 PENALTY SYSTEM

15.1 RRS 44.1 is changed so that the Two-Turns Penalty is replaced by the One-Turn Penalty

16 TIME LIMITS [AND TARGET TIMES]

16.1 The Race Time Limit, Target Time and the Finishing Window are shown in the table below.

Class	Target Time	Race Time Limit	Finishing Window
Finn	45minutes	75minutes	15 minutes

16.2 Failure to meet the Target Time will not be grounds for redress. This changes RRS 62.1(a).

17 HEARING REQUESTS

17.1 The protest time limit is 60 minutes after the last boat finishes the last race of the day or the race committee signals no more racing today, whichever is later. The time will be posted on the official notice board.

17.2 Hearing request forms are available from the race office at RAYC

17.3 Notices will be posted no later than 30 minutes after the protest time limit to inform competitors of hearings in which they are parties or named as witnesses. Hearings will be held in the protest room, located at RAYC at a time to be notified to competitors involved.

17.4 A list of boats that have been penalized for breaking RRS 42 under Appendix P will be posted.

18 SCORING

18.1 Five races are required to be completed to constitute a series.

18.2 (a) When fewer than five races have been completed, a boat's series score is the total of her race scores.

(b) When from five to nine races have been completed, a boat's series score is the total of her race scores excluding her worst score.

19 SAFETY REGULATIONS

19.1 Each boat shall "sign on" and "sign off" for each day's racing on a sheet to be found on a table beside the official notice board upstairs at RAYC.

19.2 A boat that retires from a race shall notify the race committee at the first reasonable opportunity.

20 REPLACEMENT OF CREW OR EQUIPMENT

20.1 Substitution of damaged or lost equipment is not allowed unless authorized in writing by the Race Committee. Requests for substitution shall be made to the committee at the first reasonable opportunity, which may be after the race.

21 EQUIPMENT AND MEASUREMENT CHECKS

21.1 A boat or equipment may be inspected at any time for compliance with the class rules, notice of race and sailing instructions.

21.2 When instructed by a race official on the water, a boat shall proceed to a designated area for inspection.

22 OFFICIAL VESSELS

22.1 Official vessels will be identified by showing the RAYC burgee

23 [DP][NP] SUPPORT TEAMS

23.1 Except when requested to participate in rescue operations, team leaders, coaches, and other support persons shall stay outside areas where boats are racing and are restricted to a 5 knot speed limit, from the time of the preparatory signal for the first start of a sequence of starts until all boats have finished or the race committee signals a postponement or abandonment of all races. The areas the boats are racing in is defined as the area inside the course and within 100 metres of any mark, lay line, starting line, finishing line or any area where any boat that is racing is sailing or may sail.

23.2 Attention is drawn to the relevant local council bylaws regarding the wearing of lifejackets and other restrictions.

23.3 Support person vessels shall be identified with the competitors sail number.

23.4 All official and support vessels shall always have an engine safety cut out switch (kill cord) attached to the driver while the engine is running, unless prior written exemption has been provided by the Organising Authority.

24 BERTHING

24.1 Boats shall be kept in their assigned places while in the boat park.

27 PRIZES

27.1 Prizes will be given for.

1 st Place	New Zealand National Finn Class Championships
2 nd Place	New Zealand National Finn Class Championships
3 rd Place	New Zealand National Finn Class Championships
1 st	Master
1 st	Grand Master
1 st	Great Grand Master
1 st	Legend
1 st	Junior
1 st	Handicap

28 RISK STATEMENT

28.1 RRS 3 states: 'The responsibility for a boat's decision to participate in a race or to continue to race is hers alone.' By participating in this event each competitor agrees and acknowledges that sailing is a potentially dangerous activity with inherent risks. These risks include strong winds and rough seas, sudden changes in weather, failure of equipment, boat handling errors, poor seamanship by other boats, loss of balance on an unstable platform and fatigue resulting in increased risk of injury. **Inherent in the sport of sailing is the risk of permanent, catastrophic injury or death by drowning, trauma, hypothermia or other causes.**

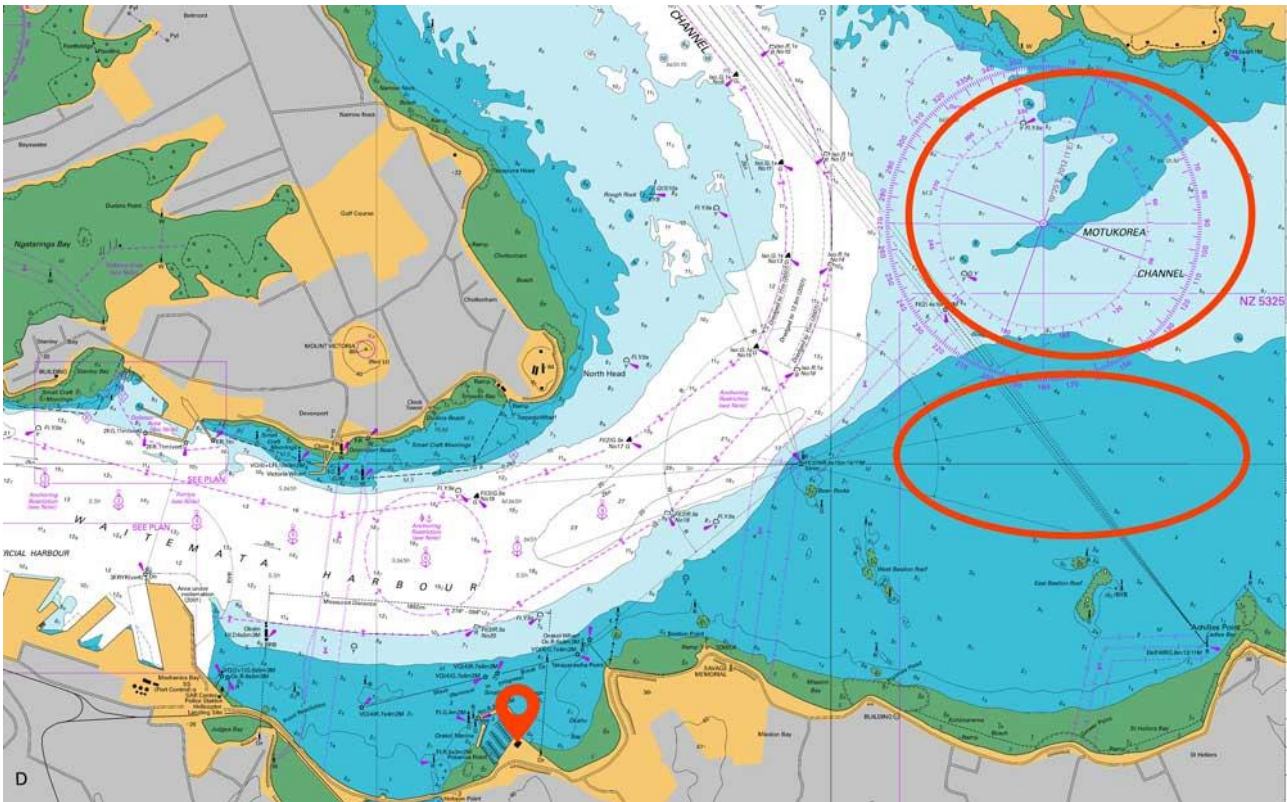
29 INSURANCE

29.1 Each participating boat shall be insured with valid third-party liability insurance with a minimum cover of \$1,000,000 per incident or the equivalent.

Addendum A Racing Areas

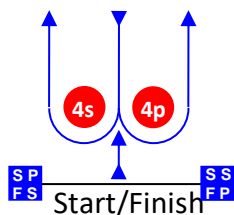
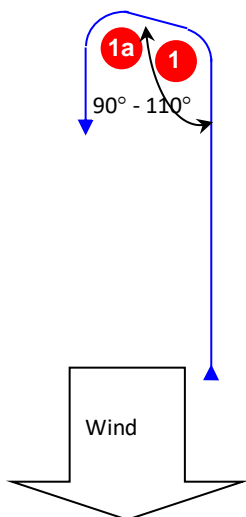
Racing Area

The racing area will be the inner Waitemata Harbour, in an area approximately described as stretching from Rough Rock, Bean Rock, St Heliers Beach.



Course Illustrations – Windward Leeward with offset

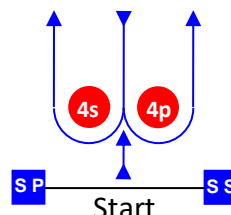
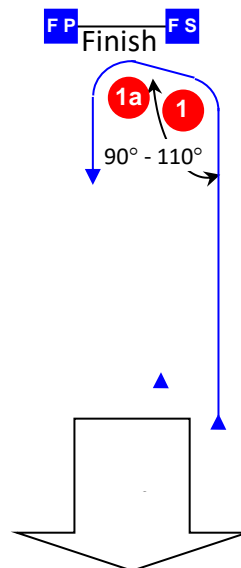
LA



Course: Leeward finish

Signal	Mark Rounding Order
LA2	Start – 1 – 1a – 4s/4p – 1 – 1a – Finish
LA3	Start – 1 – 1a – 4s/4p – 1 – 1a – 4s/4p – 1 – 1a – Finish
LA4	Start – 1 – 1a – 4s/4p – 1 – 1a – 4s/4p – 1 – 1a – 4s/4p – 1 – 1a – Finish

WA



Course: Windward Finish

Signal	Mark Rounding Order
WA2	Start – 1 – 1a – 4s/4p – Finish
WA3	Start – 1 – 1a – 4s/4p – 1 – 1a – 4s/4p – Finish
WA4	Start – 1 – 1a – 4s/4p – 1 – 1a – 4s/4p – 1 – 1a – 4s/4p – Finish

Mark	Description	
1	Large orange cylindrical Buoy	
1a	Small orange round Buoy	
4s 4p	Large orange cylindrical Buoy	
SS	Starting mark starboard end	Orange staff on race committee boat
SP	Starting mark port end	Small orange round buoy
	LA	WA
FS	Finishing mark starboard end	Small orange round buoy
FP	Finishing mark port end	Blue staff on race committee boat
		Small orange round buoy