



OCEANBRIDGE NZL SAILING REGATTA

Thursday 17th February to Sunday 20th February 2022

The Organising Authority is Yachting New Zealand, and the event will be hosted by Wakatere Boating Club, Takapuna Boating Club and Murrays Bays Sailing Club.

SAILING INSTRUCTIONS (SIs)

Updates 16/02/22

The notation '[NP]' in a rule of the sailing instructions (SIs) means that a boat may not protest another boat for breaking that rule. This changes RRS 60.1(a).

1 RULES

- 1.1 The event is governed by the rules as defined in The Racing Rules of Sailing.
- 1.2 The Yachting New Zealand Safety Regulation Part 1 will apply.
- 1.3 Appendix T, Arbitration, will apply.
- 1.4 **Decisions of the Protest Committee will be final as provided in RRS 70.5.**

2 CHANGES TO SAILING INSTRUCTIONS

- 2.1 Any change to the sailing instructions will be posted before 0900 on the day it will take effect, except that any change to the schedule of races will be posted by 2000 on the day before it will take effect.

3 COMMUNICATIONS WITH COMPETITORS

- 3.1 Notices to competitors will be posted on the official notice board located at <https://www.yachtingnz.org.nz/nzl-sailing/oceanbridge-nzl-sailing-regatta>
- 3.2 The race office is located upstairs at Wakatere Boating Club, telephone 0273811090 email Sam@yachtingnz.org.nz

4 CODE OF CONDUCT

- 4.1 [DP] Competitors and support persons shall comply with reasonable requests from race officials.

5 SIGNALS MADE ASHORE

- 5.1 Signals made ashore will be displayed on the flagpole of each regatta launching venue.

5.2 When flag AP is displayed ashore, '1 minute' is replaced with 'not less than 30 minutes' in Race Signals AP.

6 SCHEDULE OF RACES, RACE AREA ASSIGNMENTS AND TIME OF FIRST WARNING SIGNAL

6.1 The race schedule, including the time of the first warning signals and assignment of classes to Race Areas is shown in SI Addendum C.

6.2 One extra race per day may be sailed, provided that no class becomes more than one race ahead of schedule and the change is made according to SI 2.1.

6.3 To alert boats that a race or sequence of races will begin soon, the orange starting line flag will be displayed with one sound at least five minutes before a warning signal is made.

6.4 On Sunday 20th February no warning signal will be made after 16:00.

7 CLASS FLAGS

7.1

Class	Class Flag
ILCA 7	White with red stardust laser symbol
ILCA 6	Blue with red stardust laser symbol
Kitefoiling	Black with white Formula Kite logo
470	White with blue 470 logo
420	Light Blue with 420 logo
49er	Red with black 49er logo
49erFX	Blue with black 49er logo
29er	White with red 29er logo

8 RACING AREAS

8.1 SI Addendum A shows the approximate location of the racing areas.

9 COURSES

9.1 The diagrams in SI Addendum B show the courses, including the approximate angles between legs, the order in which marks are to be passed, and the side on which each mark is to be left.

9.2 Courses will not be shortened. This changes RRS 32.

10 MARKS

10.1 Mark descriptions are as follows:

Course marks Wakatere (Kitefoil)

Mark	Description
1	Yellow Cylinder
4s/4p	Yellow Cylinder
Start – Starboard End	Race Committee Signal Vessel
Start – Port End	Red Cylinder
Finish – Starboard End	Race Committee Signal Vessel
Finish – Port End	Orange tear drop

Course marks Takapuna (420,470, ILCA 6 & ILCA 7)

Mark	Description	New mark description as provided in SI 12
1	Orange Cylinder	Blue cylinder
2	Orange Cylinder	Pink cylinder
3s/3p	Orange Cylinder	N/A
4s/4p	Yellow Cylinder	N/A
Start – Starboard End	Race Committee Signal Vessel	N/A
Start – Port End	Orange tear drop	N/A
Finish – Starboard End	Race Committee Signal Vessel	N/A
Finish – Port End	Blue tear drop	N/A

Course marks MBSC (29er)

Mark	Description	New mark description as provided in SI 12
1	Red Cylinder	Yellow Cylinder
4s/4p	Red Cylinder	N/A
Start – Starboard End	Race Committee Signal Vessel	N/A
Start – Port End	Red Cylinder	N/A
Finish – Starboard End	Race Committee Signal Vessel	N/A
Finish – Port End	Orange Cylinder	N/A

Course marks MBSC Torbay (49er, FX)

Mark	Description	New mark description as provided in SI 12
1	Orange Yellow	Blue cylinder
1A	Large red	
4s/4p	Yellow cylinder	N/A
Start – Starboard End	Race Committee Signal Vessel	N/A
Start – Port End	Red truncated cone	N/A
Finish – Starboard End	Race Committee Signal Vessel	N/A
Finish – Port End	Red truncated cone	N/A

11 THE START

11.1 The starting line is between a staff displaying an orange flag on the race committee signal vessel at the starboard end and the course side of the port-end starting mark

11.2 [DP] Boats whose warning signal has not been made shall avoid the starting area during the starting sequence for other races.

11.3 A boat that does not start within four(4) minutes after her starting signal will be scored Did Not Start without a hearing. This changes RRS A5.1 and A5.2.

12 CHANGE OF THE NEXT LEG OF THE COURSE

12.1 To change the next leg of the course, the race committee will lay a new mark (or move the finishing line) and remove the original mark as soon as practicable. When in a subsequent change a new mark is replaced, it will be replaced by an original mark.

13 THE FINISH

13.1 For the trapezoid the finishing line is between a staff displaying a blue flag on the finishing mark at the starboard end and the course side of the port end finishing mark. For the windward leeward courses, the finishing line is between a staff displaying a blue flag on the finishing mark at the port end and the starboard end finishing mark.

14 TIME LIMITS [AND TARGET TIMES]

14.1 The Race Time Limit (see RRS 35) and the Target Time are shown in the table below.

Class	Target Time	Race Time Limit	Finishing Window
ILCA 7	35	50	10

ILCA 6	35	50	10
Kitefoiling	10	25	10
470	35	50	10
420	35	50	10
49er	25	45	10
49erFX	25	45	10
29er	25	45	10

14.2 The race committee may award a finishing score to a boat that is still racing by displaying to her from a committee vessel (which may be in motion) flag W with one sound signal. A boat so notified is no longer required to sail the course (changing rule 28), shall stop racing and shall return to the starting area, or return ashore if there is no more racing. A finishing score under this Sailing Instruction will be the score she would have received had she sailed the course and finished within any time limit, without gaining or losing any place. However, when two or more boats that are overlapped are notified, they will be scored as if they were tied.

14.3 Failure to meet the Target Time will not be grounds for redress. This changes RRS 62.1(a).

15 HEARING REQUESTS

15.1 For each class, the protest time limit is 60 minutes after the last boat in that class finishes the last race of the day or the race committee signals no more racing today, whichever is later. The time will be posted on the official notice board.

15.2 Hearing request forms are available from the registration desk at each launching venue.

15.3 Notices will be posted no later than 30 minutes after the protest time limit to inform competitors of hearings in which they are parties or named as witnesses. Hearings will be held in the protest rooms, located either upstairs at Wakatere Boating Club or Murrays Bay Sailing Club, beginning at the time posted.

15.4 A list of boats that have been penalized for breaking RRS 42 under Appendix P will be posted.

16 [NP][DP] SAFETY REGULATIONS

16.1 (a) Competitors shall individually check-out before racing by using a phone to scan the QR codes located at each launching venue and on the Yachting New Zealand App. If any competitors do not have an available phone, they can sign on at the registration desk at their venue.

(b) Competitors shall individually check-in immediately after returning to the shore from racing by using a phone to scan the QR codes located upstairs at each launching venue and on the Yachting New Zealand App. If any competitors do not have an available phone, they can sign off at the registration desk at each venue.

16.2 [DP] A boat that retires from a race shall notify the race committee at the first reasonable opportunity.

17 REPLACEMENT OF CREW OR EQUIPMENT

17.1 [DP] Substitution of competitors in double handed classes is not allowed without prior written approval of the protest committee.

17.2 [DP] Substitution of damaged or lost equipment is not allowed unless authorized in writing by the technical committee. Requests for substitution shall be made to the committee at the first reasonable opportunity, which may be after the race.

18 EQUIPMENT AND MEASUREMENT CHECKS

18.1 A boat or equipment may be inspected at any time for compliance with the class rules, notice of race and sailing instructions.

18.2 [DP] When instructed by a race official on the water, a boat shall proceed to a designated area for inspection.

19 [DP] SUPPORT TEAMS

19.1 All support vessels shall register with the organising authority with the names of the competitors they are supporting at registration. Only Olympic classes are permitted to have contact with their registered support vessel while on the water.

19.2 Youth classes are not permitted to have any contact with support vessels or spectators while on the water. The OA will provide a race support vessel to carry youth competitor food bags and spares.

19.3 All support vessels shall keep at least 100m from the racing area whilst boats are racing.

19.4 Sufficient personal flotation devices for each crew member must be carried or worn in all support vessels at all times in accordance with New Zealand Maritime Law.

20 [NP] TRASH DISPOSAL

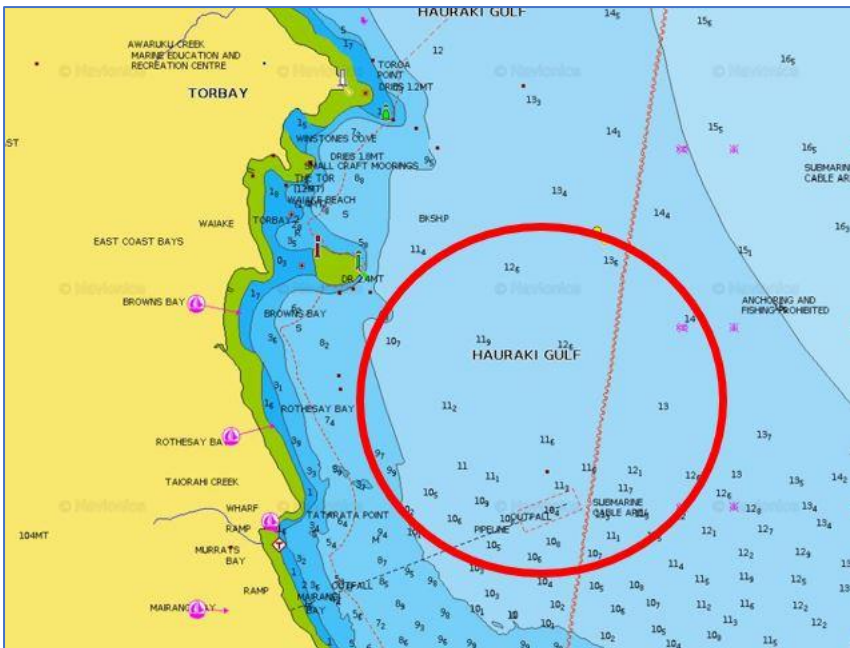
20.1 Trash may be placed aboard support person vessels.

21 RISK STATEMENT

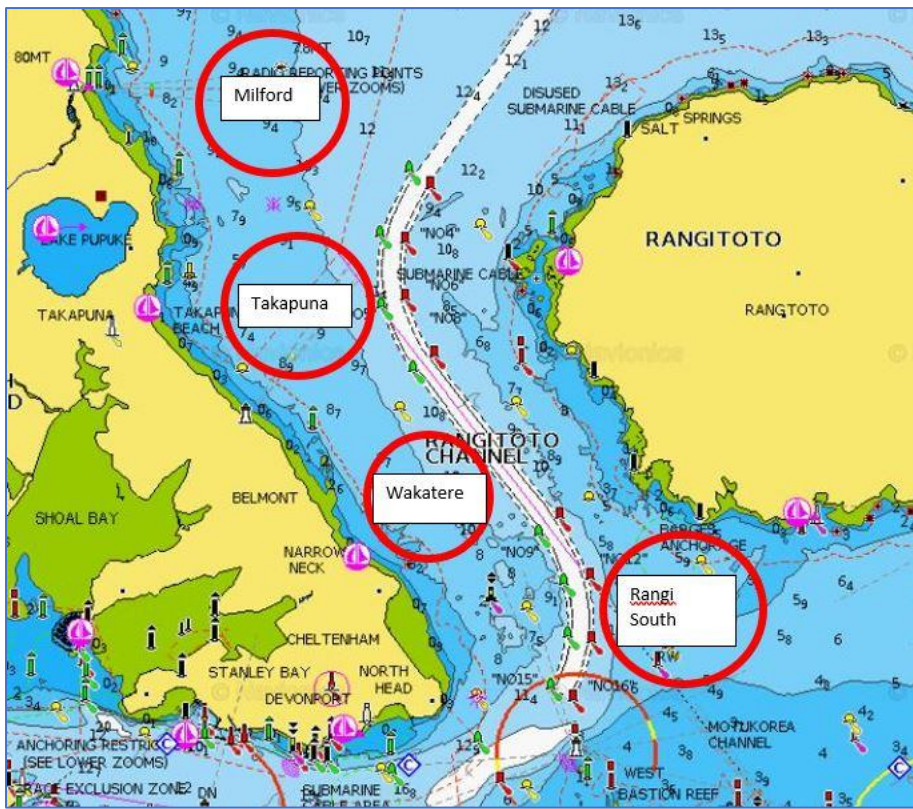
RRS 3 states: 'The responsibility for a boat's decision to participate in a race or to continue to race is hers alone.' By participating in this event each competitor agrees and acknowledges that sailing is a potentially dangerous activity with inherent risks. These risks include strong winds and rough seas, sudden changes in weather, failure of equipment, boat handling errors, poor seamanship by other boats, loss of balance on an unstable platform and fatigue resulting in increased risk of injury. Inherent in the sport of sailing is the risk of permanent, catastrophic injury or death by drowning, trauma, hypothermia or other causes.

Addendum A Racing Areas

MBSC:

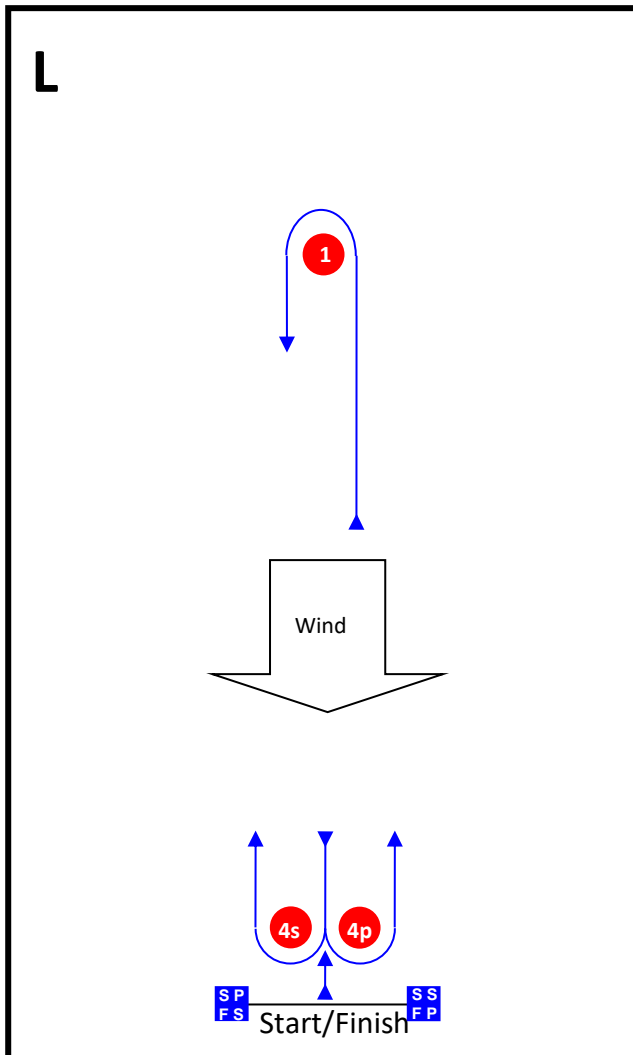


Takapuna/ Wakatere:



Addendum B Courses

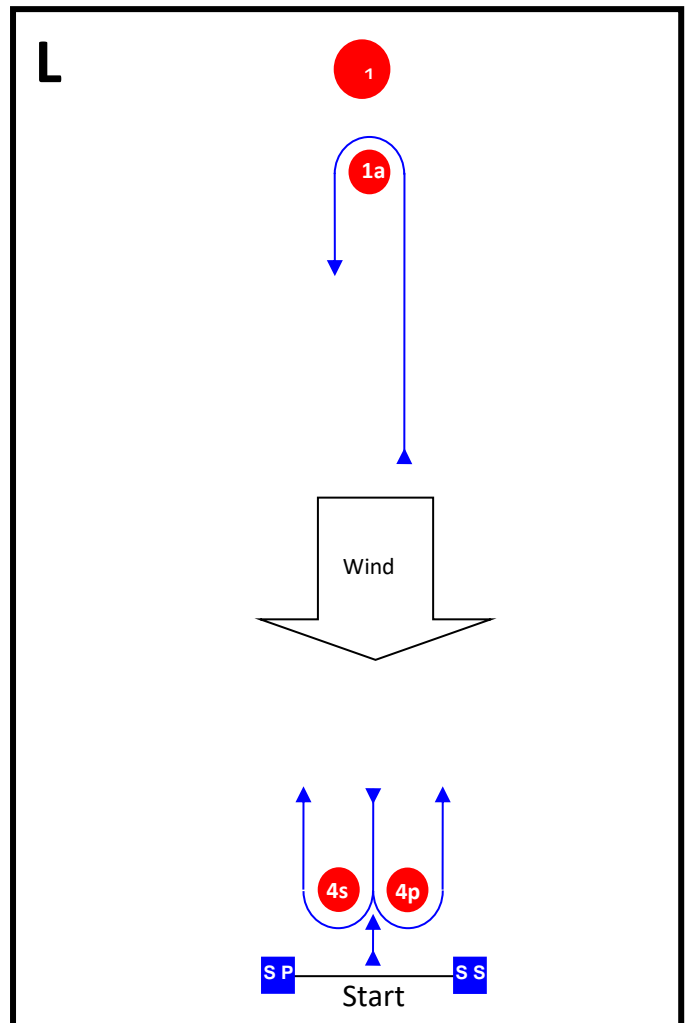
49er, Kitefoil:



Course: Leeward finish

Signal	Mark Rounding Order
L2	Start – 1 – 4s/4p – 1 – Finish
L3	Start – 1 – 4s/4p – 1 – 4s/4p – 1 – Finish
L4	Start – 1 – 4s/4p – 1 – 4s/4p – 1 – 4s/4p – 1 – Finish

49erFX:



Course: Leeward Finish

Signal	Mark Rounding Order
L2	Start – 1a – 4s/4p – 1a- Finish
L3	Start – 1a – 4s/4p – 1 a– 4s/4p- 1a-Finish
L4	Start – 1a – 4s/4p – 1a – 4s/4p – 1a – 4s/4p- 1a- Finish

420, 470, ILCA 6, ILCA 7:

I

Course: Inner Trapezoid

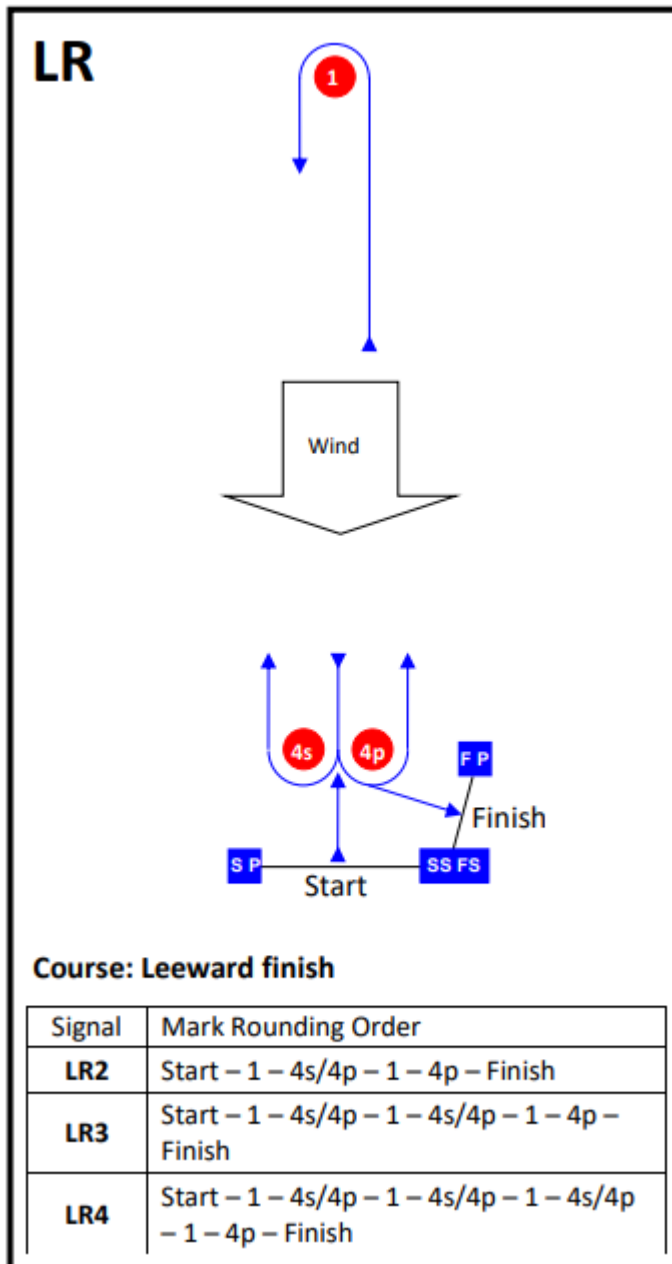
Signal	Mark Rounding Order
I2	Start – 1 – 4s/4p – 1 – 2 – 3p – Finish
I3	Start – 1 – 4s/4p – 1 – 4s/4p – 1 – 2 – 3p – Finish

O

Course: Outer Trapezoid

Signal	Mark Rounding Order
O2	Start – 1 – 2 – 3s/3p – 2 – 3p – Finish
O3	Start – 1 – 2 – 3s/3p – 2 – 3s/3p – 2 – 3p – Finish

29er:



Addendum C – Schedule of race and time of warning signal

Class	Course Area	Total Races	Thursday 17 th February 2022		Friday 18 th February 2022		Saturday 19 th February 2022		Sunday 20 th February 2022	
			Time	Number of races	Time	Number of races	Time	Number of races	Time	Number of races
470	Takapuna	12	1300	3	1200	4	1200	3	1100	2
420	Takapuna	12	1305	3	1205	4	1205	3	1105	2
ILCA 7	Takapuna	12	1310	3	1210	4	1210	3	1110	2
ILCA 6	Takapuna	12	1315	3	1215	4	1215	3	1115	2
Kitefoil	Wakatere	14	Following Wind foil Races	3	Following Wind foil Races	4	Following Wind foil Races	4	Following Wind foil Races	3
29er	MBSC	12	1300	3	1200	4	1200	3	1100	2
49er	MBSC/Tor bay	12	1300	3	1200	3	1200	3	1200	3
49erFX	MBSC/Tor bay	12	1305	3	1205	3	1205	3	1205	3