



OCEANBRIDGE NZL SAILING REGATTA



Olympic and Youth Classes Regatta.
Wednesday 16th February to Sunday 20th February 2022

The Organising Authority is Yachting New Zealand, and the event will be hosted by the Wakatere Boating Club, Narrow Neck Beach, Auckland

This event is run as a selection for the 2022 New Zealand Youth Sailing Team.

Notice of Race

Updates 11/02/22

1 RULES

- 1.1 The event is governed by the rules as defined in The Racing Rules of Sailing.
- 1.2 The Yachting New Zealand Safety Regulations Part 1 shall apply.
- 1.3 Appendix T, Arbitration will apply

2 SAILING INSTRUCTIONS

- 2.1 The sailing instructions will be available on the 14th of February at <https://www.yachtingnz.org.nz/>.

3 COMMUNICATION

- 3.1 The online official notice board is located at <https://www.yachtingnz.org.nz/>

4 ELIGIBILITY AND ENTRY

Youth:	
Event	Class
Girl's One-person Dinghy	ILCA 6
Boy's One-person Dinghy	ILCA 6
Boy's Skiff	29er
Girls' Skiff	29er
Girl's Two-person Dinghy	420
Boy's/Mixed Two-person Dinghy	420

4.1	Youth Mixed Two-person Multihull Withdrawn	Nacra 15
	Girl's Kitefoil Withdrawn	International Kite Racing Class and Foil
	Boy's Kitefoil	International Kite Racing Class and Foil
Olympic Classes / Open (open to all genders):		
	ICLA 7	
	ILCA 6	
	470	
	49er	
	49er FX	
	Nacra 17 (Foiling) Withdrawn	
	International Kite Racing Class and Foil	
	420	
	29er	

4.2 All competitors in youth classes shall be under the age of 19 years on 31 December 2022.

4.3 Eligible boats may enter by completing the electronic entry for that is located at <https://www.yachtingnz.org.nz/nzl-sailing/oceanbridge-nzl-sailing-regatta>

4.4 No entries will be accepted after 1700hrs on ~~Sunday 6th February 2022~~. **Tuesday 1st February 2022.**

4.5 If at the closing date of entries, fewer than four (4) entries have been received in any class, the Organising Authority reserves the right to either cancel racing or make other arrangements for the class or classes concerned.

4.6 All entrants and crew members shall be financial members of a yacht club affiliated to Yachting New Zealand, or be a member of his/her Member National Authority or one of its affiliated organisations (such membership shall be established by the competitor).

4.7 For the Olympic classes each crew shall comply with World Sailing Regulation 19.

5 FEES

5.1 Each competitor will be charged an entry fee of NZL \$150 per sailor, payable to the organising authority as instructed on the entry form.

5.2 There will be no refund if entered competitors withdraw their entry after the entry deadline.

6 ADVERTISING

6.1 Boats may be required to display advertising chosen and supplied by the organizing authority.

6.2 The organizing authority may provide bibs that competitors are required to wear as permitted by the World Sailing Advertising Code.

7 FORMAT

7.1 The event will consist of a single series

7.2 The ILCA 6 and the Boys, and Girls One Person Dinghy shall race and be scored as one fleet.

7.3 The 470 class shall race and be scored as one fleet.

7.4 The **Open 420**, Boys and Girls Two-Person Dinghy shall race and be scored as one fleet.

7.5 The **Open 29er**, Boys and Girls Skiff shall race and be scored as one fleet.

7.6 The Kitefoil and Boys and Girls Kitefoil may race and be scored as one fleet.

8 SCHEDULE

8.1 Registration for all competitors and support vessels will be on:

~~Wednesday 16th February 2022~~ Thursday 17th February 2022 from ~~0830hrs to 1030hrs~~ 0900 to 1100hrs at each launching venue.

8.2 ~~For youth classes equipment inspection and event measurement shall take place on Wednesday 16th February 2022 from 1300-1900 at Wakatere Boating Club.~~

8.3 ~~A competitors briefing will be held at 1700hrs on Wednesday 16th February 2022 at the Wakatere Boating Club.~~

8.4 The time of the first warning signal for all classes on Thursday 17th February 2022 will be ~~1155hrs.~~ 1255hrs.

8.5 The number of races for each class are as follows:

Class:	Number of Races:
29er	12
ILCA 6	12
ILCA 7	12
420	12
470	12
49er	12
49FX	12
Kitefoil	14
Nacra 15	12
Nacra 17 Foiling	12

8.6 On Sunday 20th February 2022, no warning signal will be made after 1600hrs.

9 EQUIPMENT AND MEASUREMENT

- 9.2 Each boat shall produce or verify the existence of a valid measurement certificate.
- 9.2 ~~[DP] Youth Boats shall be available for equipment inspection on Wednesday 16th February 2022 from 1300hrs to 1900hrs~~
- 9.3 Boats may be inspected at any time.
- 9.4 Youth class competitors will be required to complete an equipment declaration form which will be supplied by the OA.

10 VENUE

The regatta will be split over multiple venues due to Government restrictions.
The International Kite Racing Class and Boy's Kitefoil will race out of Wakatere Boating Club.

The Boy's and Girl's One-person Dinghy, ILCA 6, ILCA 7, Open 420, Boys and Girls Two-Person Dinghy and 470 classes will race out of Takapuna Boating Club.

The Boy's and Girl's Skiff will race out of Murrays Bay Sailing Club.

The 49er and 49erFX will race out of Murrays Bay Sailing Club.

Attachment 1 shows the location of the event venue and the approximate location of the possible racing areas.

11 COURSES

The courses to be sailed will be trapezoid or windward/leeward courses.

12 PENALTY SYSTEM

- 12.1 Appendix P, Special Procedures for rule 42, will apply.
- 12.2 For the 49er, 49FX, 29er, Windfoiling, Kitefoiling, Nacra 15 and Nacra 17 Foiling classes, **RRS 44.1 and RRS P2.1 are changed** so that the Two-Turns Penalty is replaced by the One-Turn Penalty.

13 SCORING

- 13.1 Five (5) races are required to be completed to constitute a series.
- 13.2 (a) When fewer than five (5) have been completed, a boat's series score will be the total of her race scores.
(b) When five (5) or more races have been completed, a boat's series score will be the total of her race scores excluding her worst score.

14 COACH BOATS, SUPPORT BOATS AND SPECTATORS [DP]

- 14.1 Olympic class support vessels shall register with the organising authority with the names of the competitors they are supporting at registration. Olympic classes are only permitted to have contact with their registered support vessel while on the water.
- 14.2 Youth classes are not permitted to have any contact with support vessels or spectators while on the water. The OA will provide a race support vessel to carry youth competitor food bags and spares.
- 14.3 All support vessels shall keep at least 100m from the racing area whilst boats are racing.
- 14.4 Sufficient personal flotation devices for each crew member must be carried or worn in all support vessels at all times in accordance with New Zealand Maritime Law.

15 RADIO COMMUNICATION

Except in an emergency, a boat that is racing shall not make voice or data transmission and shall not receive voice or data communication that is not available to all boats. This restriction also applies to mobile phones. [DP]

16 DRUG TESTING

Competitors are reminded of the World Sailing rules and regulations concerning the use of banned methods and substances, which are contained in World Sailing Anti-Doping Code. Drug testing may take place during this event.

17 Berthing

Youth boats shall be kept in their assigned places in the boat park.

18 PRIZES

Prizes shall be awarded to the winners of each event.

19 RIGHTS TO USE NAME AND LIKENESS

In signing the Entry Form and participating in the regatta a competitor automatically grants the Organising Authority and the sponsors of the regatta the right in perpetuity to make, use and show, from time to time and at their discretion, any motion pictures, still pictures and live or taped television and other reproductions of him/her during the period of the regatta and in all material related to the regatta without compensation.

20 COVID 19

- 20.1 In accordance with the New Zealand COVID-19 Protection Framework (traffic light system) all competitors, volunteers, supporters, coaches, and event staff that attend the event need to be fully vaccinated against COVID 19 and provide documented proof on entry, or obtain an official medical exemption.
- 20.2 Any person who has obtained a medical exemption may be required to do a COVID test prior to

participation in the event.

- 20.3 If competitors from regions outside of Auckland are unable to travel to the event due to government restrictions, the number of competitors unable to travel, and the overall viability of the event will be factored into the decision whether to cancel the event or not.
- 20.4 If any region that a competitor is entered from is at a different traffic light level than Auckland, all competitors and families from that region will be required to consider themselves still under that Alert Level, and precautions will be taken to ensure the segregation and physical distancing of those competitors and families.
- 20.5 If it becomes necessary to cancel the event, payments made to YNZ by competitors in relation to the event will be refunded.
- 20.6 For further information regarding COVID 19 alert levels, measures and advice can be found at <https://www.yachtingnz.org.nz/news/ynz-advice-clubs-during-covid-19-alert-levels>.

21 RISK STATEMENT

RRS 3 states: 'The responsibility for a boat's decision to participate in a race or to continue to race is hers alone.' By participating in this event each competitor agrees and acknowledges that sailing is a potentially dangerous activity with inherent risks. These risks include strong winds and rough seas, sudden changes in weather, failure of equipment, boat handling errors, poor seamanship by other boats, loss of balance on an unstable platform and fatigue resulting in increased risk of injury. **Inherent in the sport of sailing is the risk of permanent, catastrophic injury or death by drowning, trauma, hypothermia or other causes.**

22 INSURANCE

Each participating boat shall be insured with third-party liability insurance with a minimum cover of \$1,000,000 per incident or the equivalent.

23 FURTHER INFORMATION

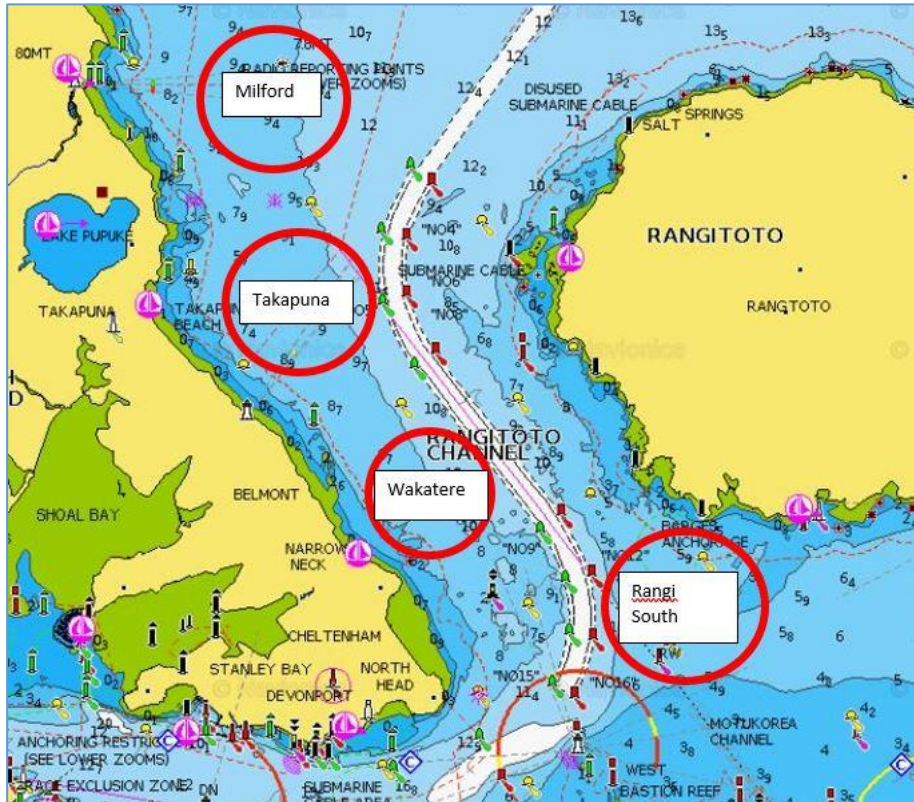
For further information please contact: sam@yachtingnz.org.nz

24 AMENDMENTS TO THE NOTICE OF RACE

The Notice of Race may be changed. Changes will be posted on www.yachtingnz.org.nz

Attachment 1
Possible Racing Areas

Wakatere/ Takapuna



MBSC/Torbay

