



Yachting New Zealand Christmas Cup

Saturday 18th to Sunday 19th December 2021

The Organising Authority is Yachting New Zealand and the event will be hosted by Royal Akarana Yacht Club , 10 Tamaki Drive, Orakei, Auckland 1071

SAILING INSTRUCTIONS (SIs)

Amendments 18/12/2021

1 RULES

- 1.1** The event is governed by the rules as defined in The Racing Rules of Sailing.
- 1.2** Appendix T, Arbitration, will apply.

2 CHANGES TO SAILING INSTRUCTIONS

- 2.1** Any change to the sailing instructions will be posted before 0900 on the day it will take effect. Except that any change to the schedule of races will be posted by 2000 on the day before it will take effect.

3 COMMUNICATIONS WITH COMPETITORS

- 3.1** Notices to competitors will be posted on the official notice board located at <https://www.yachtingnz.org.nz/nzl-sailing/youth-sailing/ynz-christmas-cup> and the Aon Youth Programme Teamapp.
- 3.2** The race office is located in the Joyce Fisher room at Royal Akarana Yacht Club, 0273811090, email sam@yachtingnz.org.nz.
- 3.3** [DP] When flags AP over H or N over H are displayed from a Race Committee vessel, all boats shall immediately return ashore and shall wait there for further signals. (This changes Race Signals AP over H and N over H.)

4 CODE OF CONDUCT

4.1 [DP] Competitors and support persons shall comply with reasonable requests from race officials.

5 SIGNALS MADE ASHORE

5.1 Signals made ashore will be displayed on the flag pole in front of Royal Akarana Yacht Club.

5.2 When flag AP is displayed ashore, '1 minute' is replaced with 'not less than 45 minutes' in Race Signals AP.

5.3 [DP] Flag D with one sound means 'Boats shall not to leave the shore until this signal is made. The warning signal will not be made before the scheduled time or less than 45 minutes after flag D is displayed.'

6 SCHEDULE OF RACES

6.1

Saturday 18 th December 2021		
Class	Number of races	Time of First Warning Signal
ICLA 6	4	1155
29er	4	1200
Windfoil	4	1205
49FX	4	1210

Sunday 19 th December		
Class	Number of races	Time of First Warning Signal
ILCA 6	4	1155
29er	4	1200
Windfoil	5	1205
49FX	4	1210

6.2 To alert boats that a race or sequence of races will begin soon, the orange starting line flag will be displayed with one sound at least five minutes before a warning signal is made.

6.3 On the last scheduled day of racing no warning signal will be made after 1600.

7 CLASS FLAGS

7.1

Class	Class Flag
ILCA 6	Blue with red stardust laser symbol
Windfoiling	Blue with white F
49erFX	Blue with black 49er logo
29er	White with red 29er logo

8 RACING AREA

8.1 SI Addendum A shows the location of the possible racing areas

9 COURSES

9.1 The diagram in SI Addendum B show the courses, including the approximate angles between legs, the order in which marks are to be passed, and the side on which each mark is to be left.

9.2 No later than the warning signal, the race committee signal vessel will display the approximate compass bearing of the first leg.

10 MARKS

10.1 Mark descriptions are as follows:

Mark	Description
1	Large red cylinder (Aon)
1A	Large yellow cylinder
2	Large red cylinder (Aon)
3S/3P	Yellow cylinder
4S/4P	Red cylinder (Aon)
Start – Starboard End	Race committee Vessel
Start – Port End	Yellow cylinder
Finish – Starboard End (Outer trap)	Blue Cylinder
Finish – Port End (Outer Trap)	Race committee vessel
Finish – Starboard End (Windward/Leeward)	Race committee vessel
Finish – Port End (Windward/Leeward)	Blue Cylinder

11 THE START

11.1 The starting line is between a staff displaying an orange flag on the signal vessel at the starboard end and the course side of the port-end starting mark.

11.2 [DP] Boats whose warning signal has not been made shall avoid the starting area during the starting sequence for other races.

11.3 A boat that does not start within four minutes after her starting signal will be scored Did Not Start without a hearing. This changes RRS A5.1 and A5.2.

12 THE FINISH

12.1 For the outer trapezoid finishes the finishing line is between a staff displaying a blue flag on the finish vessel at the port end and the course side of the starboard end finishing mark.

12.2 For the Windward/Leeward finishes the finishing line is between a staff displaying a blue flag on the finish vessel at the starboard end and the course side of the port end finishing mark.

11 PENALTY SYSTEM

11.1 For the 29er, 49erFX and Windfoil classes class(es), RRS 44.1 is changed so that the Two-Turns Penalty is replaced by the One-Turn Penalty

11.2 RRS Appendix P applies.

12 TIME LIMITS [AND TARGET TIMES]

12.1 The Race Time Limit (see RRS 35), Target Time are shown in the table below.

Class	Target Time	Race Time Limit
29er	25	45
49erFX	25	45
Windfoil	15	30
ILCA 6	30	50

12.3 Failure to meet the Target Time will not be grounds for redress. This changes RRS 62.1(a).

13 HEARING REQUESTS

13.1 For each class, the protest time limit is 60 minutes after the last boat in that class finishes the last race of the day or the race committee signals no more racing today, whichever is later. The time will be posted on the official notice board.

13.2 Hearing request forms are available at <https://www.yachtingnz.org.nz/nzl-sailing/youth-sailing/ynz-christmas-cup>

13.3 Notices will be posted no later than 30 minutes after the protest time limit to inform competitors of hearings in which they are parties or named as witnesses. Hearings will be held in the protest room, located at Royal Akarana Yacht Club, beginning at the time posted.

14 SCORING

14.1 1 race is required to be completed to constitute a series.

14.2 (a) When fewer than 5 races have been completed, a boat's series score is the total of her race scores.

(b) When 5 or more races have been completed, a boat's series score is the total of her race scores excluding her worst score.

15 [DP] SAFETY REGULATIONS

15.1 [DP] Check-out and check-in ashore

(a) Competitors shall individually check-out before racing by personally signing check out sheets located at Royal Akarana Yacht Club.

(b) Competitors shall individually check-in immediately on returning to shore after racing by personally signing check-in sheets located at Royal Akarana Yacht Club.

15.2 A boat that retires from a race shall notify the race committee at the first reasonable opportunity.

16 [DP] SUPPORT TEAMS

16.1 All official and support vessels shall always have an engine safety cut out switch (kill cord) attached to the driver while the engine is running, unless prior written exemption has been provided by the Organising Authority.

17 PRIZES

17.1 Prizes will be given for the winners of each event.

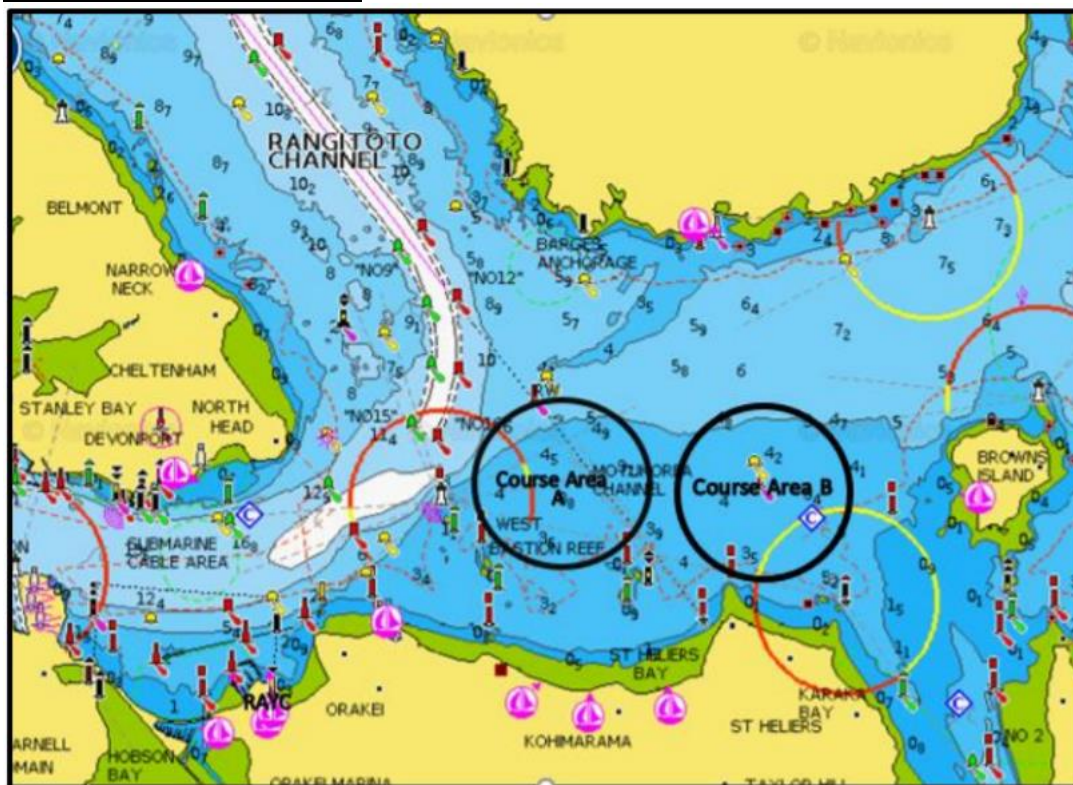
18 RISK STATEMENT

18.1 RRS 3 states: 'The responsibility for a boat's decision to participate in a race or to continue to race is hers alone.' By participating in this event each competitor agrees and acknowledges that sailing is a potentially dangerous activity with inherent risks. These risks include strong winds and rough seas, sudden changes in weather, failure of equipment, boat handling errors, poor seamanship by other boats, loss of balance on an unstable platform and fatigue resulting in increased risk of injury. **Inherent in the sport of sailing is the risk of permanent, catastrophic injury or death by drowning, trauma, hypothermia or other causes..**

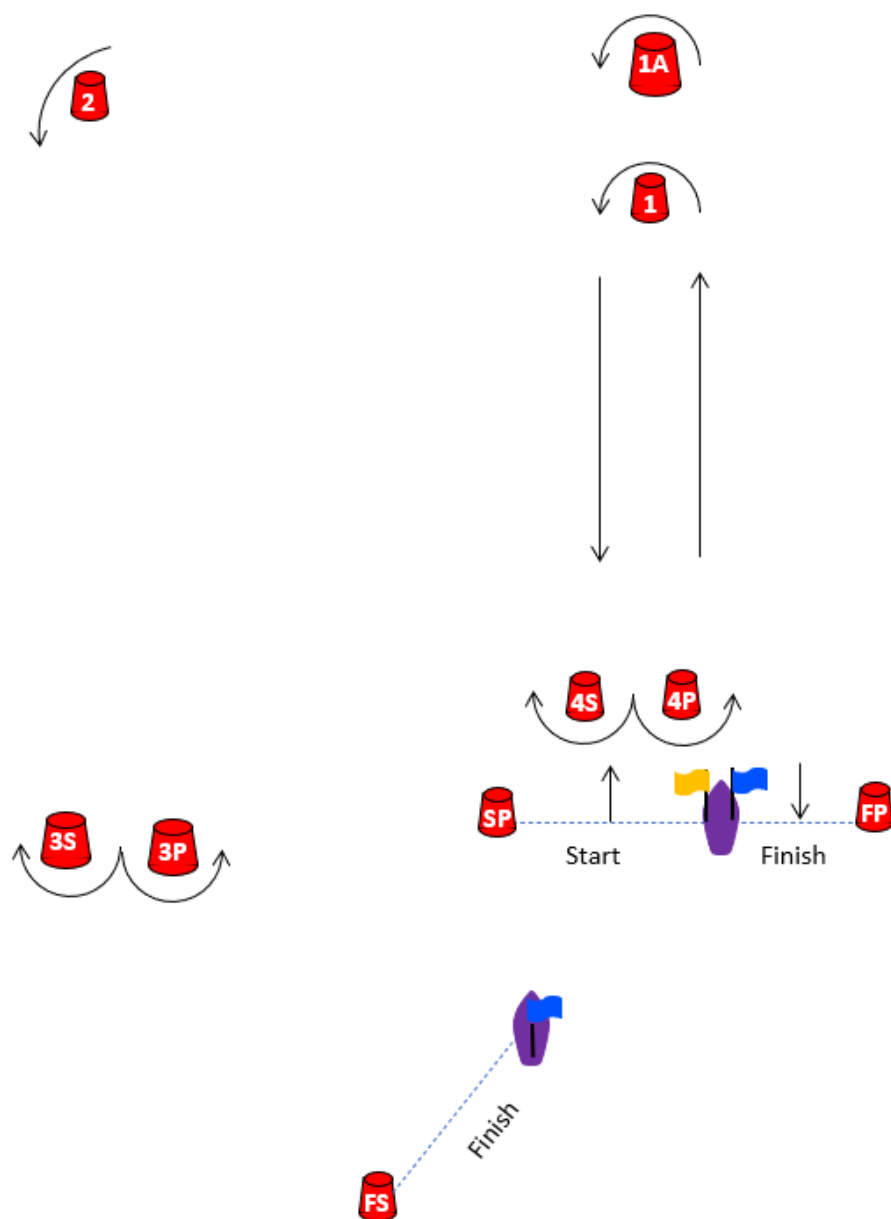
19 INSURANCE

19.1 Each participating boat shall be insured with valid third-party liability insurance with a minimum cover of \$1,000,000 per incident or the equivalent.

Addendum A Racing Areas



Addendum B Courses



Course	Mark rounding order
L2	Start – 1 – 4S/4P – 1 – Finish
L3	Start – 1 – 4S/4P – 1 – 4S/4P – 1 – Finish
LA2	Start – 1A – 4S/4P – 1A – Finish
LA3	Start – 1A – 4S/4P – 1A – 4S/4P – 1A – Finish
O2	Start -1 – 2 – 3S/3P- 2-3S/3P - Finish
O3	Start 1-2-3S/3P-2-3S/3P-2-3S/3P -Finish
Note: Mark 1A may be to windward of Mark 1	