



## OCEANBRIDGE NZL SAILING REGATTA

*Friday 9 April to Sunday 11 April 2021*

*The Organising Authority is Yachting New Zealand, and the event will be hosted by Wakatere Boating Club, Narrow Neck Beach, Auckland*

### SAILING INSTRUCTIONS (SIs)

The notation '[NP]' in a rule of the sailing instructions (SIs) means that a boat may not protest another boat for breaking that rule. This changes RRS 60.1(a).

#### 1 RULES

- 1.1 The event is governed by the rules as defined in The Racing Rules of Sailing.
- 1.2 Notwithstanding the dispensation granted by Yachting New Zealand sailboard competitors shall comply with clause 1.
- 1.3 Appendix T, *Arbitration*, will apply.

#### 2 CHANGES TO SAILING INSTRUCTIONS

- 2.1 Any change to the sailing instructions will be posted before 0900 on the day it will take effect, except that any change to the schedule of races will be posted by 2000 on the day before it will take effect.

#### 3 COMMUNICATIONS WITH COMPETITORS

- 3.1 Notices to competitors will be posted on the official notice board located at <https://www.yachtingnz.org.nz/nzl-sailing/oceanbridge-nzl-sailing-regatta>
- 3.2 The race office is located upstairs at Wakatere Boating Club, telephone 0273811090 email Sam@yachtingnz.org.nz

**3.3** [DP] While racing, except in an emergency, a boat shall not make voice or data transmissions and shall not receive voice or data communication that is not available to all boats.

#### **4 CODE OF CONDUCT**

**4.1** [DP] Competitors and support persons shall comply with reasonable requests from race officials.

**4.2** [DP] Competitors and support persons shall place advertising provided by the organizing authority with care, seamanship, in accordance with any instructions for its use and without interfering with its functionality.

#### **5 SIGNALS MADE ASHORE**

**5.1** Signals made ashore will be displayed on the flag pole in front of Wakatere Boating Club.

**5.2** When flag AP is displayed ashore, '1 minute' is replaced with the time in minutes shown below in the race signals AP.

Race Area	Race Signal AP not less than time
Rangitoto North West	60
Takapuna	45
Wakatere	30
Rangi South	60
Kohi	75

**5.3** [DP] Flag D with one sound means 'Boats shall not leave the shore' until this signal is made. The warning signal will not be made before the scheduled time or less than the time in minutes shown below.

Race Area	Time
Rangitoto North West	60
Takapuna	45
Wakatere	30
Rangi South	60
Kohi	75

#### **6 SCHEDULE OF RACES, RACE AREA ASSIGNMENTS AND TIME OF FIRST WARNING SIGNAL**

**6.1** The race schedule, including the time of the first warning signals and assignment of classes to Race Areas is shown in SI Addendum C.

**6.2** One extra race per day may be sailed, provided that no class becomes more than one race ahead of schedule and the change is made according to SI 2.1.

**6.3** To alert boats that a race or sequence of races will begin soon, the orange starting line flag will be displayed with one sound at least five minutes before a warning signal is made.

## 7 CLASS FLAGS

### 7.1

Class	Class Flag
Laser Standard	White with red stardust laser symbol
Laser Radial	Blue with red stardust laser symbol
Windfoiling	Blue with white F
Kitefoiling	Black with white Formula Kite logo
470 W, 470 M 470 Mixed	White with blue 470 logo
420	Light Blue with 420 logo
49er	Red with black 49er logo
49erFX	Blue with black 49er logo
29er	White with red 29er logo
Nacra15	White with Nacra logo
Narca17 Foiling	Yellow with Nacra 17 logo

## 8 RACING AREAS

**8.1** SI Addendum A shows the location of the racing areas.

## 9 COURSES

**9.1** The diagrams in SI Addendum B show the courses, including the approximate angles between legs, the order in which marks are to be passed, and the side on which each mark is to be left.

**9.2** No later than the warning signal, the race committee signal vessel will display the approximate compass bearing of the first leg.

## 10 MARKS

**10.1** Mark descriptions are as follows:

### Race team Alpha (Laser, Radial, 470, 420, 29er)

Mark	Description	New mark description as provided in SI 13
1	Large red Cylinder (Aon)	Blue cylinder
1B	Pink Cylinder	Black cylinder
4s/4p	Red Cylinder	N/A
Start – Starboard End	Race Committee Signal Vessel	N/A
Start – Port End	Yellow cylinder	N/A
Finish – Starboard End	Race Committee Signal Vessel	N/A
Finish – Port End	Orange tear drop	N/A

### Race team Bravo (Windfoiling, Kitefoiling, Nacra 17, Narca 15, 49er, 49erFX)

Mark	Description	New mark description as provided in SI 13
1	Large Yellow	Blue cylinder
1A	Yellow truncated cone	N/A
1B	Large red cylinder (Aon)	Pink cylinder
4s/4p	Yellow cylinder	N/A
Start – Starboard End	Race Committee Signal Vessel	N/A
Start – Port End	Red cylinder	N/A
Finish – Starboard End	Race Committee Signal Vessel	N/A
Finish – Port End	Red truncated cone	N/A

## 11 OBSTRUCTIONS

**11.1** A moving prohibited zone extending to 100 metres astern and 100 meters to each side and continuing at such width 500 metres ahead, is reserved around any vessel 500 gross tonnage or greater or 40 metres length overall or greater.

## 12 THE START

**12.1** Races will be started using RRS 26 with the warning signal made 5 minutes before the starting signal.

**12.3** The starting line is between a staff displaying an orange flag on the race committee signal vessel at the starboard end and the course side of the port-end starting mark

**12.4** [NP][DP] Boats whose warning signal has not been made shall avoid the starting area during the starting sequence for other races.

**12.6** A boat that does not start within four(4) minutes after her starting signal will be scored Did Not Start without a hearing. This changes RRS A5.1 and A5.2.

### **13 CHANGE OF THE NEXT LEG OF THE COURSE**

**13.1** To change the next leg of the course, the race committee will lay a new mark (or move the finishing line) and remove the original mark as soon as practicable. When in a subsequent change a new mark is replaced, it will be replaced by an original mark.

13.2 For an LA course change, when Mark 1 has been replaced, Mark 1a will not be reset. This changes RRS 33.

### **14 THE FINISH**

**14.1** The finishing line is between a staff displaying a blue flag on the finishing mark at the starboard end and the course side of the port end finishing mark.

### **15 PENALTY SYSTEM**

**15.2** For the 49er, 49FX, 29er, Windfoiling, Kitefoiling, Nacra 15 and Nacra 17 class(es), RRS 44.1 and RRS P2.1 is changed so that the Two-Turns Penalty is replaced by the One-Turn Penalty

**15.3** RRS Appendix P applies.

### **16 TIME LIMITS [AND TARGET TIMES]**

**16.1** The Race Time Limit (see RRS 35) and the Target Time are shown in the table below.

Class	Target Time	Race Time Limit
Laser Standard	30 – 35	50
Laser Radial	30 - 35	50
Windfoiling	15	30
Kitefoiling	10	25
470 W, 470 M, 470 Mixed	25 - 30	45
420	25 - 30	45
49er	25 - 30	45
49erFX	25 - 30	45
29er	25 - 30	45
Nacra15	25 - 30	45
Narca17 Foiling	25 - 30	45

**16.2** The race committee may award a finishing score to a boat that is still racing by displaying to her from a committee vessel (which may be in motion) flag W with one sound signal. A boat so notified is no longer required to sail the course (changing rule 28), shall stop racing and shall return to the starting area, or return ashore if there is no more racing. A finishing score under this Sailing Instruction will be the score she would have received had she sailed the course and finished within any time limit, without gaining or losing any place. However, when two or more boats that are overlapped are notified, they will be scored as if they were tied.

**16.3** Failure to meet the Target Time will not be grounds for redress. This changes RRS 62.1(a).

## **17 HEARING REQUESTS**

**17.1** For each class, the] protest time limit is 60 minutes after the last boat in that class finishes the last race of the day or the race committee signals no more racing today, whichever is later. The time will be posted on the official notice board.

**17.2** Hearing request forms are available from the race office upstairs at Wakatere Boating Club.

**17.3** Notices will be posted no later than 30 minutes after the protest time limit to inform competitors of hearings in which they are parties or named as witnesses. Hearings will be held in the protest room, located upstairs at Wakatere Boating Club, beginning at the time posted

**17.4** A list of boats that have been penalized for breaking RRS 42 under Appendix P will be posted.

**17.7** Breaches of Sailing Instructions 12.4 (Avoiding starting area), 19 (Safety Regulations), 23 (Support teams), 24 (Trash Disposal), 25 (Berthing), 26 (Haul-out restrictions) and 27 (Diving Equipment and Plastic Pools) will not be grounds for protest by a boat. This changes RRS 60.1 (a)

## **18 [NP] SAFETY REGULATIONS**

**18.1** (a) Competitors shall individually check-out before racing by using a phone to scan the QR codes located upstairs at Wakatere Boating Club and on the Yachting New Zealand App. If any competitors does not have an available phone they can sign on at the race office upstairs at Wakatere Boating Club.

(b) Competitors shall individually check-in immediately after returning to the shore from racing by using a phone to scan the QR codes located upstairs at Wakatere Boating Club and on the Yachting New Zealand App. If any competitors does not have an available phone they can sign off at the race office upstairs at Wakatere Boating Club.

**18.2** [DP] A boat that retires from a race shall notify the race committee at the first reasonable opportunity.

## **19 REPLACEMENT OF CREW OR EQUIPMENT**

**19.1** [DP] Substitution of competitors in double handed classes is not allowed without prior written approval of the protest committee.

**19.2** [DP] Substitution of damaged or lost equipment is not allowed unless authorized in writing by the protest committee. Requests for substitution shall be made to the committee at the first reasonable opportunity, which may be after the race.

## **20 EQUIPMENT AND MEASUREMENT CHECKS**

**20.1** A boat or equipment may be inspected at any time for compliance with the class rules, notice of race and sailing instructions.

**20.2** [DP] When instructed by a race official on the water, a boat shall proceed to a designated area for inspection.

## **21 [DP] SUPPORT TEAMS**

**21.1** Except when requested to participate in rescue operations, team leaders, coaches, and other support persons shall stay outside areas where boats are racing and are restricted to a 5 knot speed limit, from the time of the preparatory signal for the first start of a sequence of starts until all boats have finished or the race committee signals a postponement or abandonment of all races. The areas the boats are racing in is defined as the area inside the course and within 100 metres of any mark, lay line, starting line, finishing line or any area where any boat that is racing is sailing or may sail.

**21.2** Every person on board a support vessel less than 6 m in length must wear a properly secured personal flotation device of an appropriate size for that person at all times.

**21.2** All support vessels shall always have a kill-cord attached to the driver while the engine is running, unless prior written exemption has been provided by the Organising Authority

## **22 [NP] TRASH DISPOSAL**

**22.1** Trash may be placed aboard official [or support person] vessels.

## **23 BERTHING**

**23.1** [NP][DP] Boats shall be kept in their assigned places while in the [boat park][harbour].

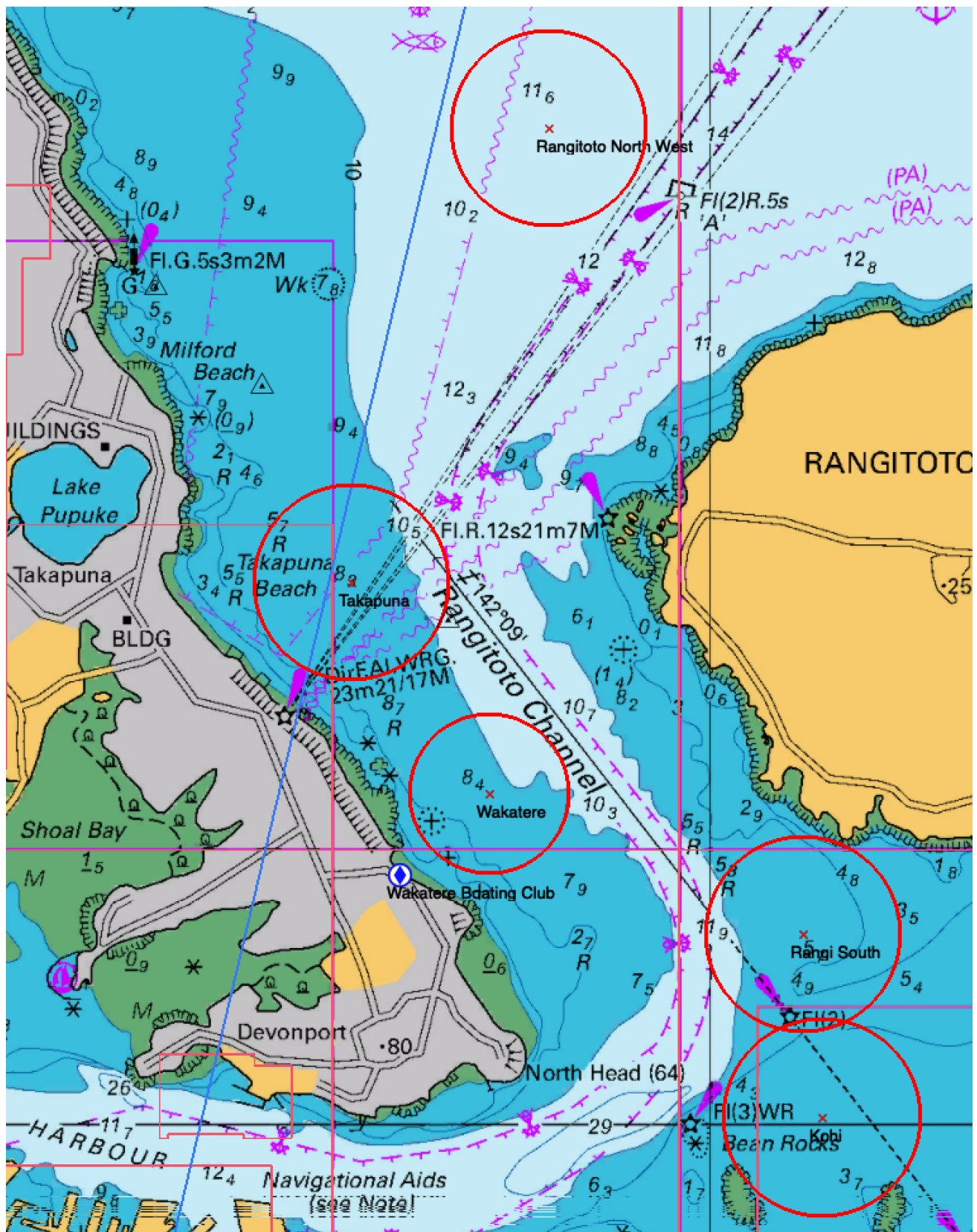
## **24 PRIZES**

**24.1** Prizes will be awarded to the top 3 boats in each event

## **25 RISK STATEMENT**

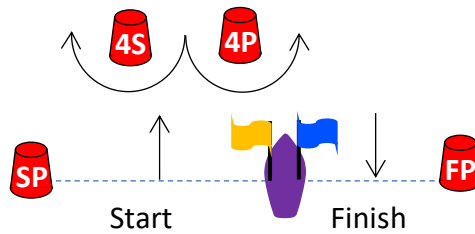
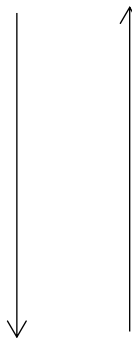
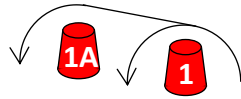
**25.1** RRS 3 states: 'The responsibility for a boat's decision to participate in a race or to continue to race is hers alone.' By participating in this event each competitor agrees and acknowledges that sailing is a potentially dangerous activity with inherent risks. These risks include strong winds and rough seas, sudden changes in weather, failure of equipment, boat handling errors, poor seamanship by other boats, loss of balance on an unstable platform and fatigue resulting in increased risk of injury. **Inherent in the sport of sailing is the risk of permanent, catastrophic injury or death by drowning, trauma, hypothermia or other causes.**

**Addendum A Racing Areas**





**Addendum B Courses**



Course	Mark rounding order
L2	Start – 1 – 4S/4P – 1 – Finish
L3	Start – 1 – 4S/4P – 1 – 4S/4P – 1 – Finish
LA2	Start – 1 – 1A – 4S/4P – 1 – 1A – Finish
LA3	Start – 1 – 1A – 4S/4P – 1 – 1A – 4S/4P – 1 – 1A – Finish
LB2	Start – 1B – 4S/4P – 1B – Finish
LB3	Start – 1B – 4S/4P – 1B – 4S/4P – 1B – Finish
Note: Mark 1B may be to windward of Mark 1	

### Addendum C – Schedule or Races

Class	Saturday 10 <sup>th</sup> April	Time of First Warning Signal Saturday	Race Area
29er	4	1155	Takapuna
470 W	4	1200	Takapuna
470 M	4	1200	Takapuna
470 Mixed	4	1200	Takapuna
420	4	1200	Takapuna
Laser Standard	4	1205	Takapuna
Laser Radial	4	1210	Takapuna
49er	4	1155	Wakatere
49erFX	4	1200	Wakatere
Nacra15	4	1205	Wakatere
Kitefoiling	4	1210	Wakatere
Narca17 Foiling	4	1500	Wakatere
Windfoiling	4	1505	Wakatere

Class	Sunday 11 <sup>th</sup> April	Time of First Warning Signal Sunday	Race Area
29er	4	1055	Takapuna
470 W	4	1100	Takapuna
470 M	4	1100	Takapuna
470 Mixed	4	1100	Takapuna
420	4	1100	Takapuna
Laser Standard	4	1105	Takapuna
Laser Radial	4	1110	Takapuna
49er	4	1055	Wakatere
49erFX	4	1100	Wakatere
Narca17 Foiling	4	1105	Wakatere
Nacra15	4	1110	Wakatere
Windfoiling	4	1400	Wakatere
Kitefoiling	4	1405	Wakatere