

2020 New Zealand Youth Championships
7th to 10th October 2020, Manly, Auckland New Zealand

Sailing Instructions

Amendments 5/10/20

The Organising Authority is Yachting New Zealand in conjunction with Manly Sailing Club.

1. RULES

- 1.1 The regatta will be governed by the rules as defined in *The 2017 -2020 Racing Rules of Sailing* (RRS).
- 1.2 Appendix P, Special Procedures for Rule 42, will apply
- 1.3 The prescriptions of Yachting New Zealand will apply.
- 1.4 Class rules regarding membership will apply.
- 1.5 Decisions of the Protest Committee will be final as provided in RRS 70.5.
- 1.6 A boat shall neither make radio transmissions while racing nor receive radio communications not available to all boats, except in an emergency or when using equipment provided by the race committee. This restriction also applies to mobile telephones.
- 1.7 For the Boy's Skiff, Girl's Skiff, Mixed Two Person Multihull, Boy's Windfoil, Girl's Windfoil, Boy's Kitefoiling and Girl's Kitefoiling RRS 44.1 and RRS P2.1 are changed so that the Two-Turns Penalty is replaced by the One-Turn Penalty.
- 1.8 In all rules governing this regatta;
 - 1.8.1 Both 'athlete' and 'competitor' mean a person competing or intending to compete in the event.
 - 1.8.2 The term 'support team' means coaches, team leaders and other support personnel.
 - 1.8.3 [DP] denotes a rule for which the penalty is at the discretion of the Protest Committee;
 - 1.8.4 [SP] denotes a rule for which a standard penalty may be applied by the Race Committee without a hearing or a discretionary penalty applied by the Protest Committee with a hearing; and
 - 1.8.5 [NP] denotes a rule that shall not be grounds for protest by a boat. This changes RRS 60.1(a).
- 1.9 RRS 63.7 is changed to read: "If there is a conflict between *rules*, the Protest Committee shall resolve that conflict in the manner that it believes will provide the fairest result for all boats affected."

2. [DP] [NP] SAFETY REGULATIONS

- 2.1 The Race Committee will protest a boat for a breach of these safety regulations.
- 2.2 Competitors shall wear personal flotation devices at all times while afloat, except briefly while changing or adjusting clothing or personal equipment. The organizing authority reserves the right to reject any personal flotation device which it considers unsuitable.
- 2.3 Boats not leaving the shore for a scheduled race shall promptly notify the race office.
- 2.4 [SP] Check-Out and Check-in Ashore
 - a) Either helm or crew shall individually check-out before racing by personally signing the 'check-out' sheet.

- b) The same crew member shall individually check-in immediately on returning to shore after racing, by personally signing the “check-in sheet.
 - c) The check-out, check-in sheets will be located on the ground floor of the Manly Sailing Club.
- 2.5 A boat that retires from racing shall notify the Race Committee before leaving the racing area, or if that is not possible, shall notify the Race Office as soon as possible after returning ashore.
- 2.6 Boat shall return to shore immediately after they finish their last race of the day.
- 2.7 When Flags AP over H or N over H are displayed from a Race Committee vessel, all boats shall immediately return ashore and will wait there for further information. (This changes race signals AP over H and N over H.)

3. [DP] CODE OF CONDUCT

- 3.1 Competitors and support teams shall comply with any reasonable request from any official, including attendance at official functions, co-operation with event sponsors and shall not behave so as to bring the event into disrepute.
- 3.2 Boats not racing that are on the course area shall remain clear of the area where boats are racing and of any official vessels.

4. COMMUNICATIONS WITH COMPETITORS

- 4.1 Notices to competitors will be posted on the website <https://www.yachtingnz.org.nz/nzl-sailing/nzl-sailing-foundation-2020-new-zealand-youth-championships>
- 4.2 Notices will also be posted at the Yachting NZ App that will be available in all App stores. Failure for a competitor to access this information will not be grounds for redress. This changes RRS 62.
- 4.3 Signals ashore will be displayed on the flagpoles located outside the Race Office.
- 4.4 Changes to the Sailing Instructions will be posted no later than two hours before the scheduled time of the first race affected by the change.
- 4.5 Class flags for fleets will be class insignia on the following background:

Event	Fleet	Class Insignia	Background Colour
Boy's Windfoil	IQFoil	Blue F	White
Girl's Windfoil			
Boy's One Person Dinghy	Laser Radial	Red Laser insignia	White
Girl's One Person Dinghy			
Boy's Two Person Dinghy	420	Black 420 insignia	White
Girl's Two Person Dinghy			
Boy's Skiff	29er	Red 29er insignia	White
Girl's Skiff			
Mixed Two Person Multihull	Nacra 15	Black Nacra insignia	White
Boys Kitefoiling	Formula Kite	White Formula Kite insignia	Black
Girls Kitefoiling			

- 4.6 When flag AP is displayed ashore, '1 minute' is replaced with 45 minutes in the race signal AP:
- 4.7 [SP] Boats shall be kept in the designated dinghy park. However, kitefoiling and windfoiling equipment may be stored elsewhere overnight. A boat shall not leave the beach until Flag D is displayed ashore. The warning signal will not be made before the scheduled time or less than 45 minutes after flag D is displayed.

5. FORMAT OF RACING

- 5.1 The regatta will consist of a single series.

6. SCHEDULE AND COURSE ASSIGNMENT

- 6.1 The provisional race schedule, including the time of the first warning signals will be posted as SI Addendum C.

6.1.1 An update to SI Addendum C will be posted daily no later than 19:00hrs on the previous evening of any race affected.

6.1.2 When flag AP is displayed afloat, the course area may be changed. A race committee boat will display flag L over the fleet(s) flag and move to the new course area.

- 6.2 On Saturday 10 October no warning signal will be made after 16:00.

7. THE COURSES

- 7.1 The course area is shown in SI Addendum A.
- 7.2 The courses will be Windward/Leeward or Trapezoid. The diagrams in SI Addendum B show the courses, the course designations, the approximate angles between legs, the order in which marks are to be passed, and the side on which each mark is to be left.
- 7.3 To change the next leg of the course, the Race Committee will (a) lay a new mark, (b) move the finishing line, or (c) move the leeward gate. When a new mark is laid, the original mark will be removed as soon as possible. When in a subsequent change and a new mark is replaced, it will be replaced by an original mark.
- 7.4 Courses will not be shortened. This changes RRS 32.

8. MARKS

- 8.1 Marks will be as follows:

Mark	Description	New Mark	Description
1	Large red cylinder (Aon)		
1A	Large yellow cylinder	1A	Black Cylinder
1B	Pink Cylinder	1B	Blue Cylinder
2	Large red cylinder (Aon)	2	Orange Cylinder
3s, 3p, 4s, 4p	Red cylinder (Aon)		
Start	Race committee Vessel		
Start Pin	Race Committee Vessel or Yellow cylinder		
Finish	Race Committee Vessel		
Finish Pin	Race Committee vessel or Pink cylinder		

9. THE START

- 9.1 The Starting Line will be between a staff displaying an orange flag on the race committee vessel at the starboard end and either the course side of the port-end inflatable starting mark or a staff displaying an orange flag on a race committee vessel.

- 9.2 [DP] A buoy may be attached to the race committee starting vessel(s') anchor line just below keel depth. Boats shall not pass between this buoy and the race committee starting boat at any time. This buoy is part of the race committee starting boat ground tackle.
- 9.3 [DP] When a starting sequence is in progress, boats whose warning signal has not been made shall avoid the starting area. The starting area is defined as the area 50 meters from the starting line and marks in all directions.
- 9.4 To alert boats that a race or sequence of races will begin soon, the orange starting line flag will be displayed with one sound at least five minutes before a warning signal is made.
- 9.5 The warning signal for each succeeding race will be made as soon as practicable.

10. THE FINISH

- 10.1 The Finishing Line will be between a staff displaying a blue flag on the race committee vessel and the course side of the nearby inflatable finishing mark or a staff displaying a blue flag on a race committee vessel.

11. TIME LIMITS AND TARGET TIMES

- 11.1 Time limits and target times are as follows:

Fleet	Time Limit	Target Time
Laser Radial	50	30
420	50	30
29er	50	25 - 30
Nacra 15	50	25 - 30
IQ Foil	45	20
Formula Kite	45	20

- 11.2 The race committee may award a finishing score to a boat that is still racing by displaying to her from a committee vessel (which may be in motion) flag W with one sound signal. A boat so notified is no longer required to sail the course (changing rule 28), shall stop racing and shall return to the starting area, or return ashore if there is no more racing. A finishing score under this Sailing Instruction will be the score she would have received had she sailed the course and finished within any time limit, without gaining or losing any place. However, when two or more boats that are overlapped are notified, they will be scored as if they were tied.

12. SCORING

- 12.1 Five races are required to be completed to constitute a series.
- 12.2 The Low Point System of RRS Appendix A will apply. RRS B8 is deleted.
- 12.3 When fewer than five races have been completed, a boat's series score will be the total of her race scores. When five or more races have been completed, a boat's score will be the total of her race scores excluding her worst score.
- 12.4 A boat starting later than 4 minutes after her starting signal will be scored Did Not Start. This changes RRS A4 and A5.
- 12.5 To request correction of an alleged error in posted race or series results, a boat may complete a scoring enquiry form available at the Race Office.
- 12.6 After all racing has finished and the results are finalized, the highest placed boy and the highest place girl in each fleet will be ranked first, and so on to calculate event placings.

13. [DP] EQUIPMENT AND MEASUREMENT CHECKS

A Boat or equipment may be inspected at any time for compliance with the rules.

14. REPLACEMENT OF CREW

No additions or changes to the entry list can be accepted after 5 October 2020 without consultation with the Yachting New Zealand youth team selection panel.

15. OFFICIAL VESSELS

15.1 Official vessels will be marked as follows:

Official Vessel	Flag
Race Committee Vessels	No marking
Jury	Yellow Flag with Black "J"
Gear Vessel	Flag "Gear A or B or C or D"
Safety Vessel	Coloured vest

15.2 Actions by official vessels, drones or helicopters shall not be grounds for requesting redress by a boat. This changes RRS 60.1(b).

16. [DP] SUPPORT AND SPECTATOR VESSELS

16.1 No private coach vessels are allowed on the water.

16.2 Spectator vessels are allowed but they must register with the organising authority and agree to provide extra on the water safety if deemed necessary or called on by the Organising Authority.

16.3 Contact between sailors and spectators on the water is prohibited.

16.4 Spectator vessels shall stay outside areas where boats are racing. Such areas are defined as:

- not closer than 50m to any boat racing (except a boat in distress or requiring assistance);
- within 50m of the starting line and marks from the time of the preparatory signal until all boats have left the starting area or the Race Committee signals a postponement, general recall or abandonment;
- between any boat racing and the next mark of the course.

16.5 On the water there shall be no contact between volunteers helping on safety and mark laying vessels and competitors unless providing safety support.

16.6 The Organising Authority will provide official gear vessels to carry sailors' food bags and spares.

16.7 Personal gear and or food (securely bagged and identified) may be dropped off on a Gear Vessel stationed off the starboard side of the race committee signal boat before the preparatory signal for each class. Any trash shall be placed on the same Gear vessel.

16.8 Gear shall not be placed on any vessel other than the Gear vessels.

16.9 When the race committee displays flag V with one sound, all official vessels, support vessels and spectators vessels shall monitor the race committee radio channel (VHF channel 77) for search

and rescue instructions. The race committee will announce 'Flag Victor' using the designated VHF Channel.

17. [DP] [NP] IDENTIFICATION AND ADVERTISING

17.1 When provided by the Organizing Authority, boats or competitors shall carry, display or wear the following as instructed:

- 17.1.1 Coloured bibs for Event leaders (1st, 2nd and 3rd);
- 17.1.2 Coloured dots on the mainsail for Event leaders (1st, 2nd, 3rd);
- 17.1.3 Event advertising;
- 17.1.4 Cameras and sound equipment; and
- 17.1.5 Tracking and timing system equipment.

18. PROTEST COMMITTEE, PROTESTS, PENALTIES AND REQUESTS FOR REDRESS

- 18.1 Protest forms are available at the Race Office, located upstairs in the clubhouse and requests for redress or reopening shall be delivered there within the appropriate time limit.
- 18.2 The protest time limit for each fleet is 60 minutes after the last boat has finished the last race of the day or "AP over A" or "N over A" is displayed. Notices will be posted within 30 minutes of the protest time limit to inform competitors of hearings in which they are parties or named as witnesses. Hearings will be held in the protest room, located in the dinghy park, beginning at the time posted. Hearings may be scheduled to begin up to 30 minutes before the end of protest time.
- 18.3 Notices of protests by the Race Committee or Protest Committee will be posted to inform boats under RRS 61.1(b).
- 18.4 A list of boats that have been penalized under Appendix P for breaking RRS 42 and under SI 22.9 will be posted.
- 18.5 For the purpose of RRS 64.3(b) the 'authority responsible' is Yachting New Zealand's Talent Development Manager
- 18.6 Penalties for breaches of class rules, RRS 55 or rules in the NoR and SIs marked [DP], are at the discretion of the Protest Committee. A boat may accept a discretionary penalty before a hearing concerning the same incident by completing a form available at the Jury Office.
- 18.7 Breaches of rules in the SIs marked [NP] will not be grounds for a protest by a boat. This changes RRS 60.1(a).
- 18.8 For breaches of the SIs marked [SP], the Race Committee may apply a standard penalty without a hearing. A list of these breaches and the associated standard penalties will be posted on the Official Notice Board. However, the Race Committee may protest a boat when they consider the standard penalty to be inappropriate. This changes RRS 63.1 and Appendix A5.
- 18.9 On the last scheduled day of racing, a request for reopening a hearing shall be delivered
- a) within the protest time limit if the requesting party was informed of the decision on the previous day;
 - b) no later than 30 minutes after the requesting party was informed on the decision on that day.
- This changes RRS 66.
- 18.10 On the last scheduled day of racing, a request for redress based on a jury decision shall be delivered no later than 30 minutes after the decision was posted. This changes RRS 62.2.

19. [DP] RADIO COMMUNICATION

A boat shall neither make radio transmissions while racing nor receive radio communications not available to all boats, except in an emergency or when using equipment provided by the Race Committee. This restriction also applies to mobile telephones.

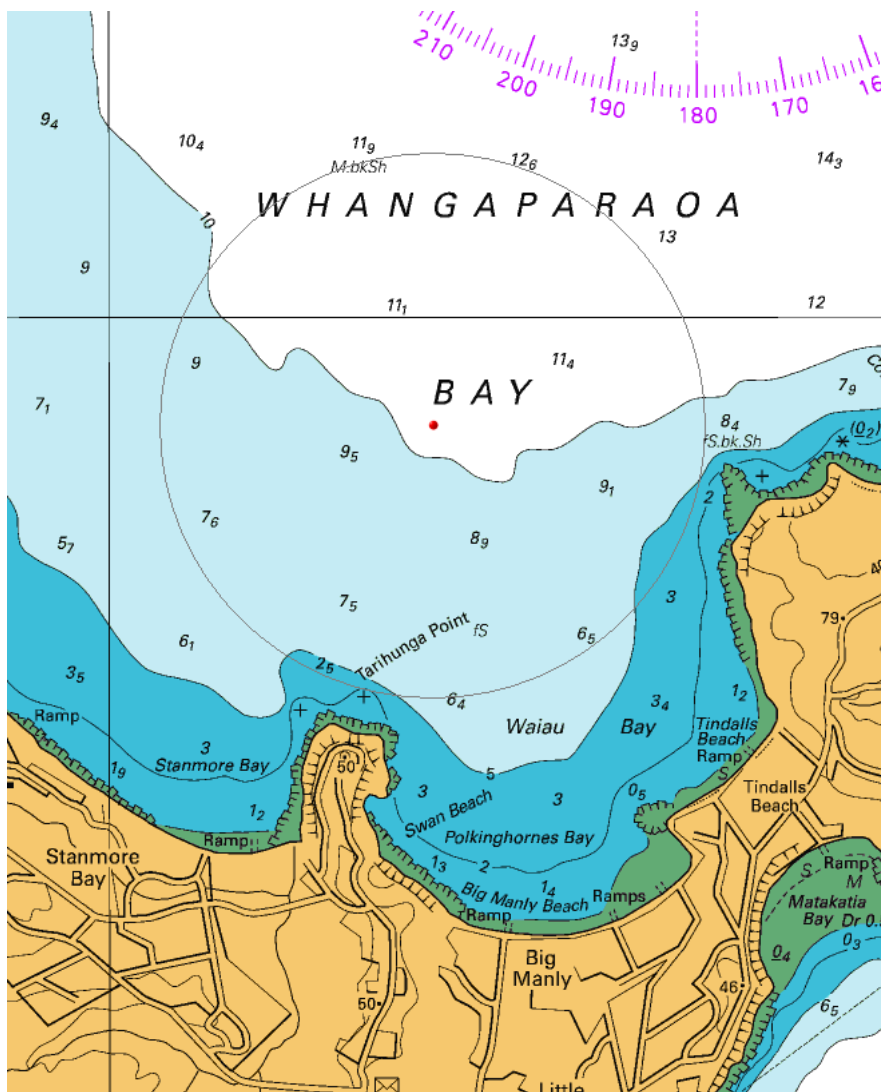
20. [DP] TRASH DISPOSALS

Trash may be placed aboard gear vessels.

21. PRIZES

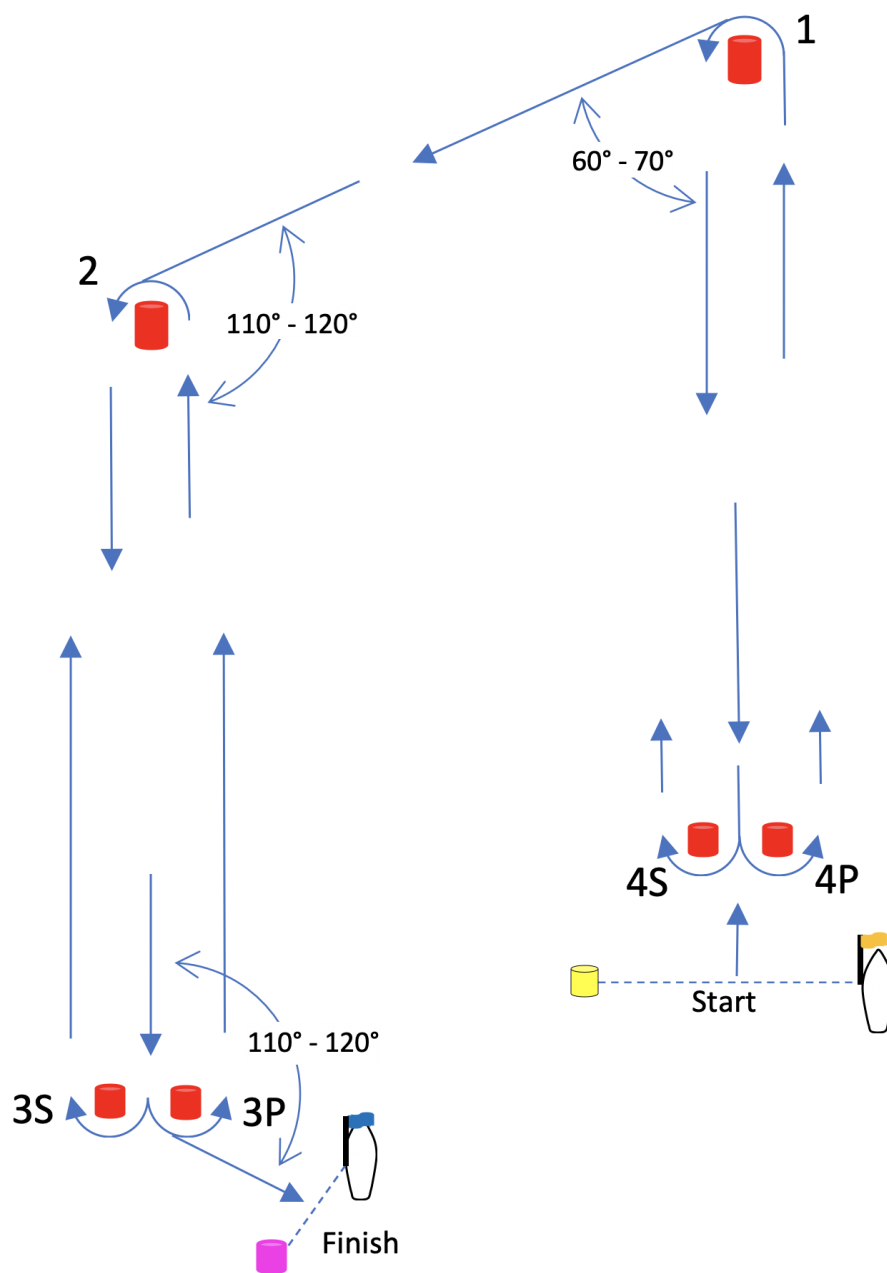
Medals will be awarded to the top 3 boats in each event.

ADDENDUM A COURSE AREA



Area Centre	Area Diameter
36° 36.30' S 174° 45.10' E	1.5 nm

Course Illustration – Trapezoid



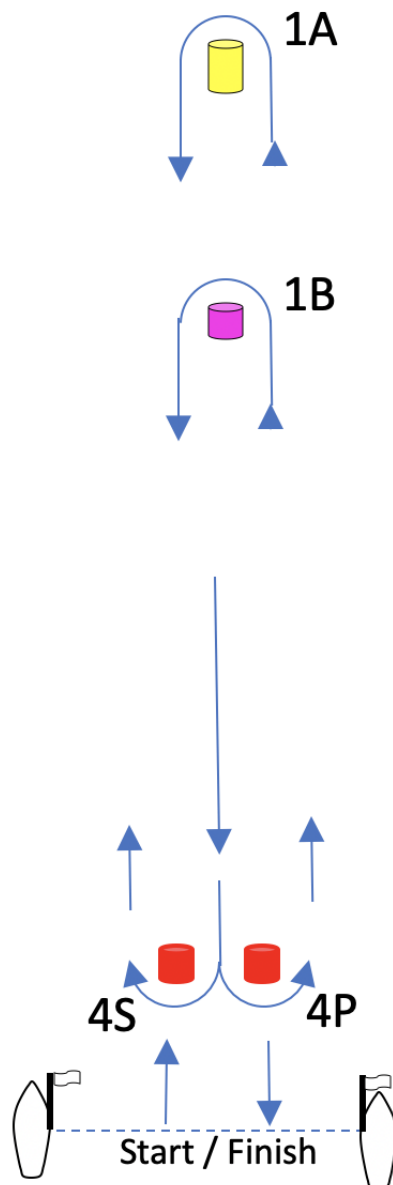
Course: Inner Trapezoid

Signal	Mark Rounding Order
I2	Start – 1 – 4s/4p – 1 – 2 – 3p – Finish
I3	Start – 1 – 4s/4p – 1 – 4s/4p – 1 – 2 – 3p – Finish
I4	Start – 1 – 4s/4p – 1 – 4s/4p – 1 – 4s/4p – 1 – 2 – 3p – Finish

Course: Outer Trapezoid

Signal	Mark Rounding Order
O2	Start – 1 – 2 – 3s/3p – 2 – 3p – Finish
O3	Start – 1 – 2 – 3s/3p – 2 – 3s/3p – 2 – 3p – Finish
O4	Start – 1 – 2 – 3s/3p – 2 – 3s/3p – 2 – 3s/3p – 2 – 3p – Finish

Course Illustration – Leeward



Course: Leeward finish

Signal	Mark Rounding Order
LB2	Start – 1B – 4s/4p – 1B – Finish
LB3	Start – 1B – 4s/4p – 1B – 4s/4p – 1B – Finish
LB4	Start – 1B – 4s/4p – 1B – 4s/4p – 1B – 4s/4p – 1 – Finish
LA2	Start – 1A – 4s/4p – 1A – Finish
LA3	Start – 1A – 4s/4p – 1A – 4s/4p – 1A – Finish
LA4	Start – 1A – 4s/4p – 1A – 4s/4p – 1A – 4s/4p – 1A – Finish

Note 1: The relative position of Mark 1A and 1B may be different than shown in the diagram. 1B may be to windward of mark 1A

Note 2: The port end of the starting line may be a yellow buoy, and the starboard end of the finishing line may be a pink buoy.

ADDENDUM C - SCHEDULE OF RACES AND TIME OF WARNING SIGNAL.

Fleet	Class	Total Races	Wednesday 7 October 2020		Thursday 8 October 2020		Friday 9 October 2020		Saturday 10 October 2020	
			Time	Number of races	Time	Number of races	Time	Number of races	Time	Number of races
Boy's and Girl's Two Person Dinghy	420	12	1300	2	1400	4	1100	4	1230	2
Boy's and Girl's One Person Dinghy	Laser Radial	12	1305	2	1405	4	1105	4	1235	2
Boy's and Girl's Skiff	29er	12	1310	2	1410	4	1110	4	1240	2
Mixed Multihull	Narca 15	12	1315	2	1415	4	1115	4	1245	2
Boy's and Girl's Windfoil	IQFoil	14	1500	3	1100	4	1400	4	1035	3
Boy's and Girl's Kitefoil	International Kiteracing class and foil	14	1505	3	1105	4	1405	4	1035	3

Standard Penalties

Instruction	Penalty for each infringement
2.4 Failure to check-out	1 point
2.4 Failure to check-in	1 point
4.7 Boat not kept in dinghy park	1 point
4.7 Leaving the beach before D displayed	1 point