



2020 NZ SAILCRAFT RS FEVA NATIONAL CHAMPIONSHIP NOTICE OF RACE

28TH TO 29TH MARCH 2020

Narrow Neck Beach, Devonport, Auckland
The organising authority is the Wakaterere Boating Club

NB: The notation '[DP]' in a rule in the Notice of Race or Supplementary Sailing Instructions (SSI) means that the penalty for a breach of that rule may, at the discretion of the protest committee, be less than disqualification.

1. RULES

- 1.1 The regatta will be governed by the rules as defined in the *Racing Rules of Sailing*
- 1.2 The Yachting New Zealand Safety Regulations Part 1 shall apply
- 1.3 For protests where only a Rule of Part 2, or Rule 31 is alleged to have been broken an arbitration hearing will be offered prior to any formal hearing.
- 1.4 The sailing instructions will consist of the instructions in RRS Appendix S, Standard Sailing Instructions, and supplementary sailing instructions that will be on the official noticeboard and on the website at www.wakaterere.org.nz.

2. ELIGIBILITY

- 2.1 The regatta is open to all boats of the RS Feva Class.
- 2.2 Entry is via <http://www.wakaterere.org.nz/page/2020-nz-sailcraft-rs-feva-national-championship> and completing an online entry and paying the entry fee via your preferred method of payment as outlined on the website. Note: Completion of online entry and payment must be made by the closing date to constitute a valid entry otherwise the entry will be deemed as a late entry with the appropriate late entry fee of \$50.00 (NoR 4.3 below).
- 2.3 Boats intending on racing must enter by no later than 2200 hrs on Wednesday 25th March 2020.
- 2.4 Late entries may be accepted up until 2000 hrs on Friday 27th March 2020, at the discretion of the Organising Authority.
- 2.5 A minimum of six (6) entries are required by the entry closing date of 27th March 2020 for the regatta to go ahead.

- 2.6 To be eligible to compete in this event each entrant and crew shall be a financial member of a club recognised by the entrant and crew's national authority.

Proof of affiliated club membership to be presented at registration.

- 2.7 To be eligible to compete in this event each sailor shall be a financial member of the NZ Feva Association. This can be completed at the time of registration. Alternately, overseas entrants may provide proof of current membership of their National Feva Class Association.

3. ADVERTISING

- 3.1 Boats may be required to display advertising chosen and supplied by the organising authority. If this rule is broken, World Sailing Regulation 20.9.2 applies. [DP]

4. ENTRY FEE

- 4.1 The entry fee is \$80.00 per boat.
4.2 Membership of the NZ RS Feva Association is an additional \$20.00 per sailor.
4.3 Late entries, if accepted, shall be accompanied by a Late Entry surcharge of \$50.00.

5. SCHEDULE

- 5.1 Registration:

Friday 27th March 1700-2000 hrs

Saturday 28th March 0800-0900 hrs

- 5.2 Equipment inspection and event measurement:

Saturday 28th March 0800-0900 hrs

- 5.3 Dates of racing and number of races:

Day:	Date:	Number of races per day:	Target time for each race:
Saturday	28 th March	Four (4) races back-to-back	30 minutes
Sunday	29 th March	Four (4) races back-to-back	30 minutes

- 5.4 Briefing will take place before racing on Saturday at 0930 hrs.
5.5 The scheduled time of the warning signal for the first race each day is 1030 hrs.
5.6 On the last scheduled day of racing no warning signal will be made after 1530 hrs.

6. SAILING INSTRUCTIONS

- 6.1 The Supplementary Sailing Instructions will be available at the race briefing and via the website www.wakatere.org.nz from the 20th March 2020.
6.2 Paper copies will not be issued to competitors.

7. VENUE

- 7.1 The host club is Wakatere Boating Club, Narrow Neck Beach, Devonport, Auckland.
7.2 The racing will take place on the course area, as shown in Attachment A, on the waters off Narrow Neck Beach, North Shore.

8. COURSES

8.1 The courses will be outlined in the Sailing Instructions

9. PENALTY SYSTEM

9.1 For all classes rule 44.1 is changed so that the Two-Turns Penalty is replaced by the One-Turn Penalty.

10. SCORING

10.1 Eight (8) races are scheduled.

10.2 Five (5) races are required to be completed to constitute a series.

10.3

- a. When fewer than five (5) races have been completed, a boat's series score will be the total of her race scores.
- b. When five (5) to eight (8) races have been completed, a boat's series score will be the total of her race scores excluding her worst score.

10.4 Races will be scored as a single fleet, but may be split out into the following sections;

- Youth
- Junior
- Female
- Open

11. SAFETY

11.1 Competitors shall wear a life jacket or other adequate personal buoyancy at all times when afloat.

11.2 Wet suits and dry suits do not constitute adequate personal buoyancy.

11.3 All support and safety boat crews are required to wear life jackets under the Auckland City life jacket By Law.

12. LAUNCHING

12.1 All boats will be required to launch and retrieve from Narrow Neck Beach.

13. COACH AND SUPPORT BOATS

13.1 Support boats are welcome but must stay outside 50m from the fleet except before the warning signal and after the finish. In a case of emergency, they may be asked to assist. All support boats are required to register via the online form on the website: <http://www.wakatere.org.nz/page/2020-nz-sailcraft-rs-feva-national-championship>

14. MEASUREMENT AND INSPECTIONS

14.1 Each boat shall be presented for a check prior to racing on the first day (NoR 5.2 above).

14.2 A boat shall comply with RRS 78.1 at all times, except that the country code (Eg: NZL) is not required.

14.3 Beach trolleys shall be prominently marked with the boat's sail number.

14.4 In addition, spot measurement and safety checks may be conducted at any time throughout the regatta.

14.5 Dispensation to use non-class sails that meet measurement requirements on yacht club owned boats may be granted by the Race Committee.

15. RADIO COMMUNICATIONS

15.1 Except in an emergency, a boat that is racing shall not make voice or data transmissions and shall not receive voice or data communication that is not available to all boats. This restriction also applies to mobile telephones. [DP]

16. TITLE & PRIZES

16.1 National Titles:

- (a) The National Championship title will be awarded to the highest placed boat where the helm and crew are aged 18 or under (as at 31 December 2020).
- (b) A Female National Championship title will be awarded to the highest place boat where the helm and crew (both female) are aged 18 or under (as at 31 December 2020).

16.2 Prizes will be given as follows:

- Open Fleet: The highest placed boat that does not meeting the age criteria for both sailors in 16.1.
- Junior Fleet: The highest place boat where both the helm and crew are aged 13 or under (as at 31 December 2020).

16.3 Other prizes may be given at the discretion of the Class Association or Organising Authority.

17. DISCLAIMER OF LIABILITY

17.1 Competitors participate in the regatta entirely at their own risk. See RRS 4, Decision to Race. The organising authority will not accept any liability for material damage or personal injury or death sustained in conjunction with or prior to, during, or after the regatta.

18. RIGHTS TO USE NAME & LIKENESS

18.1 By participating in the event, a competitor automatically grants to the Organising Authority and the sponsors of the event, the right in perpetuity, to make, use and show, from time to time and at the discretion, any motion pictures, still pictures and live, taped or film television and other reproductions of him/her during the period of the competition for said event in which the competitor participated and in all material related to the said event without compensation.

19. USE OF DRONE FOR MEDIA

19.1 All those who take part in the regatta as competitors as well as support crew or spectators agree to be overflown by a drone during the duration of the event, this includes your person and your property (boats).

20. FURTHER INFORMATION

20.1 For further information, please contact:

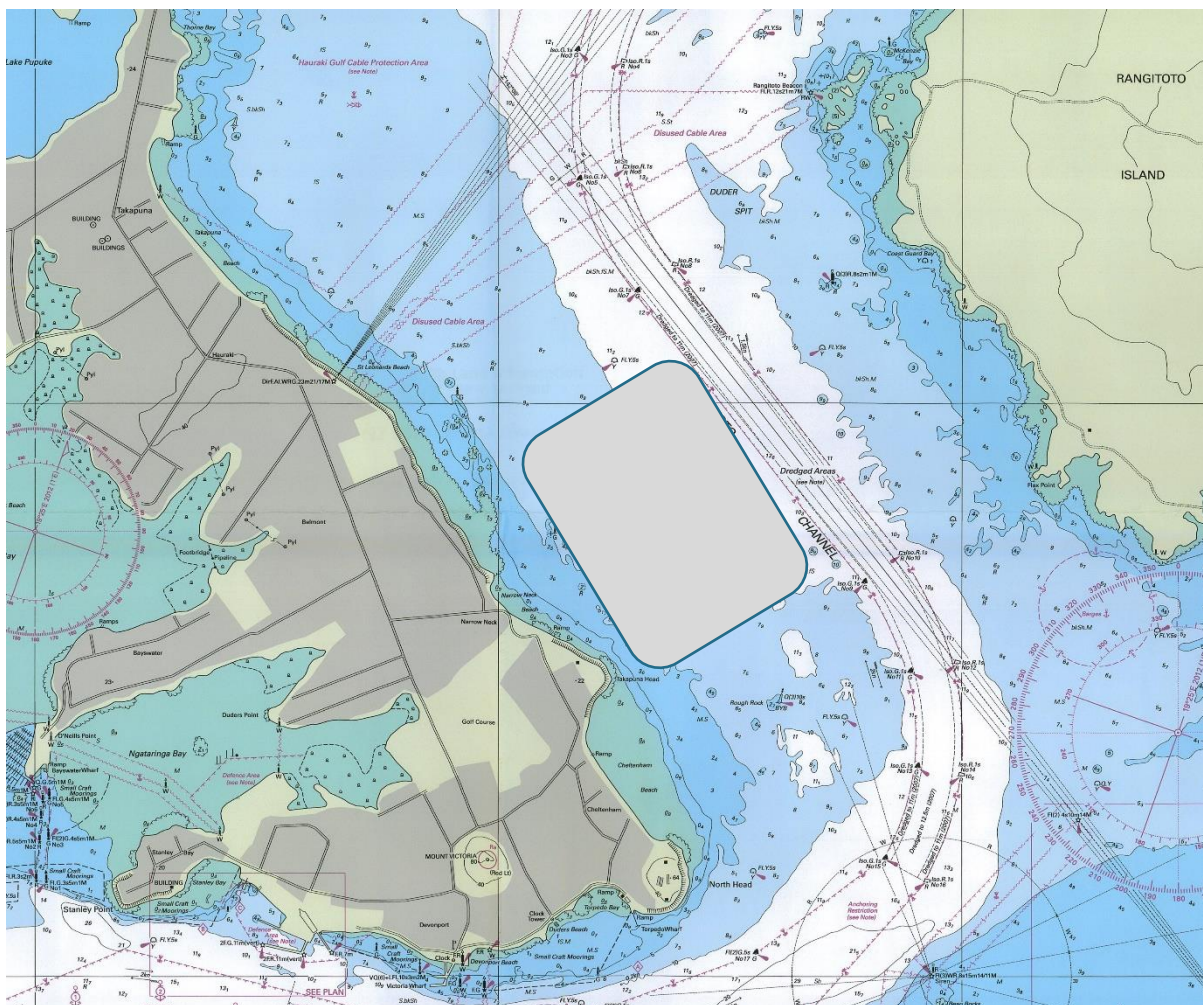
Simon Probert

021484656

Email wakatore.commodore@gmail.com

Website www.wakatore.org.nz

ATTACHMENT A



Approximate Racing Area.