

GHYC Summer Cruising Series 2018 - 19

Organising Authority Gulf Harbour YC
Combined races in conjunction with Weiti BC

Weiti Boating Club

Fairhaven Walk Whangaparaoa.
P: (09) 424 5905 W: weiti.co.nz

Gulf Harbour Yacht Club

1299 Laurie Southwick Pde, Gulf Harbour.
P: (09) 424 2118 W: ghyc.co.nz

Notice of Race and Sailing Instructions

1.0 Rules

- 1.1 The regatta will be governed by the 'rules' as defined in *The Racing Rules of Sailing*.
- 1.2 For Keel Yachts the YNZ Safety Regulations Part II, Category 4 shall apply.
- 1.3 For Trailer Yachts the YNZ Safety Regulations Part V, Category A shall apply.
- 1.4 All boats shall carry or tow a dinghy (fully inflated or rigid)
- 1.5 All yachts must be equipped with a VHF radio capable of transmitting and receiving on all channels.
- 1.6 No spinnakers, Code zeros or extras may be set. Extras are defined as sails not normally used to advantage to windward. Headsails may be boomed out using spinnaker booms but shall only be carried on a permanent load bearing forestay with only one headsail per forestay.
- 1.7 RRS 52 will be changed as follows: Autohelms, electric winches are allowed
- 1.8 RRS Appendix T will apply (Arbitration)

2.0 Eligibility & Entry

- 2.1 Entries will be accepted from Keel Yachts and Trailer Yachts registered with YNZ and whose owners/skippers are financial members of a yacht club affiliated to YNZ.
- 2.2 GHYC & WBC reserve the right to accept or refuse any entry.
- 2.3 Entries must be made to either the Gulf Harbour Yacht Club or the Weiti Boating Club using the online entry form on the Club's website, with payment of the designated entry fee. **Entrants must provide a mobile phone number that they can be contacted on while racing.**
- 2.4 Only series entrants will be eligible for series points. Entries for individual races must be received and fees paid by 1600 hrs on the evening preceding a scheduled race day
Entry Fees: \$100 for series or \$15 per race \$120 for late series entry
- 2.5 Series entries to be received by 1600 hrs on Friday 12 October 2018. Late series entries will be accepted up to 1600 hrs Friday 9 November 2018 subject to payment of the late fee. Any races completed prior to both a completed entry form and payment being received will not be eligible for series points and will be scored DNC.

3.0 Notices to Competitors

- 3.1 Notices may be posted on one or more of the following:
 - 3.1.1 The Weiti Boating Club Website weiti.co.nz
 - 3.1.2 The Gulf Harbour Yacht Club website ghyc.co.nz
 - 3.1.3 Advised by Txt to the mobile number given in 2.3 above.
 - 3.1.4 Advised by email to the email address loaded with the online entry form
 - 3.1.5 On the official notice boards located at the GHYC & WBC clubrooms.

4.0 Changes to Sailing Instructions

- 4.1 Any change to the sailing Instructions will be posted at least 2 hours prior to the scheduled start of the day's racing, on the day it will take effect.
- 4.2 Notices of cancellation will endeavor to be sent by email and /or Txt to the email address /mobile number given in 2.3 above, at least 1 hour prior to the scheduled start of the days racing

5.0 Schedule of Races

Race	Day	Date	Tentative Destination (refer 10.2 below)	Combined races	Control	Warning Signal
1	Saturday	20/10/2018	Kawau			9:55
2	Saturday	10/11/2018	Motuihe	Combined (1)	GHYC	9:55
3	Saturday	24/11/2018	Waiheke	Combined (2)	Weiti	9:55
4	Saturday	8/12/2018	Kawau Christmas	Combined (3)	GHYC	9:55
5	Saturday	26/01/2019	Anniversary Weekend - Mahurangi	Combined (4)	Weiti	9:55
6	Saturday	23/02/2019	Waiheke	Combined (5)	GHYC	9:55
7	Sunday	10/03/2019	Kawau to Gulf Harbour			10:55
8	Saturday	23/03/2019				9:55
9	Saturday	6/04/2019				9:55
10	Friday	19/04/2019	Easter - Waiheke	Combined (6)	Weiti	9:55
Non Points races	Sunday	27/01/2019	GHYC, Milford, Weiti race at Mahurangi		TBA	TBA
	Saturday	9/03/2019	GHYC, Sandspit and Weiti race at Kawau Bay		Sandspit	TBA

6.0 Class Flag

- 6.1 All boats will race in one class and fly a White class flag.

7.0 Racing Area

- 7.1 The races will be held on the waters of the Hauraki Gulf and Waitemata Harbour.

8.0 Race control

- 8.1 The Race Committee shall either provide a start vessel or designate one boat participating in the race as the **Race Start Vessel** and notify all entrants accordingly.
- 8.2 The Race Committee shall designate one boat participating in the race as the **Committee Boat** for the race and notify all entrants accordingly. Race control will move from the Race Start Vessel to the Committee Boat following completion of the start sequence.
- 8.3 A boat that retires from a race shall notify the Committee Boat immediately. Acknowledgement is required from the Committee Boat.
- 8.4 The Race Committee may provide a **Race Finish Vessel**. If so, all entrants will be notified accordingly that the finish procedure will be as per 12.2 below.

9.0 Radio Communications

- 9.1 The race channel to be used is VHF Radio Ch.77. All boats must maintain a constant radio watch on

this channel.

- 9.2 For all WBC controlled races, the call sign for the Race Start Vessel and the Committee Boat is "WEITI Race Control".
- 9.3 For all GHYC controlled races, the call sign for the Race Start Vessel and the Committee Boat is "Gulf Harbour Race Control".

10.0 Course to be sailed

- 10.1 The Courses are detailed in Addendum B.
- 10.2 On the evening prior to the race, and not later than 20:30 hours, the course and destination will be displayed on the Club Notice Board along with the nominated starting procedure (as in 11.1.1 below)
- 10.3 The course may be cancelled/changed/ or shortened on the day of the race due to weather conditions. Any changes may be displayed on the Club Notice board no later than 0900 hrs on the day of the race
- 10.4 The Committee Boat may change or shorten the course after the start by advising over VHF Radio Ch 77 using call sign "Gulf Harbour Race Control". For combined races this will be determined by the controlling club for that race as in 9.2 and 9.3 above. Such announcements will be made at 15 and 45 minutes past the hour for the duration of the race. This changes RRS 32.

11.0 The Start

- 11.1 Start line
 - 11.1.1 For GHYC races:

(**Procedure 1**) the start line will be between a staff displaying an orange flag on the Race Start Vessel at the starboard end and the South East edge of Kotunui Island at the port end. This is detailed in addendum A.

(**Procedure 2**) The start line is a transit line between the outer Gulf Harbour Marina RED marker (to Port) and the Southern face of Kotanui Island (Frenchman's Cap) (to Starboard). There will NOT be a start boat and there will NOT be any sound signals. The race will start at 1000 hours (GPS Time) This changes RRS 26.

For GHYC controlled combined races, the start line will be as described in 11.1.1 procedure 1 above.
 - 11.1.2 For WBC controlled combined races, the start line will be in the vicinity of Arkles Bay. The starting line will be between a staff displaying an orange flag on the Race Start Vessel at the starboard end and an orange conical buoy at the port end. This is detailed in addendum A.
- 11.2 All races will be started according to RRS 26 with the warning signal for races as per the table in 5.0 above.
- 11.3 A boat that does not start within 10 minutes after her starting signal will be scored DNS (Did Not Start). This changes RRS A4 and A5
- 11.4 No engines shall be used after the preparatory signal for the race is given.
- 11.5 If any boat or part of a boat, or crew, is on the course side of the starting line at the starting signal and is identified, the Race Start Vessel shall attempt to broadcast her number on VHF Radio Ch 77. Failure to make a broadcast or to time it accurately will not be grounds for redress. This changes RRS 62.1 (a). (Redress)

12.0 The Finish

- 12.1 The finishing line will be as described in Addendum B.
- 12.2 If a Race Finish Vessel has been advised as in 8.4 above, then this will be positioned on the designated finish line such that boats may cross on either side.
- 12.3 In the absence of a Race Finish Vessel being on station, all boats shall record their own finish time in hours, minutes and seconds (preferably using a GPS) and advise the Committee Boat of their finish time as soon as practicable after finishing the race.
- 12.4 Any boat not having advised its finish time after 90 minutes have elapsed from the last boat finishing shall be recorded DNF (Did Not Finish).

13.0 Time limits

- 13.1 The time limits to be applied for each race format are as below:

Race Format	Time limit for first boat	Time allowed for other boats
Cruising - Up to 20 miles	5 hours	+ 2 hours
Cruising - More than 20 miles	7 hours	+ 2 hours

- 13.2 If no boats finish within the "Time limit for first boat" then the race will be abandoned.
- 13.3 Conditional upon 13.2 above, a boat failing to finish within the "time allowed for other boats" will be scored DNF (Did Not Finish). This changes RRS 35 and A4.1 (*Time Limit and Scores and Low Points and Bonus Points System*).
- 13.4 If a course is shortened, the original time limit remains. If the destination is changed (i.e. a new course number is advised), then the time limit for the new course will apply.
- 13.5 The Committee Boat may change or shorten the course after the start by advising over VHF Radio Ch 77. Such announcements will be made at 15 and 45 minutes past the hour for the duration of the race. This changes RRS 32.

14.0 Protests and requests for Redress

- 14.1 For protests where only a rule of part 2 (When boats Meet) is alleged to have been broken, an arbitration hearing will be offered prior to any hearing.
- 14.2 A protest shall be lodged in the appropriate format (forms are available from the Club House or YNZ Website) within the protest time limit and delivered to a member of the Sailing Committee.
- 14.3 The time limit for lodging a protest is 120 minutes after the last boat has finished

15.0 Handicapping

- 15.1 Handicapping for GHYC only races will be in accordance with the GHYC Handicapping system. Handicapping for Combined races will be in accordance with the WBC Handicapping system.
- 15.2 Initial handicaps will be agreed between the two clubs. One-off adjustments may be made during the series where required, upon agreement between both clubs.

16.0 Scoring

- 16.1 Five races are required to be completed to constitute a series.
- 16.2 The best six (6) boat scores will count towards series
- 16.3 RRS Appendix A9 will be used



Weiti Boating Club (INC)
PO Box 207 Whangaparaoa



17.0 Safety Regulations

- 17.1 Skippers are required to maintain a written list on board of all crew for the day (including the skipper), their next-of-kin or contact person, and a contact phone number. All crew must be made aware of the location of this list before departing their marina / mooring.
- 17.2 All entrants are required to register with the Race Start Vessel via VHF Radio Ch 77, before the warning signal advising the boat name and the number of people on board.
- 17.3 All skippers must take responsibility to ensure at all times their boat complies with the relative safety regulations in Sailing Instructions Rule 1.0 above
- 17.4 Boats may be inspected for compliance with the safety regulations at the discretion of the Race Committee

18.0 Prizes

- 18.1 Day prizes will be awarded on the designated beach as soon as practicable after each race.
- 18.2 Series results will be advised as soon as practicable following the completion of Race 10.
- 18.3 Series prizes will be presented during the GHYC Summer prizegiving.
- 18.4 The number of prizes awarded may be dependent on the number of boats participating

1 – 3 boats	1 st prize
4 – 6 boats	1 st and 2 nd prize
7 plus boats	1 st , 2 nd and 3 rd prize

19.0 Insurance

- 19.1 Each participating boat shall be insured with valid Third-Party insurance – liability insurance with a minimum cover of \$5M per incident or equivalent

20.0 Disclaimer of Liability

- 20.1 Competitors participate in the regatta entirely at their own risk. See RRS 4, Decision to Race. The responsibility for a boat’s decision to participate in a race or to continue racing is hers alone.
- 20.2 The Organising Authority will not accept any liability for material damage or personal injury or death sustained in conjunction with, prior to, during, or after the regatta.

For further details contact the administrative office at either:

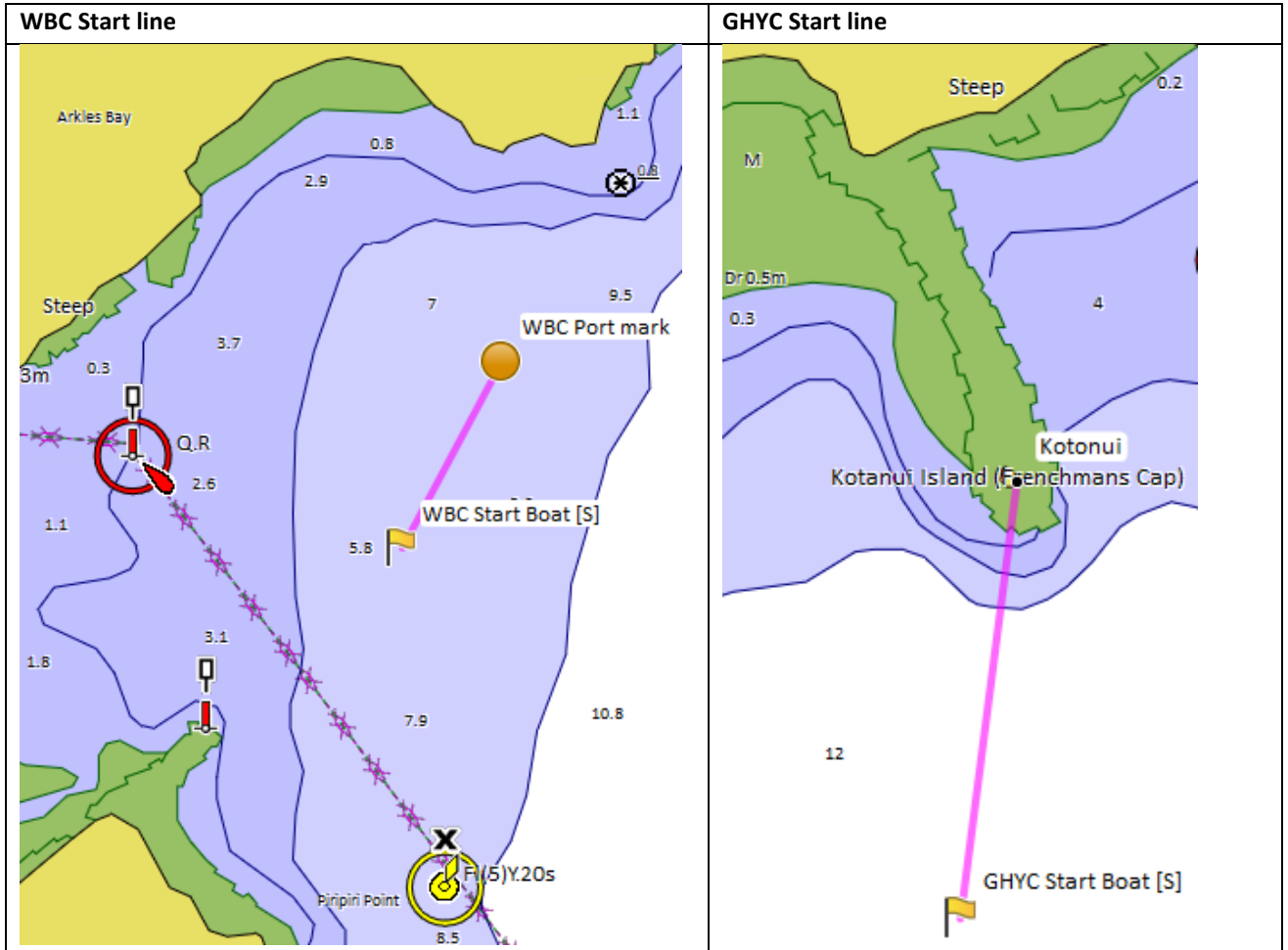
Weiti Boating Club

P: 09 424 5905
E: weiti@xtra.co.nz
W: weiti.co.nz

Gulf Harbour Yacht Club

P: 09 424 2118
E: admin@ghyc.co.nz
W: ghyc.co.nz

Addendum A: Start lines



Addendum B: Courses & Finish lines

1. Cruising courses: All courses – boats must pass to seaward of Wellington rock

<u>Course</u>	<u>Course destination</u>	<u>Course details</u>	<u>Nms</u>
1	Kawau – Bostaquet Bay	Navy Buoy (P)	14.8
2	Kawau via Motuora – Bon Accord	Navy Buoy (P), Motuora Is. (S), Motuketekete Is (P)	17.2
3	Kawau – Mansion House Bay	Navy Buoy (P), Passage Reef. (P), Beehive Is (P)	14.7
4	Islington Bay via Rakino Channel	Motutapu Is (S)	15.0
5	Mahurangi	Navy Buoy (P), Saddle Island (S)	13.2
6	Islington Bay	Rangitoto(P), Iliomona Rock (P)	13.9
7	Ponui – Shark Bay	Rakino (P), Waiheke (P)	23.8
8	Rakino Island – Woody Bay	Direct	9.6
9	Waiheke – Oneroa	Rakino (P)	14.5
10	Waiheke – Rocky Bay	Rakino (P)	18.9
11	Waiheke – Huruhi Bay	Rakino (P)	15.9
12	Motuihe Island	Rakino (P), Motutapu (S)	13.9
13	Waiheke – Man-O’ War Bay	Rakino (P), Waiheke(S)	26.1
14	Te Kouma	Rangipukea Is (S)	34.2

Note: see Cruising supplement for detailed finish line coordinates

2. Day courses: to be used in the event that conditions prevent one of the above courses being sailed. The start and finish line for these courses will be advised on the day.

<u>Course</u>	<u>Course details</u>	<u>Nms</u>
15	Start – Navy Buoy (S) – GH Buoy (S) – Finish	7.5
16	Start – Marine-Sth (P) – GH Buoy (P) – Finish	6.5
17	Start – Marine-Nth (P) – Torbay Buoy (P) – GH Buoy (P) – Finish	9.9
18	Start – Marine-Nth (P) – Marine-Sth (P) – GH Buoy (P) – Finish	7.4
19	Start – Marine-Nth (P) – Marine-Sth (P) – Navy Buoy (P) - GH Buoy (S) – Finish	13.4
20	Start – Navy Buoy (S) - Marine-Sth (S) - Marine-Nth (S) – GH Buoy (P) – Finish	13.7

Addendum B

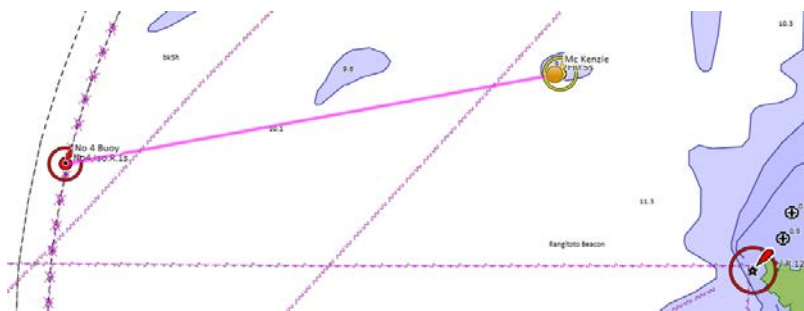
Provides detail of cruising destinations and coordinates of finish lines.

Alternative finish lines: The following may be used in the event that a race is shortened for some reason. Notice to entrants of a shortened course will be as advised in the sailing instructions.

1. Navy buoy finish – a line between the two yellow buoys.
2. McKenzie buoy finish – a line between the yellow McKenzie buoy (S36 46.721 E174 49.115) and the red channel marker No 4 (S36 46.805 E174 48.541). Bearing 59.5° Mag to McKenzie Buoy.



Weiti Boating Club (INC)
PO Box 207 Whangaparaoa



3. Rakino finish – as per course 8 finish

Day courses: to be used in the event that conditions prevent one of the above courses being sailed. The Start / Finish lines for these courses will be advised on the day with the after-race event being held in the clubrooms.

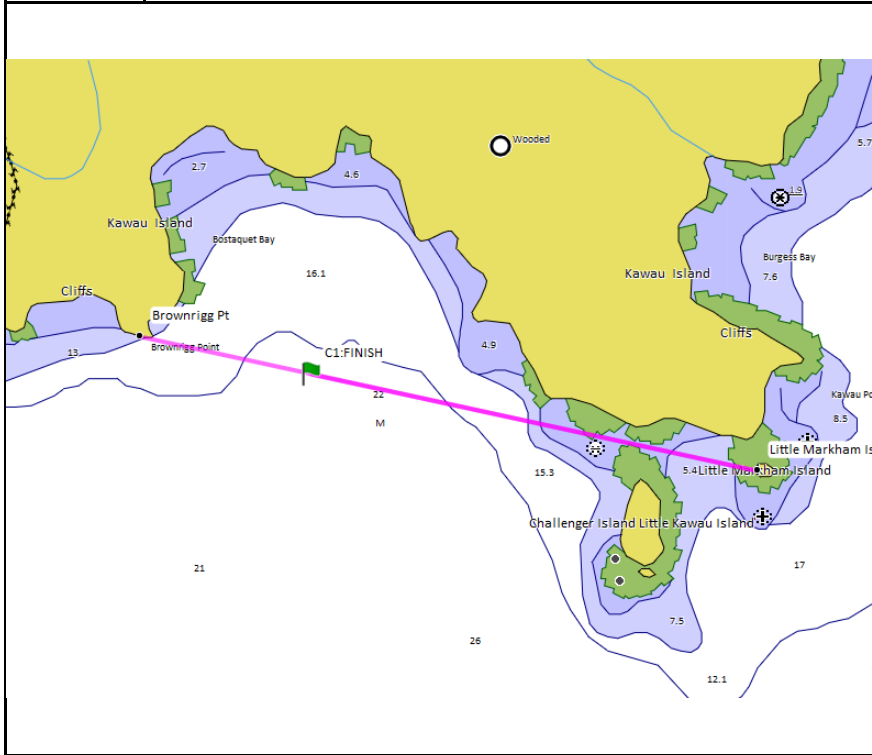
Course #	Course details	Nms
15 (9)	Start – Navy Buoy (S) - Southern Long Bay Marine marker (S) – Finish	13.2
16 (10)	Start – Southern Long Bay Marine marker (P) – Navy Buoy (P) - Finish	13.2
17	Start – Torbay Buoy (P) – GH Buoy (P) – Finish	9.7
18	Start –GH Buoy (S) – Torbay Buoy (S) - Finish	9.7
19	Start – Marine-Nth (P) – Marine-Sth (P) – Navy Buoy (P) - GH Buoy (S) –	13.4
20	Start – Navy Buoy (S) - Marine-Sth (S) - Marine-Nth (S) – GH Buoy (P) – Finish	13.7



Weiti Boating Club (INC)
PO Box 207 Whangaparaoa



Course 1 Kawau – Bostaquet Bay			
Distance	14.8 miles		
Time Limit:	5 hours		
Course	Navy Buoy [P], Finish 1		
BBQ	Bostaquet Bay		
Finish 1: Bostaquet Bay	[Shortened course: Navy Buoy finish]		
Transit	Brownrigg Point	36° 26.827 S	174° 51.306 E
	Little Markham Island	36° 27.071 S	174° 52.616 E
Waypoint	36° 26.896 S 174° 51.672 E		
Bearing	263.7° Mag. to Brownrigg Pt		
Chart	NZ 5227		





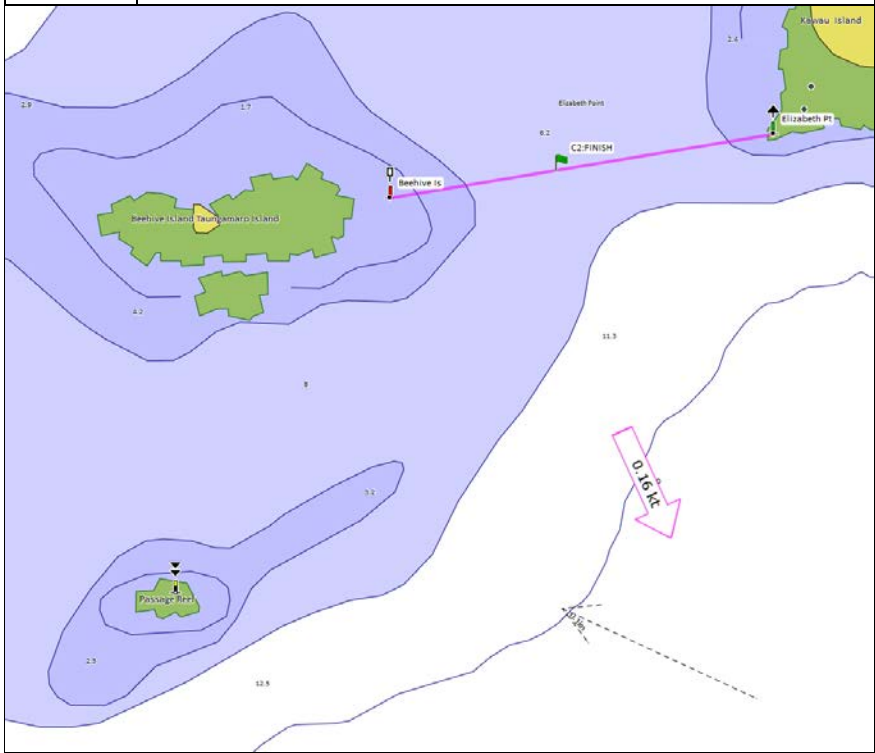
Weiti Boating Club (INC)
PO Box 207 Whangaparaoa



THE JOURNEY STARTS HERE



Course 2 Kawau via Motuora - Bon Accord		
Distance	17.2 miles	Time Limit: 5 hours
Course	Navy Buoy [P], Motuora Is. [S], Motuketekete Is [P], Finish 2	
BBQ	Mansion House Bay	
Finish 2: Elizabeth Point		
Transit	Beehive Is.	S36 27.095 E174 49.486
	Elizabeth Point	S36 27.029 E174 49.949
Waypoint	S36 27.067 E174 49.681	
Bearing	240.6° Mag to Beehive mark	
Chart	NZ5227	





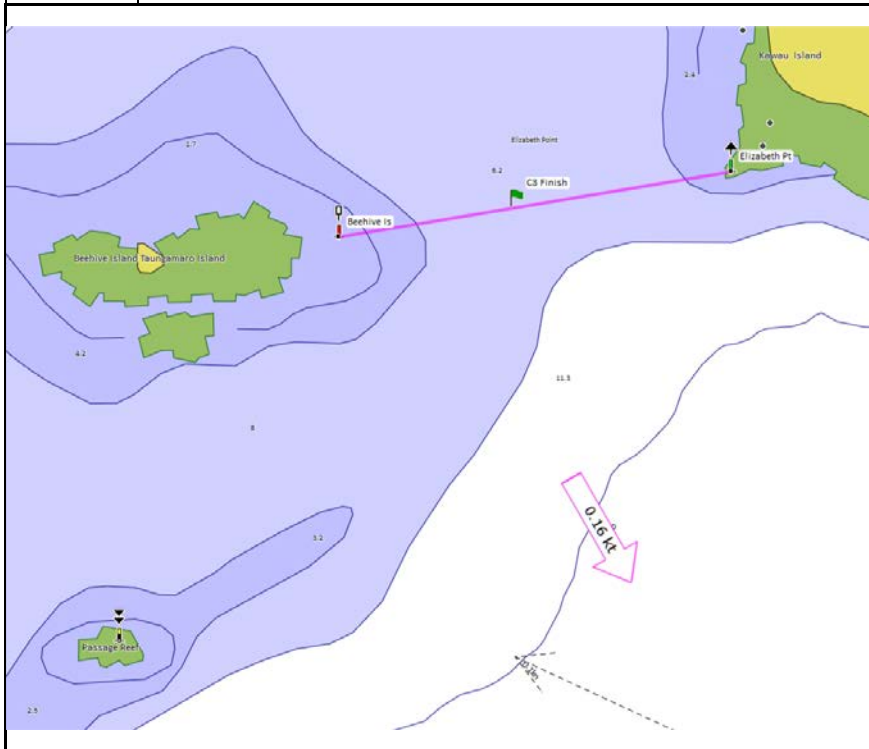
Weiti Boating Club (INC)
PO Box 207 Whangaparaoa



THE JOURNEY STARTS HERE



Course 3 Kawau – Mansion House Bay		
Distance	14.7 miles	Time Limit: 5 hours
Course	Navy Buoy [P], Passage Reef. [P], Beehive Is [P], Finish 3	
BBQ	Mansion House Bay	
Finish 3: Elizabeth Point	[Shortened course: Navy Buoy finish]	
Transit	Beehive Is.	S36 27.095 E174 49.486
	Elizabeth Point	S36 27.029 E174 49.949
Waypoint	S36 27.067 E174 49.681	
Bearing	240.6° Mag to Beehive mark	
Chart	NZ5227	





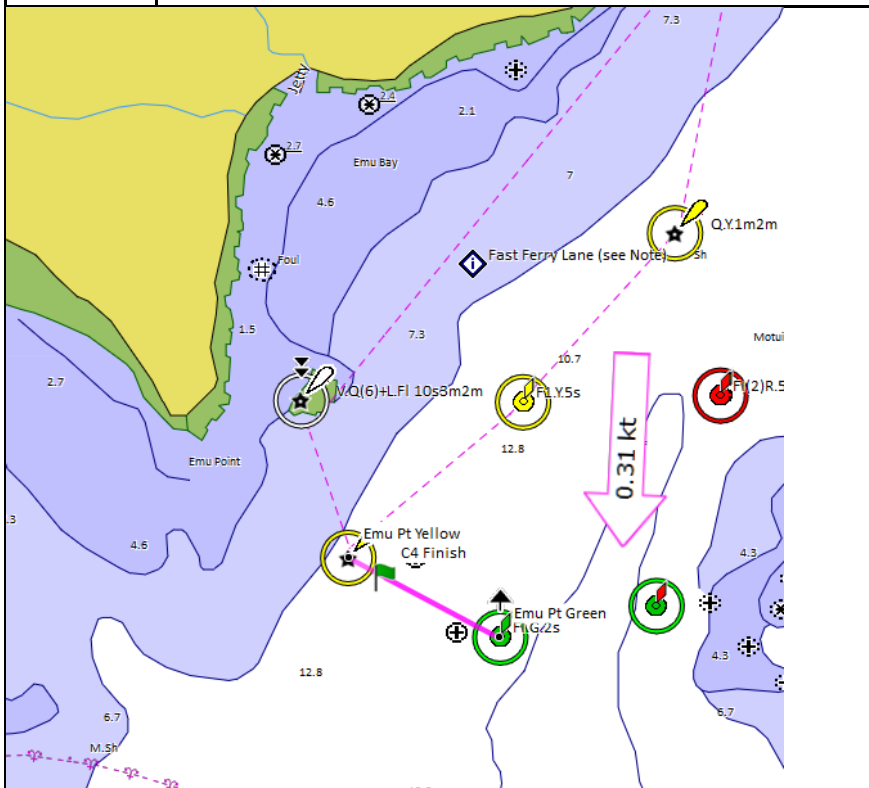
Weiti Boating Club (INC)
PO Box 207 Whangaparaoa



THE JOURNEY STARTS HERE



Course 4: Islington Bay via Rakino Channel			
Distance	15 miles	Time Limit: 5 hours	
Course	Motutapu Is [S], Finish 4		
BBQ	Decided on the day		
Finish 4: Islington Nthn		[Shortened course: Rakino finish]	
Transit	Emu Pt Green	36° 48.171 S	174° 55.300 E
	Emu Pt Yellow	36° 48.046 S	174° 55.027 E
Waypoint	36° 48.077 S 174° 55.094 E		
Bearing	280.2° Mag to Emu Pt Yellow		
Chart	NZ5324		

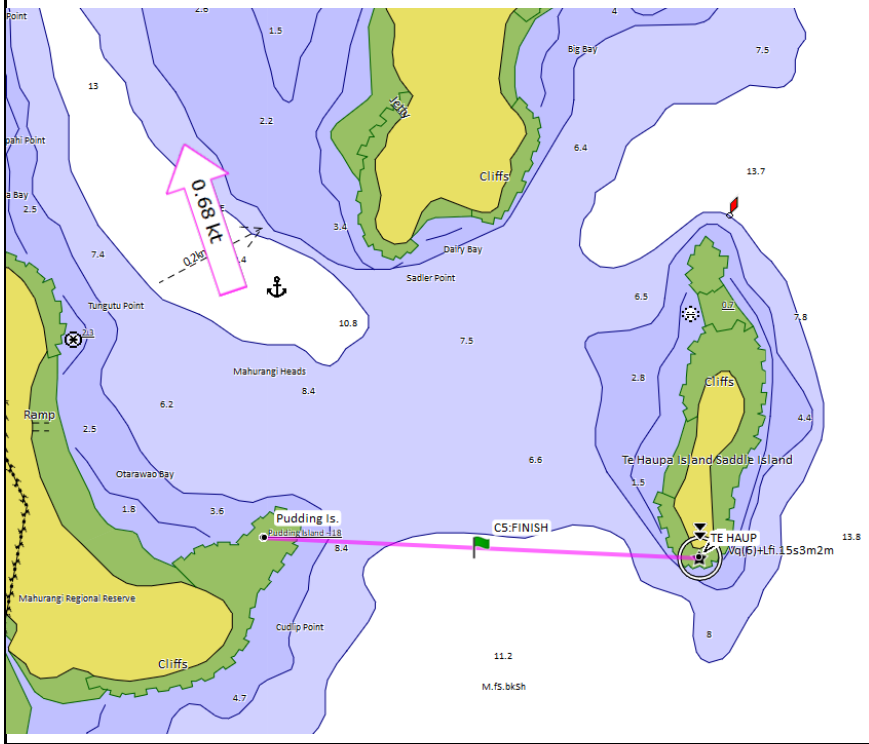




Weiti Boating Club (INC)
PO Box 207 Whangaparaoa



Course 5: Mahurangi			
Distance	13.2 miles	Time Limit: 5 hours	
Course	Navy Buoy [P], Te Haupa Is. (Saddle Is.) [S], Finish 5		
BBQ	Otarawao (Sullivan's) Bay		
Finish 5: Mahurangi		[Shortened course: Navy Buoy finish]	
Transit	Pudding Is	36° 30.828 S	174° 43.844 E
	Te Haupa Island Light	36° 30.900 S	174° 44.800 E
Waypoint	36° 30.846 S 174° 44.339 E		
Bearing	73.5° Mag to Te Haupa Is Light		
Chart	NZ5321		





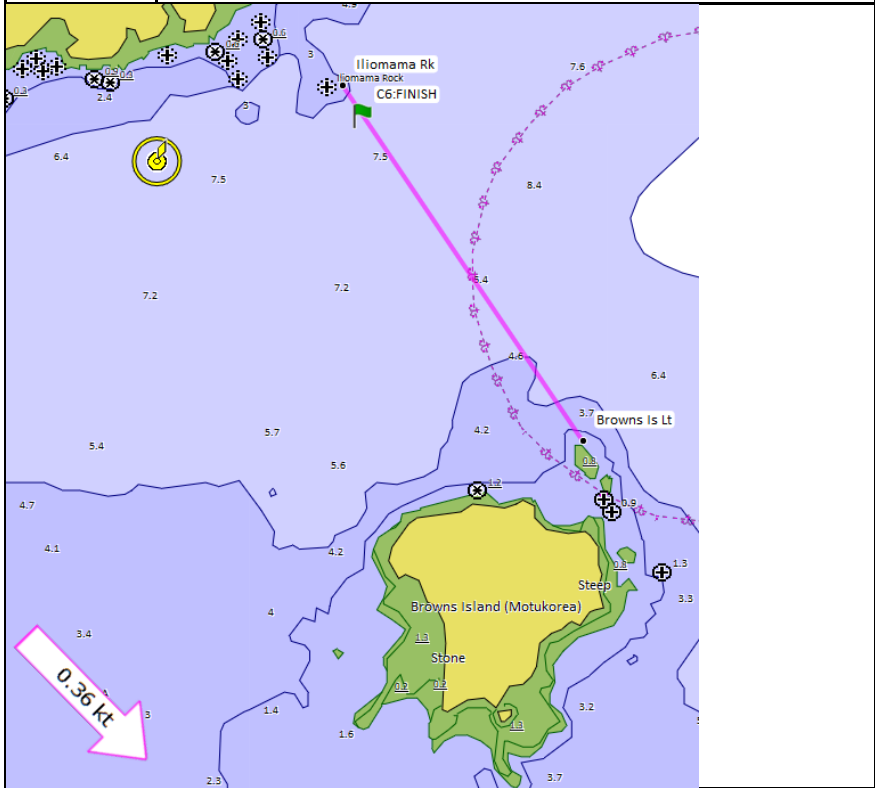
Weiti Boating Club (INC)
PO Box 207 Whangaparaoa



THE JOURNEY STARTS HERE



Course 6: Islington Bay via Rangitoto			
Distance	13.9 miles	Time Limit: 5 hours	
Course	Rangitoto [P], Iliomona Rock [P], Finish 6		
BBQ	Decided on the day		
Finish 6: Islington	[Shortened course: McKenzie finish]		
Transit	Iliomama Rk	36° 48.501 S	174° 53.192 E
	Browns Is Lt	36° 49.436 S	174° 53.928 E
Waypoint	36° 48.581 S 174° 53.252 E		
Bearing	308.2° Mag to Iliomama Light		
Chart	NZ5324		





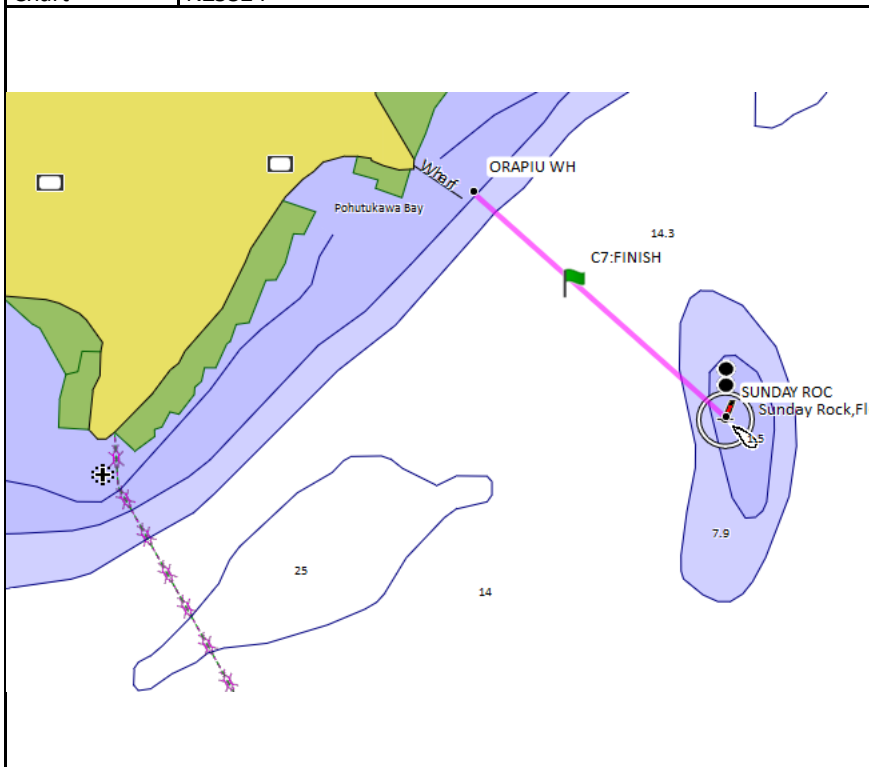
Weiti Boating Club (INC)
PO Box 207 Whangaparaoa



THE JOURNEY STARTS HERE



Course 7: Ponui – Shark Bay			
Distance	23.8 miles	Time Limit: 7 hours	
Course	Rakino [P], Waikeke [P], Finish 7		
BBQ	Shark Bay or alternate. TBD		
Finish 7: Shark Bay		[Shortened course: Rakino finish]	
Transit	Sunday Rock	36° 50.874 S	175° 09.208 E
	Orapiu Bay Wharf	36° 50.692 S	175° 08.969 E
Waypoint	36° 50.765 S 175° 09.065 E		
Bearing	114.1° Mag to Sunday Rock		
Chart	NZ5324		





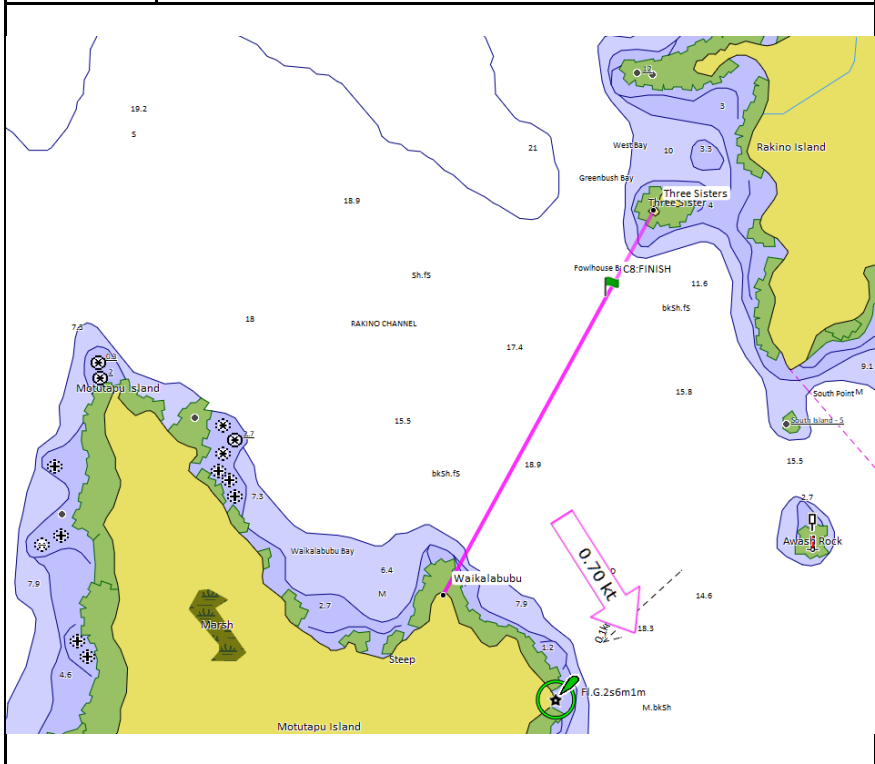
Weiti Boating Club (INC)
PO Box 207 Whangaparaoa



THE JOURNEY STARTS HERE



Course 8: Rakino Island – Woody Bay			
Distance	9.8 miles	Time Limit: 5 hours	
Course	Direct, Finish 8		
BBQ	Woody Bay or alternative		
Finish 8: Rakino		[No alternate finish]	
Transit	Waikalabubu	36° 44.240 S	174° 55.768 E
	Three Sisters	36° 43.396 S	174° 56.308 E
Waypoint	36° 43.561 S 174° 56.202 E		
Bearing	7.7° Mag to Three Sisters		
Chart	NZ5324		

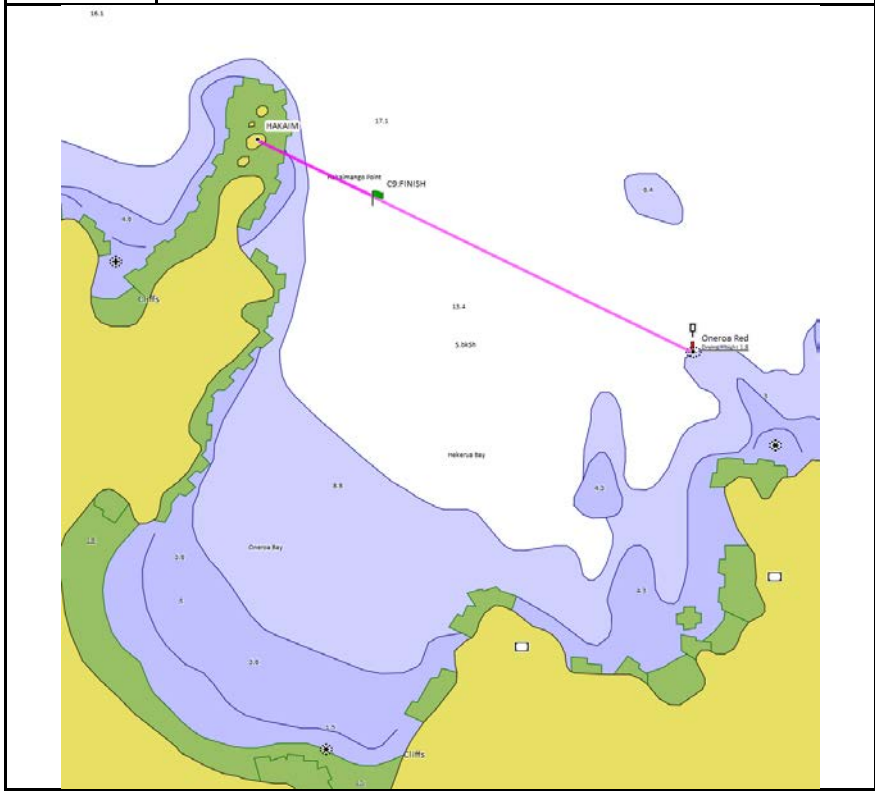




Weiti Boating Club (INC)
PO Box 207 Whangaparaoa



Course 9: Waiheke – Oneroa			
Distance	14.5 miles	Time Limit: 5 hours	
Course	Rakino [P], Finish 9		
BBQ	Oneroa / Little Oneroa Beach		
Finish 9: Oneroa		[Shortened course: Rakino finish]	
Transit	Hakaimango Point	36° 46.066 S	175° 00.860 E
	Port Beacon (Red)	36° 46.372 S	175° 01.611 E
Waypoint	36° 46.077 S 175° 00.882E		
Bearing	98.1° Mag to Port mark		
Chart	NZ5324		



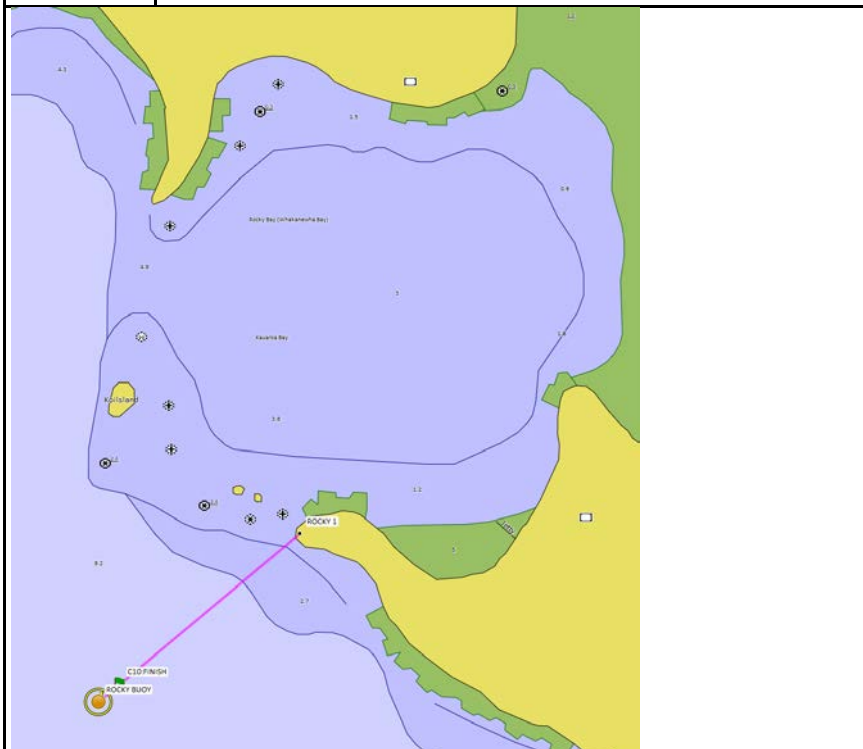


Weiti Boating Club (INC)
PO Box 207 Whangaparaoa

BURNSCO 
THE JOURNEY STARTS HERE



Course 10: Waiheke – Rocky Bay			
Distance	18.9 miles	Time Limit: 5 hours	
Course	Rakino [P], Finish 10		
BBQ	To be advised		
Finish 10: Rocky Bay	[Shortened course: Rakino finish]		
Transit	Kauraroa Bay Headland	36° 49.770 S	175° 03.592 E
	Rocky Bay Buoy	36° 49.980 S	175° 03.300 E
Waypoint	36° 49.957 S 175° 03.327 E		
Bearing	208.8° Mag to Rocky Buoy		
Chart	NZ5324		





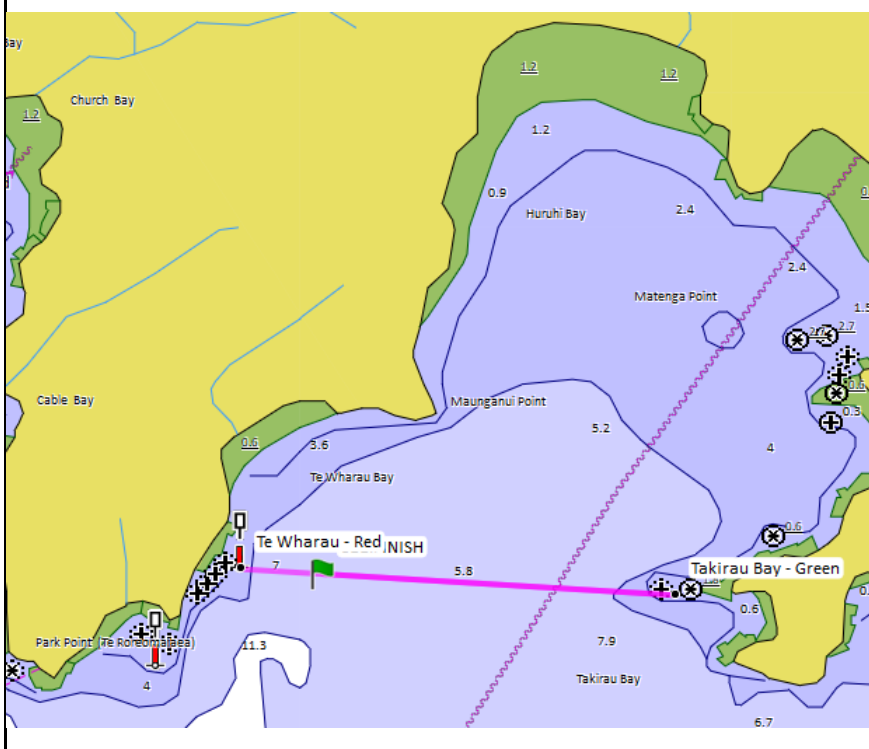
Weiti Boating Club (INC)
PO Box 207 Whangaparaoa



THE JOURNEY STARTS HERE



Course 11: Waiheke – Putiki Bay(Huruhi Bay)			
Distance	16.3 miles	Time Limit: 5 hours	
Course	Rakino [P], Finish 11		
BBQ	Te Wharau Bay		
Finish 11: Huruhi Bay		[Shortened course: Rakino finish]	
Transit	Te Wharau - Red	36° 48.533 S	174° 59.852 E
	Takirau Bay - Green	36° 48.589 S	175° 00.937 E
Waypoint	36° 48.543 S 175° 00.059 E		
Bearing	254.1° Mag to Te Wharau - Red		
Chart	NZ5324		

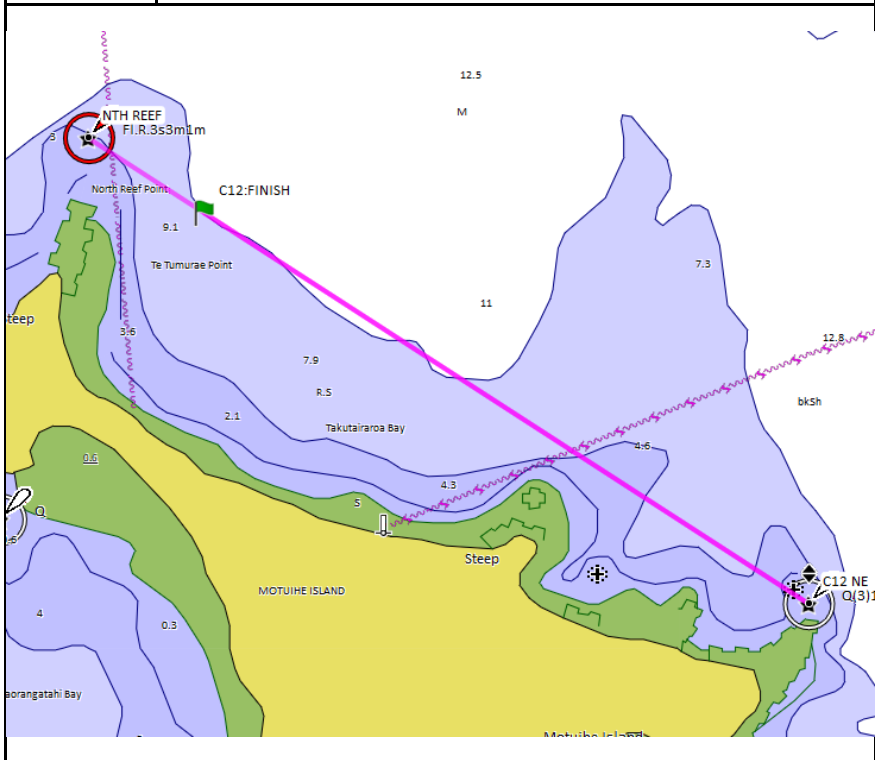




Weiti Boating Club (INC)
PO Box 207 Whangaparaoa



Course 12: Motuihe Is			
Distance	13.9 miles	Time Limit: 5 hours	
Course	Rakino [P], Motutapu Is. [S], Finish 12		
BBQ	Motuihe Island		
Finish 12: Motuihe		[Shortened course: Rakino finish]	
Transit	Motuihe NE Point	36° 48.527 S	174° 57.658 E
	North Reef Light Fl.R.3s	36° 47.700 S	174° 56.200 E
Waypoint	36° 47.871 S 174° 56.473 E		
Bearing	285.1° Mag to Nth Reef mark		
Chart	NZ5324		





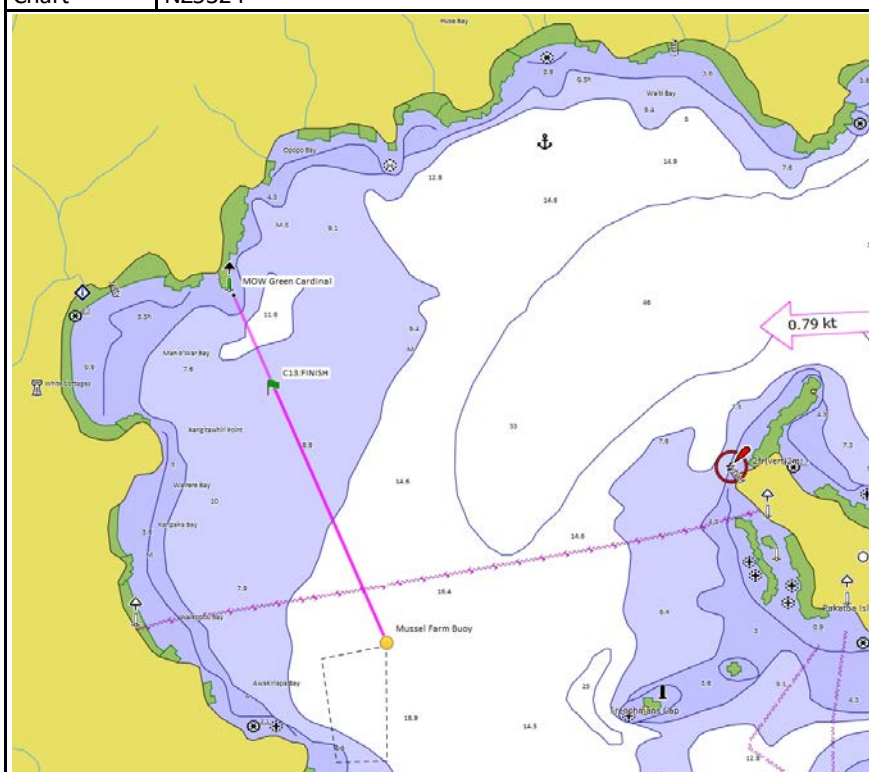
Weiti Boating Club (INC)
PO Box 207 Whangaparaoa



THE JOURNEY STARTS HERE



Course 13: Waiheke - Man o War Bay			
Distance	26.1 miles		
Time Limit:	7 hours		
Course	Rakino Is. [P], Waiheke Is. [S], Finish 13		
BBQ	Man o' War Bay		
Finish 13: Man O War	[Shortened course: Rakino finish]		
Transit	MOW Green Cardinal	036°47.115 S	175°09.819 E
	Mussel Farm Buoy	036°48.028 S	175°10.290 E
Waypoint	36° 47.356 S 175° 09.943 E		
Bearing	318.0° Mag to MOW Green Cardinal		
Chart	NZ5324		





Weiti Boating Club (INC)
PO Box 207 Whangaparaoa



Course 14: Te Kouma	
Distance	34.6 miles
Time Limit:	none
Course	Start, Rangipukea Is (S), Finish 14.
BBQ	To be advised
Finish 14: Te Kouma	[Shortened course: Rakino finish]
Transit	Te Kouma Light
	Rangipukea Is (East end)
	036°49.459 S 175°25.406 E
	036°49.501 S 175°24.824 E
Waypoint	036°49.483 S 175°25.080 E
Bearing	65.3° Mag to Te Kouma Light
Chart	NZ5324

