

SUMMER CRUISING COURSES 2018/2019

In association With Bryant Marine, Imprintz, e-photon, BoatSpray,
Half Moon Bay Electrical, Man O War Vineyards and Boat Spray

This year's Summer Cruising series has had major changes so please read the following carefully.

Flags– BBYC Burgee

Seasons Entry - \$90

Single Entry member \$25

Single Entry Non-member \$35

This event is open to **all** boats, Launches, Powerboats, Trailerboats, Keelers& Multi-hulls. For those not racing, you are welcome to leave anytime and arrive at the destination.

Any changes to destinations will be made and communicated on the Thursday night prior, will be posted on the Official Club notice board and **all** entries with emails advised.

Communication on the water is VHF Channel 77 – Listen 15 minutes before start time

Yachts racing to take their own finish time – hours, minutes, seconds and hand to race committee prior to BBQ.

All others, launches and yachts to provide mystery anchor drop times before or at BBQ.

A BBQ will be provided at each destination and the BBQ will be available for individual use if required, except Man O War Bay Vineyard. Other refreshments may be provided depending on the event and sponsor.

Prizes

Prizes including spot prizes and mystery anchor drop time, will be awarded at each BBQ.

Prizes will be awarded for the Series.

Safety Regulations for Summer Cruising Series

KeelBoats

Part II Category 4 Trailer Boats

Part V Category B

Start lines

Either a transit between Karaka Light and the Browns Is red beacon or Grangers Point. Grangers Point start time will 15:35hrs, 5 minutes behind the rum racers.

Summer Cruising Programme:

Month	Date	Start	Start Line	Destination	Sponsor
Nov	Sat 24 th	11.00 hrs	Karaka Light	Woody Bay Rakino	Imprintz
Jan	Fri 25 th	15.35 hrs	Grangers Pt	Mahurangi Harbour	E-Photon
Feb	Sat 16 th	11.00 hrs	Karaka Light	Waiheke - Bottom End	HMB Electrical
March	Fri 1 st	15.35 hrs	Grangers Pt	Man O War Bay	Man O War Bay
March	Sat 30 th	11.00 hrs	Karaka Light	Waiheke - Onetangi	HMB Boat Spray
April	Fri 19 th	11.00hrs	Karaka Light	Easter Rally – Bottom End of Waiheke	

BRYANT MARINE

MERCURY OUTBOARDS, SPARE PARTS, & ACCESSORIES



MERCURY

CERTIFIED SERVICE CENTRE—SERVICING ALL BRANDS

Unit 6a, 50 Argo Drive, Half Moon Bay Marina

Ph: 09 537 0114 www.raybryant@xtra.co.nz



MERCURY
Service Training Center



Course to be sailed and destination will be decided on the Thursday night prior to the race and posted on the Official Club Notice board, further notification may be made by email or text to entrants.

(Start line is between Karaka Light and Committee Vessel/Pin unless otherwise specified pre-race)

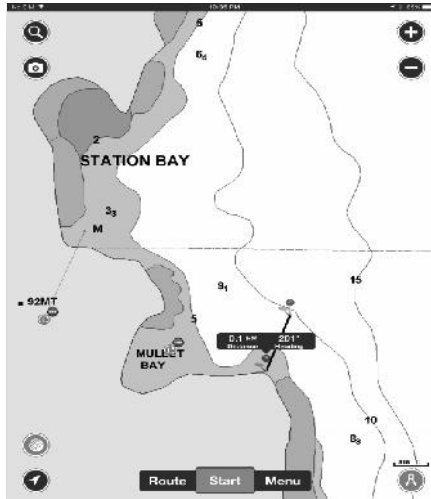
(Finish line positions are GPS waypoints (Pin) unless a committee vessel is on station)

SUMMER CRUISING COURSES 2018/2019

Course 1:

Mullet Bay/Station Bay, Motutapu (SW-W)

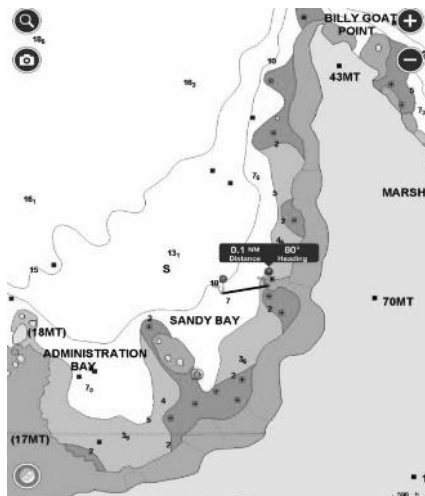
Start - Browns Is. Stb - Finish between South Point of Mullet Bay ($36^{\circ} 45.213'S$ - $174^{\circ} 56.160'E$) and Vessel/Pin ($36^{\circ} 45.118'S$ - $174^{\circ} 56.205'E$)



Course 2:

Administration Bay/Sandy Bay, Motutapu (S-SE)

Start - Browns Is. Stb - Finish between Nth Pt of Sandy Bay ($36^{\circ} 44.558'S$ - $174^{\circ} 54.758'E$) and Vessel/Pin ($36^{\circ} 44.578'S$ - $174^{\circ} 54.600'E$)

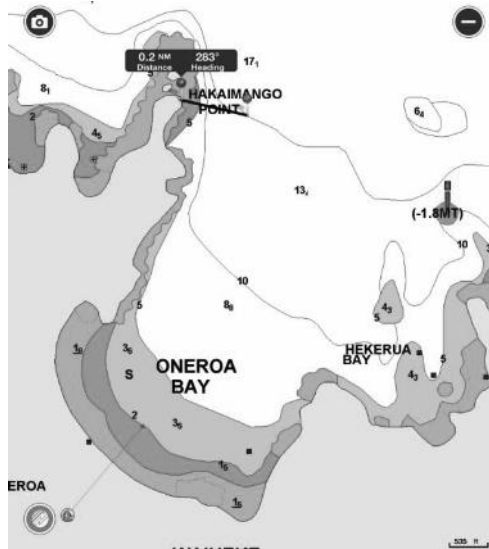


SUMMER CRUISING COURSES 2018/2019

Course 3:

Oneroa, Waiheke (S- SW, light-moderate)

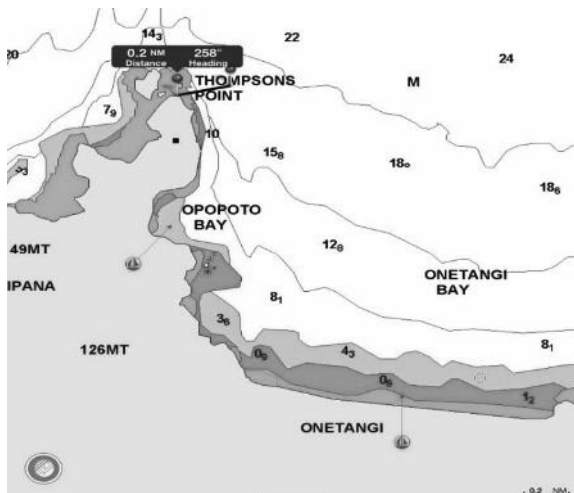
Start -Browns Is. Stb - Finish between Hakaimango Pt (Oneroa Pt) ($36^{\circ} 46.134'S - 175^{\circ} 0.894'E$) and Vessel/Pin ($36^{\circ} 46.166'S - 175^{\circ} 1.075'E$)



Course 4:

Onetangi, Waiheke (SW light-fresh, low swell)

Start -Browns Is. Stb - Finish between Thompsons Pt ($36^{\circ} 45.965'S - 175^{\circ} 3.734'E$) and Vessel/Pin ($36^{\circ} 45.965'S - 175^{\circ} 3.935'E$)

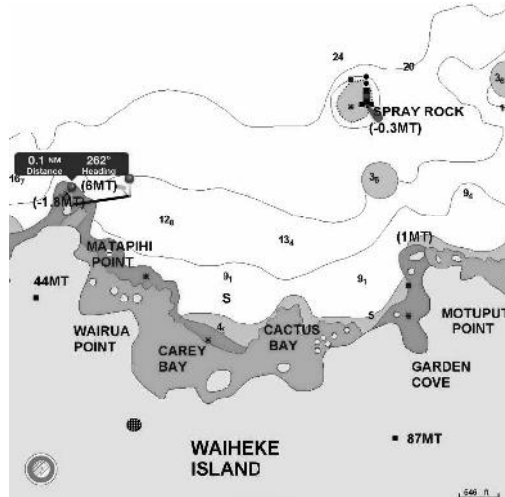


SUMMER CRUISING COURSES 2018/2019

Course 5:

Carey/Cactus/Owhiti Bay, Waiheke (SW, low swell)

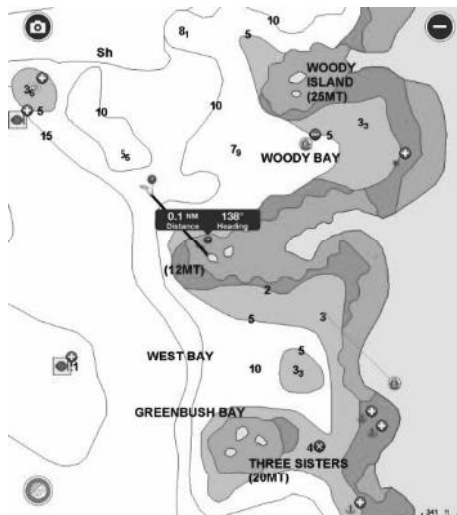
Start -Browns Is. Stb - Finish between Matapihi Pt ($36^{\circ} 45.650'S - 175^{\circ} 7.245'E$) and Vessel/Pin ($36^{\circ} 45.631'S 175^{\circ} 7.404'E$)



Course 6:

Woody Bay/West Bay, Rakino (N-E) – Waikarapupu (Waikalabubu), Motutapu (SW)

Start -Browns Island Stb - Finish between West and Woody Bay ($36^{\circ} 43.090'S - 174^{\circ} 56.270'E$) and Vessel/Pin ($36^{\circ} 42.997'S - 174^{\circ} 56.165'E$)

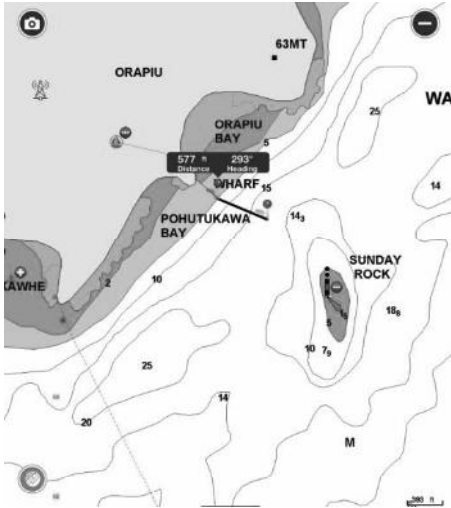


SUMMER CRUISING COURSES 2018/2019

Course 7:

Bottom End, Waiheke

Start - Browns Is. Stb - Finish between Orapiu Wharf ($36^{\circ} 50.692'S - 175^{\circ} 8.968'E$) and Vessel/Pin ($36^{\circ} 50.729'S - 175^{\circ} 9.078'E$)



Preferred Anchorages:

Te-Kawau Bay, Ponui (S-SE)

Shark Bay, Ponui (NE-E)

Awakiriapa Bay, Waiheke (SW light-fresh)

Man-o-war Bay, Waiheke (When thirsty)

Ruthe Passage, Ponui (SW)

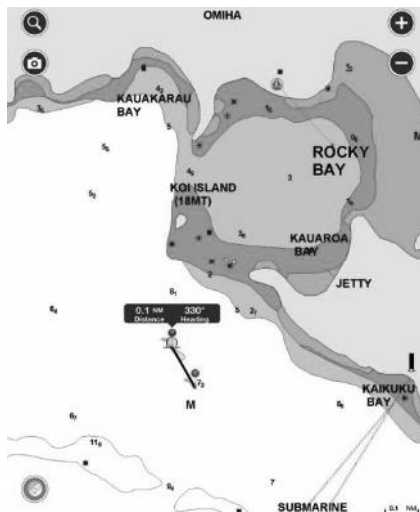
Chamberlains Bay, Ponui (Never)

NE Bay, Rotoroa (NE)

Course 8:

Rocky Bay/Kauaroa Bay, Waiheke (SE)

Start - Browns Island stb – Finish between Rocky Bay Yellow Bouy ($36^{\circ} 49.979'S - 175^{\circ} 3.300'E$) and Vessel/Pin ($36^{\circ} 50.101'S - 175^{\circ} 3.391'E$)

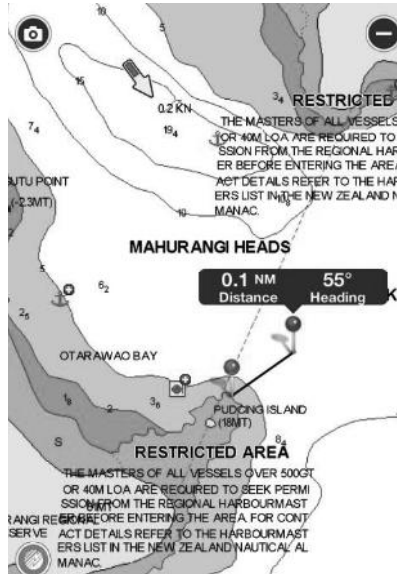


SUMMER CRUISING COURSES 2018/2019

Course 9:

Huruhi Bay, Waiheke (NW)

Start - Browns Is stb – Finish between Red beacon east of Park Pt (36° 48.743'S - 174° 59.656'E) and Vessel/Pin (36° 48.813'S - 174° 59.829'E)

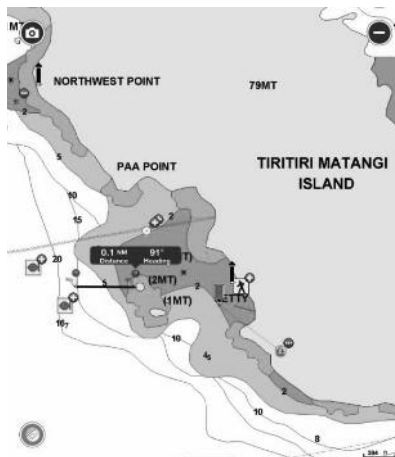


Course 10:

Hobbs Bay (Nth of Wharf), Tiritiri Matangi (settled NE or variable)

(Note: no fires or gas cooking permitted ashore)

Start - Finish between rocks outside Bay on SW side (36° 36.328'S - 174° 53.034'E) and Vessel/Pin (36° 36.327'S - 174° 52.889'E)

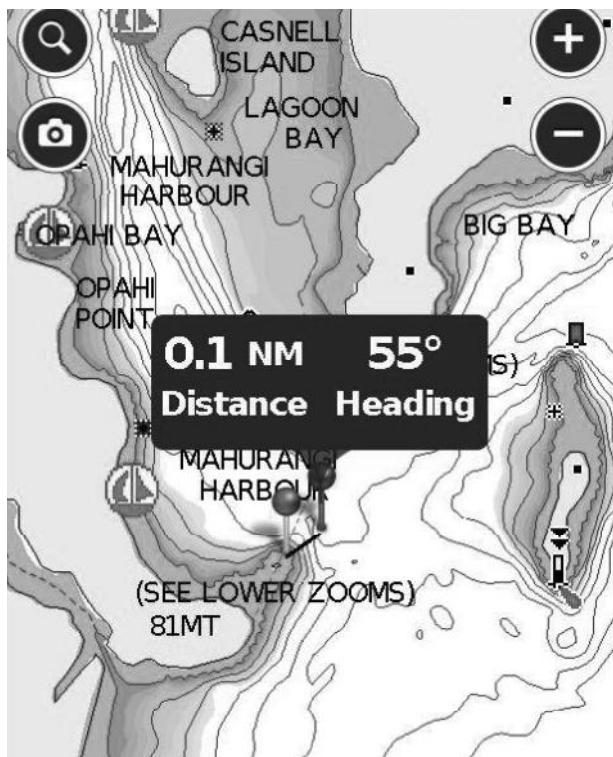


SUMMER CRUISING COURSES 2018/2019

Course 11:

Mahurangi Harbour

Start - Finish between Pudcing Island (36° 30.798'S - 174° 43.898'E) and Vessel/Pin (36° 30.725'S - 174° 44.018'E)



Course to be sailed and final destination will be advised by the race committee on the Thursday night prior to the event and posted on the official notice board.

Please listen to VHF Channel 77 15 minutes before the start time for course instructions. Race start will be counted down on VHF Channel 77. Yachts racing to take their own finish time in hours, minutes and seconds and hand to the race committee prior to BBQ in the absence of a committee vessel.

SUMMER CRUISING COURSES 2018/2019

RACE ONE – IMPRINTZ DESIGN & PRINT CHRISTMAS RUSH PARTY

Date	Saturday 24 th November 2018
Start Line	Karaka Light
Start Time	11:00 hrs
Destination	Woody Bay, Rakino
Course # 5	Woody Bay/West Bay, Rakino (N-E) – Waikarapupu (Waikalabubu), Motutapu (SW) Start -Browns Island Stb - Finish between West and Woody Bay (36° 43.090'S - 174°56.270'E) and Vessel/Pin (36° 42.997'S - 174° 56.165'E)
BBQ	TBA – most sheltered anchorage and bay



Leave your mark.

- Boat Names
- Business Cards
- Vehicle Graphics
- Wedding Stationery
- Banners
- Brochures & More

☎ 09 576 3875
 ✉ design@imprintz.co.nz
 🌐 www.imprintz.co.nz
 📱 @imprintz.nz

SUMMER CRUISING COURSES 2018/2019

RACE TWO - E.PHOTON CLASSIC

Date	Friday 25 th January 2019 (Auckland Anniversary weekend)
Start Line	Grangers Point
Start Time	15:35 hrs
Destination	MahurangiHarbour
Course # 9	MahurangiHarbour Start - Finish between Pudcing Island (36° 30.798'S - 174° 43.898'E) and Vessel/Pin (36° 30.725'S - 174° 44.018'E)
BBQ	Scotts Landing Beach & then live band at the tent

e·photonTM
illuminating the future

Led Lighting
Contact Geoff Truscott
Ph: 274-3143

SUMMER CRUISING COURSES 2018/2019

RACE THREE – HALFMOON BAY ELECTRICAL BEACH PARTY

Date	Saturday 16th February 2019
Start Line	Karaka Light
Start Time	11:00hrs
Destination	Waiheke – Bottom End
Course # 6	Bottom End, Waiheke Start -Browns Is. Stb- Finish between Orapiu Wharf (36° 50.692'S - 175°8.968'E) and Vessel/Pin (36° 50.729'S - 175° 9.078'E)
BBQ	TBA – most sheltered anchorage and bay Wear Island style beach shirt / sarongs to BBQ Combine with BJ Tyres single handed



HMB Marine Electrical

For all your marine electrical needs

MARINE ELECTRONICS / ENTERTAINMENT



- All major brands
- Competitive pricing
- Expert advice
- Professional installation
- Maintenance / refits
- Refrigeration, heating

LOWRANCE

ENDURANT
BATTERIES

SIMRAD

Raymarine

Webasto
Feel the drive

Visit our website for great deals: www.hmbe.co.nz

Call SJ on (09) 537 0502 or 021 978 052 E: sj@hmbe.co.nz

SUMMER CRUISING COURSES 2018/2019

RACE FOUR - MAN O'WAR VINEYARDS

Date	Friday 1 st March to Saturday 2 nd March 2019
Start Line	Grangers Point
Start Time	15:35 hrs
Destination	Waiheke – Bottom End
Course # 6	Bottom End, Waiheke Start - Browns Is. Stb- Finish between Orapiu Wharf (36° 50.692'S - 175° 8.968'E) and Vessel/Pin (36° 50.729'S - 175° 9.078'E)
Prize Giving Saturday 11:30 hrs	No BBQ – Platters and extended menu available at Man O War Vineyard



“The Ultimate Wine Experience”
Lunch platters ~ Tastings/sales
Family friendly

OPEN 7 DAYS

Labour Weekend to Easter 11am – 6pm

Easter to Labour Weekend 11am – 4.30pm

Ph 372 9678 www.manowarvineyards.co.nz
(follow the signs to Man O'War Bay)

SUMMER CRUISING COURSES 2018/2019

RACE FIVE – BOAT SPRAY

Date	Saturday 30th March 2019
Start Line	Karaka Light
Start Time	11:00 hrs
Destination	Waiheke - Onetangi
Course # 4	Onetangi, Waiheke (SW light-fresh, low swell) Start -Browns Is. Stb - Finish between Thompsons Pt (36° 45.965'S - 175°3.734'E) and Vessel/Pin (36° 45.965'S - 175°3.935'E)
BBQ	At the beach



BOATSPRAY

ON THE HARDSTAND AT HMB MARINA

'You'll always know where to find us'

OUR FRIENDLY AND PROFESSIONAL SERVICES:

- o Anti-fouls, Touch-ups, Advice
- o Repaints, Prop-Speed, Repairs
- o Insurance work and Refits
- o Cut & polish, Colour matching
- o Mobile and Marina Service
- o Project management

'All weather' work areas to save you time—21m shed & 15m tents



Call Brian Kent or Simon Manning on 09 **535-4802**

SUMMER CRUISING COURSES 2018/2019

EASTER RALLY – BOTTOM END OF WAIHEKE

Date	Friday 19 April 2019
Start Line	Karaka Light
Start Time	11:00 hrs
Destination	Waiheke Bottom End
Course # 6	Bottom End, Waiheke Start -Browns Is. Stb- Finish between Orapiu Wharf (36° 50.692'S - 175°8.968'E) and Vessel/Pin (36° 50.729'S - 175° 9.078'E)
BBQ	TBA at the beach – AFTERNOON With loads of fun for all

YES – Its great fun

YES–You have the rest of Easter to cruise and if you are retired or can plan it, take off the rest of the week which includes ANZAC day on Thursday 25 April

YES–Fly your club burgee on your boat

YES–It is open to all yachts, launches & powerboats

Registration forms and details will be available from the BBYC Office

