



Oceanbridge NZL Sailing Regatta

Olympic and Youth Classes Regatta.

Thursday 31st January to Sunday 3rd February 2019

The Organising Authority is Yachting New Zealand and the regatta will be hosted by the Royal Akarana Yacht Club, 8 Tamaki Drive, Okahu Bay, Auckland

This regatta is a:

Nomination regatta for selection to the NZL Sailing Foundation Youth Team to attend the 2019 Youth Sailing World Championships for Laser Radial, 420, 29er, Nacra 15 and RS:X 8.5 classes.

SAILING INSTRUCTIONS

NB: The notation '[DP]' in a rule in the SI means that the penalty for a breach of that rule may, at the discretion of the protest committee, be less than disqualification.

1 RULES

1.1 The regatta will be governed by the rules as defined in *The Racing Rules of Sailing*.

1. **1.2** The prescriptions and regulations of Yachting New Zealand will not apply except for the Prescription that applies to RRS67. Which prescribes that:

1: The findings of fact, and decisions of protest committees, shall be relevant only for the purposes of the World Sailing Racing Rules of Sailing.

2. Any issue of liability or claim for damages arising from an incident while a boat is bound by The Racing Rules of Sailing shall be subject to the jurisdiction of the courts and not considered by a protest committee.

3. A boat that retires from a race, or accepts a penalty does not, by that action alone admit liability.

1.3 The Yachting New Zealand safety Regulations shall not apply except for:

1. Section 11: Boats shall carry their sail number on the port and starboard sides of the hull, in clearly distinctive letter and figures at least 50mm high.

2. Section 12: Each boat trailer or cradle shall be clearly marked with the class and sail number of the boat using it.

1.4 Appendix T, *Arbitration*, will apply.

1.5 If there is a conflict between languages, the English text will take precedence.

2 NOTICES TO COMPETITORS

Notices to competitors will be posted on the official notice board located at the entrance of the Auckland Sailing Club.

3 CHANGES TO SAILING INSTRUCTIONS

Any change to the sailing instructions will be posted before 0900 on the day it will take effect, except that any change to the schedule of races will be posted by 2000 on the day before it will take effect.

4 SIGNALS MADE ASHORE

4.1 Signals made ashore will be displayed on the flagpole at the northern end of the Auckland Sailing Club building.

4.2 A boat shall not go afloat until flag D is displayed ashore. The warning signal will not be made before the scheduled time or less than 60 minutes after flag D is displayed.

4.3 When flag AP is displayed ashore, '1 minute' is replaced with 'not less than 60 minutes' in the race signal AP.

5 SCHEDULE OF RACES/CLASS FLAGS

5.1 Schedule of Racing:

Class	Number of Races Scheduled			Class Flag Background
	Friday 1 st February	Saturday 2 nd February	Sunday 3 rd February	
Laser Standard	3	3	2	White
Laser Radial	3	3	2	Blue
470	3	3	2	White
420	3	3	2	White
RS:X 9.5 and 8.5	3	3	2	White
49er	4	4	3	Yellow
49Fx	4	4	3	Yellow
29er	4	4	3	White
Nacra 15	4	4	3	White
Nacra 17 Foiling	4	4	3	Blue
Kite	6	6	4	White

One extra race per day may be sailed, provided that no class becomes more than one race ahead of schedule and the change is made according to SI 3.

5.2 The first warning signal for the first race on each day is 11:00.

5.3 To alert boats that a race or sequence of races will begin soon, the orange starting line flag will be displayed with one sound at least five minutes before a warning signal is made.

5.4 On the Sunday 3 February no warning signal will be made after 1630hrs.

6 RACING AREAS

Attachment A shows the location of racing areas. Assignment to a racing area will be posted by 0900 on the day of that assignment.

7 THE COURSES

7.1 The diagrams in Attachment B show the courses, including the approximate angles between legs, the order in which marks are to be passed, and the side on which each mark is to be left.

7.2 No later than the warning signal, the race committee signal vessel will display the approximate compass bearing of the first leg.

7.3 Courses will not be shortened. This changes RRS 32.

8 MARKS

8.1 Mark descriptions are described in Attachment B

8.2 A race committee vessel signalling a change of a leg of the course is a mark as provided in SI 11.2.

9 AREAS THAT ARE OBSTRUCTIONS

The following areas are designated as obstructions:
East Bastion Reef, West Bastion Reef.

10 STARTS

10.1 Races will be started by using RRS 26 with the warning signal made five (5) minutes before the starting signal.

10.2 The starting line will be between a staff displaying an orange flag on the starting mark at the starboard end and the course side of the port-end starting mark.

10.3 [DP] Boats whose warning signal has not been made shall avoid the starting area during the starting sequence for other races.

10.4 A boat that does not start within four (4) minutes after her starting signal will be scored Did Not Start without a hearing. This changes RRS A4 and A5.

11 CHANGE OF THE NEXT LEG OF THE COURSE

11.1 To change the next leg of the course, the race committee will lay a new mark (or move the finishing line) and remove the original mark as soon as practicable. When in a subsequent change a new mark is replaced, it will be replaced by an original mark.

11.2 Except at a gate, boats shall pass between the race committee vessel signalling the change of the next leg and the nearby mark, leaving the mark to port and the race committee vessel to starboard. This changes RRS 28.

12 THE FINISH

12.1 The finishing line will be between a staff displaying a blue flag on the finishing mark at the port end and the course side of the starboard-end finishing mark.

13 PENALTY SYSTEMS

13.1 For the 49er, 49FX, 29er, Nacra 15 and Nacra 17 Foiling classes RRS 44.1 and Appendix P2.1, is changed so that the Two-Turns Penalty is replaced by the One-Turn Penalty.

13.2 Appendix P will apply.

14 TIME LIMITS AND TARGET TIMES

14.1 Time limits and target times are as follows:

CLASS	Target Time (Minutes)	Time Limit (Minutes)	Finish Window (Minutes)
Laser Standard	50	75	15
Laser Radial	50	75	15
470	50	75	15
420	50	75	15
RS:X 9.5	20 -25	50	10
RS:X 8.5	20 - 25	50	10
49er	30	50	10
49Fx	30	50	10
29er	30	50	10
Nacra 15	30	50	10
Nacra 17 Foiling	30	50	10
Kite	10	30	10

14.2 Boats failing to finish within the Finish Window after the first boat sails the course and finishes will be scored Did Not Finish without a hearing. This changes RRS 35, A4 and A5.

15 PROTESTS AND REQUESTS FOR REDRESS

15.1 Protest forms are available at the race office, located at upstairs Auckland Sailing Club. Protests and requests for redress or reopening shall be delivered there within the appropriate time limit.

15.2 For each class, the protest time limit is 60 minutes after the last boat has finished the last race of the day or the race committee signals no more racing today, whichever is later.

- 15.3** Notices will be posted no later than 30 minutes after the protest time limit to inform competitors of hearings in which they are parties or named as witnesses. Hearings will be held in the protest room, located on the ground floor of the Royal Akarana Yacht Club, beginning at the time posted. Notices of protests by the race committee, technical committee or protest committee will be posted to inform boats under RRS 61.1(b).
- 15.4** A list of boats that, under SI 13.2, have been penalised for breaking RRS 42 will be posted.
- 15.5** Breaches of SIs 10.3, 17, 20, 22, and 23 will not be grounds for a protest by a boat. This changes RRS 60.1(a).
- 15.6** On the last scheduled day of racing a request for redress based on a protest committee decision shall be delivered
- (a) within the protest time limit if the requesting party was informed of the decision on the previous day;
 - (b) no later than 30 minutes after the party was informed of the decision on the day.

This changes RRS 62.2

16 SCORING

- 16.1** Three (3) races are required to be completed to constitute a series.

17 SAFETY REGULATIONS

- 17.1** [DP] Competitors shall wear personal flotation devices, except briefly while changing or adjusting clothing or personal equipment at all times while afloat. This changes RRS 40.
- 17.2** [DP] Boats not leaving the shore for a scheduled race shall promptly notify the race office.
- 17.3** Check –out and check –in ashore:
- a) [DP] Competitors shall individually check out before racing by personally leaving their ID card on the sign on board and taking a wrist band and wearing it while on the water. This board will be located on the ground level in front of the boat storage area of the Auckland Sailing Club.
 - b) [DP] Competitors shall individually check-in immediately on returning to shore after racing, by placing the wrist band back on the sign on board and uplifting their ID card.
- 17.4** [DP] A boat retiring from racing shall notify the Race Committee before leaving the racing area, or if that is not possible, shall notify the Race Office as soon as possible after returning ashore.

17.5 [DP] Boats retiring from racing shall in addition to SI 17.4 complete a retirement declaration form at the Race Office before the protest time limit.

18 REPLACEMENT OF CREW OR EQUIPMENT

18.1 [DP] Substitution of competitors will not be allowed without prior written approval of the race committee.

18.2 [DP] Substitution of damaged or lost equipment will not be allowed unless authorised by the technical committee. Requests for substitution shall be made to the committee at the first reasonable opportunity.

19 EQUIPMENT AND MEASUREMENT CHECKS

A boat can be instructed by a member of the race committee or the technical committee to proceed immediately to a designated area for inspection.

20 EVENT ADVERTISING

[DP]Boats shall display event advertising supplied by the organising authority as follows: Bow stickers as provided at registration. If this rule is broken, World Sailing Regulation 20.9.2 applies.

21 OFFICIAL BOATS

Official boats will be marked as follows: Oceanbridge NZL Sailing Regatta sticker on their outboard cover.

22 SUPPORT BOATS

22.1 [DP] Except when requested to participate in rescue operations, team leaders, coaches, and other support persons shall stay outside areas where boats are racing and are restricted to a 5 knot speed limit, from the time of the preparatory signal for the first start of a sequence of starts until all boats have finished or the race committee signals a postponement or abandonment of all races. The areas the boats are racing in is defined as the area inside the course and within 100 metres of any mark, lay line, starting line, finishing line or any area where any boat that is racing is sailing or may sail.

22.2 Attention is drawn the relevant local council bylaws regarding wearing of lifejackets and other restrictions.

In Particular Auckland Council Navigation Bylaws 2014 sections 9 and 55

9 Wearing of personal flotation devices on small recreational vessels six metres or less

(1) Every person on board a small recreational vessel must wear a properly secured personal flotation device of an appropriate size for that person at all times.

(2) Subclause (1) does not apply if the person in charge of the vessel, after assessing all circumstances and determining there would be no reduction in safety, expressly authorises any person on board to remove a personal flotation device.

55 Moving prohibited zone

(1) A moving prohibited zone extending to 100 metres astern and 100 metres to each side of a large vessel, and continuing at such width to 500 metres ahead, following the line of the buoyed channel when changing course, is reserved around a large vessel, when that large vessel is underway within the pilotage areas of Auckland (excluding Tāmaki River) and Manukau.

(2) When navigating within a marked channel, the moving prohibited zone to the side of the large vessel is reduced to the width of the marked channel and the zone ahead of the large vessel must follow the line of the marked channel.

(3) The owner or person in charge of a vessel must not navigate the vessel within the moving prohibited zone of a large vessel, within the pilotage area of Auckland (excluding Tāmaki River) and Manukau.

(4) For the purpose of this clause, a tug and barge is considered a composite unit.

22.3 When flag V (with a long sound signal) is displayed on a committee boat all support boats are requested to remain afloat and assist all sailors.

22.4 [DP]Support boats shall be marked with Oceanbridge NZL Sailing Regatta sticker on their outboard cover.

23 RADIO COMMUNICATION

Except in an emergency, a boat that is racing shall not make voice or data transmissions and shall not receive voice or data communication that is not available to all boats. This restriction also applies to mobile telephones. [DP]

24 PRIZES

Medals will be presented to the first three(3) place getters in each class

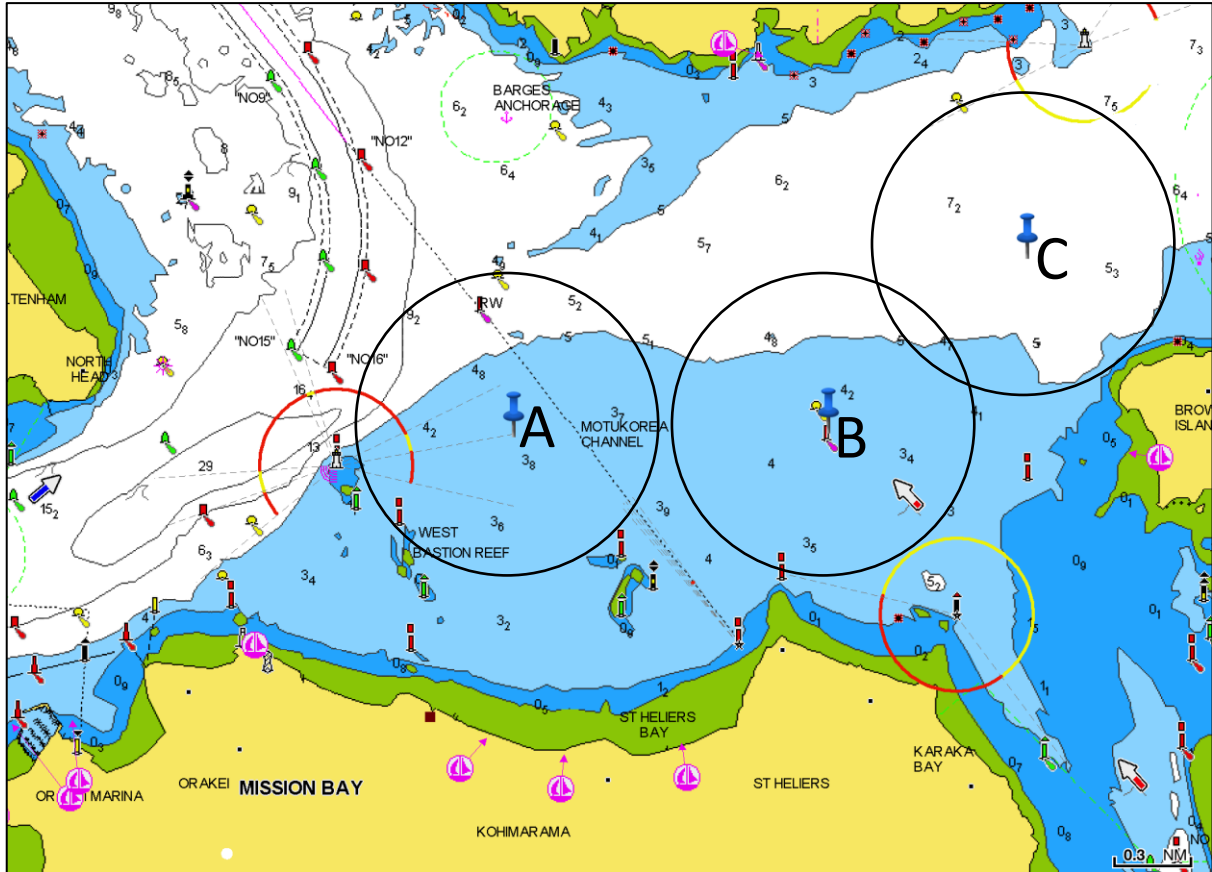
25 INSURANCE

Each participating boat shall be insured with valid marine third-party liability insurance with a minimum cover of \$1,000,000 per incident or the equivalent. Certificate of insurance is to be presented at registration.

26 DISCLAIMER OF LIABILITY

Competitors participate in the regatta entirely at their own risk. See RRS 4, Decision to Race. The organising authority will not accept any liability for material damage or personal injury or death sustained in conjunction with or prior to, during, or after the regatta.

ATTACHMENT A - Racing Areas



Course area A Centre S36° 49.900' E 174° 50.660' Diameter approximately 1 NM.
Course area B Centre S36° 49.900' E 174° 52.050' Diameter approximately 1 NM.
Course area C Centre S36° 49.250' E 174° 52.940' Diameter approximately 1 NM.

ATTACHMENT B - Marks

Laser Standard, Laser Radial, 470, 420.

MARK	DESCRIPTION
1 and 2	Large red cylindrical buoy
3s and 3p	Red cylindrical buoys
4s and 4p	Red cylindrical buoys
Starting mark starboard end	Committee Keelboat
Starting mark port end	Yellow Cylindrical buoy
Finishing mark starboard end	Orange Tear Drop Buoy
Finishing mark port end	Committee Boat 'RAYC'
New mark	Blue cylindrical buoy.

Kite, RS:X 9.5, RS:X 8.5

MARK	DESCRIPTION
1	Large yellow cylindrical buoy
4s and 4p	Red cylindrical buoys
Starting mark starboard end	Committee Keelboat
Starting mark port end	Yellow Cylindrical buoy
Finishing mark starboard end	Orange Tear Drop Buoy
Finishing mark port end	Committee Boat 'RAYC'
New mark	Pink cylindrical buoy

49er, 49er FX, Nacra 17

MARK	DESCRIPTION
1	Large Yellow Cylindrical buoy
4s and 4p	Blue Cylindrical buoy
Starting mark starboard end	Committee Catamaran
Starting mark port end	Red Cylindrical Buoy
Finishing mark starboard end	Red Cylindrical Buoy
Finishing mark port end	Committee Catamaran
New mark	Black Cylindrical Buoy

29er, Nacra 15

MARK	DESCRIPTION
1	Large blue Cylindrical buoy
4s and 4p	Blue Cylindrical buoy
Starting mark starboard end	Committee Catamaran
Starting mark port end	Red Cylindrical Buoy
Finishing mark starboard end	Red Cylindrical Buoy
Finishing mark port end	Committee Catamaran
New mark	Pink Cylindrical Buoy

Assignment to Course Areas and starting order for first start

Friday 1 February 2019

Course Area A

CLASS	Warning Signal
470 and Laser Standard	11.00
420	11:05
Laser Radial	11:10
RS:X 9.5 and RS:X 8.5	11.15
Kite	11:20

Course Area B

CLASS	Warning Signal
Nacra 17	11.00
Nacra 15	11:05
49er and 49er FX	11:10
29er	11.15

ATTACHMENT C(1):

Laser Standard, Laser Radial, Finn, 470, 420

I

Course: Inner Trapezoid

Signal	Mark Rounding Order
I1	Start – 1 – 2 – 3p – Finish
I2	Start – 1 – 4s/4p – 1 – 2 – 3p – Finish
I3	Start – 1 – 4s/4p – 1 – 4s/4p – 1 – 2 – 3p – Finish
I4	Start – 1 – 4s/4p – 1 – 4s/4p – 1 – 4s/4p – 1 – 2 – 3p – Finish

O

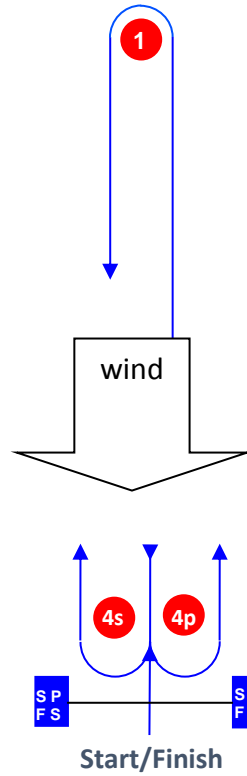
Course: Outer Trapezoid

Signal	Mark Rounding Order
O2	Start – 1 – 2 – 3s/3p – 2 – 3p – Finish
O3	Start – 1 – 2 – 3s/3p – 2 – 3s/3p – 2 – 3p – Finish
O4	Start – 1 – 2 – 3s/3p – 2 – 3s/3p – 2 – 3s/3p – 2 – 3p – Finish

Attachment C (2)

RS:X 9.5, RS:X 8.5 29er, Nacra 15, 49er, 49er FX, Nacra 17

L



Signal	Mark Rounding Order
L2	Start – 1 – 4s/4p – 1 – Finish
L3	Start – 1 – 4s/4p – 1 – 4s/4p – 1 – Finish
L4	Start – 1 – 4s/4p – 1 – 4s/4p – 1 – 4s/4p – 1 – Finish