



**2018 Wakatere Junior Regatta,
O'pen Bic and RS Feva Classes
RS Feva North Island Championships**

Saturday 8th – Sunday 9th December 2018

The Organising Authority is the Wakatere Boating Club (WBC)

NOTICE OF RACE

1 RULES

- 1.1 The regatta will be governed by the rules as defined in *The Racing Rules of Sailing*.

O'pen Bic and RS Feva Classes are also invited to take part in additional events during the regatta which although governed by principals of good sportsmanship and fair sailing will not be governed by *The Racing Rules of Sailing*.

- 1.2 The Yachting New Zealand Safety Regulations Part 1 shall apply.

- Refer - <http://www.yachtingnz.org.nz/racing/safety-regulations>
- O'pen Bic Class competitors shall wear safety helmets whilst on the water

- 1.3 Under rule 86, *Changes to The Racing Rules* the following racing rules will be changed as follows:

- Rule 60.1(a) will be changed to state that a competitor cannot protest another boat or competitor for breaches of some specific parts of the Sailing Instructions,
- Rules A4 and A5 will be changed to state that a boat starting later than 4 minutes after her starting signal will be scored Did Not Start.
- For the O'Pen Bic Class, If the Race Committee believe that the average wind speed is clearly over 8 knots across the course, they may signal in accordance with RRS Appendix P5 that pumping, rocking and ooching are permitted except on a windward leg. This changes rules RRS 42.2(a), RRS

42.2(b), RRS 42.2(c).

The changes will appear in full in the Sailing Instructions. The Sailing Instructions may also change other racing rules.

- 1.4 For protests where only a Rule of Part 2, *When Boats Meet* or Rule 31, *Touching a Mark*, is alleged to have been broken an arbitration hearing may be offered prior to any formal hearing.

2 ADVERTISING

Boats may be required to display advertising chosen and supplied by the Organizing Authority.

3 ELIGIBILITY AND ENTRY

- 3.1 The regatta is open to all boats of the O'Pen Bic and RS Feva, classes that comply with their class rules.
- 3.2 To be eligible to compete in this event each competitor shall be a financial member of a club recognised by the competitor's national authority.
- 3.3 Eligible boats may enter by completing an Entry Form and paying the required entry fee at registration.

4 CLASSIFICATION

There are no classification requirements in accordance with RRS 79.

5 FEES

- 5.1 The required entry fee is \$40 per boat for classes racing on 2 days. The entry fee for additional family members is discounted by \$5.
- 5.2 EFTPOS will be available at the club at registration.

6 SCHEDULE

6.1 *Registration:*

Saturday 8th December 2018 from 1000 to 1200, at the Wakatere Boating Club.

6.2 *Briefing:*

Saturday 8th December 2018, at 1215, at the Wakatere Boating Club.

Sunday 9th December 2018, at 0900, at the Wakatere Boating Club.

An additional briefing may be held at 1230 Sunday 9th for that afternoon's point to point race. This will be confirmed Sunday morning.

6.3 *Dates of racing:*

Classes	Day	Date	Time of First Warning Signal	Number of Races
All Classes	Day 1	Sat 8th Dec, 2018	1330	4
O'pen Bic RS Feva only	Day 2	Sun 9th Dec, 2018	1000	Up to 4

- 6.4 Races may be sailed back-to-back. For competitors on Sunday 9th December Lunch may be held ashore at an alternative location. Competitors will be briefed that morning.

- 6.5 No warning signal will be made after 1630 hours on either day of racing.

- 6.6 Prize giving will be held as soon as possible after racing has been completed. RS Feva and O'pen Bic prizegiving will be held after racing on Sunday.

7 SAILING INSTRUCTIONS

The sailing instructions will be available at registration on Saturday 8th December, 2018 at the Wakatere Boating Club.

8 VENUE

- 8.1 Appendix A shows the location of the regatta venue.

- 8.2 Appendix B shows the approximate location of the racing area.

9 THE COURSES

On Saturday 8th December the courses to be sailed will be Windward/Leeward, Triangle, and/or Trapezoid courses.

On Sunday 9th December the courses will be a mixture of laid courses per Saturday, harbour courses, point to point races, and additional competitions to be specified at that day's briefing.

10 PENALTY SYSTEM

Rule 44.1 is changed so that the Two-Turns Penalty is replaced by the One-Turn Penalty

11 SCORING

- 11.1 For O'pen Bic and RS Feva classes 2 races are required to be completed to constitute a series.

- 11.2 A boat's series score shall be the total of her race scores, with no discard.

- 11.3 O'pen Bic and RS Feva classes will be able to take part in additional events and competitions not governed by The Racing Rules of Sailing which will be acknowledged at prizegiving. It will be clearly signalled which events will not be governed by The Racing Rules of Sailing.

12 SUPPORT BOATS

All support boats must register with the Organising Authority at registration and nominate the boat(s) they support

13 LAUNCHING AND STORAGE

- 13.1 All competing boats shall be launched and retrieved from Narrow Neck Beach near the Wakatere Boating Club clubhouse, unless instructed otherwise by the Organising Authority.

- 13.2 Beach trolleys may not be left on the beach while afloat. All trolleys must be stacked neatly on the pavement in front of the Wakatere Boating Club.

14 RADIO COMMUNICATION

Except in an emergency, a boat shall neither make radio transmissions while racing nor receive radio communications not available to all boats. This restriction also applies to mobile telephones.

15 PRIZES

- 15.1 Prize giving will be held as soon as possible after racing has completed.
- 15.2 If spot prizes are available, competitor(s) must be present at the prize-giving.
- 15.3 Prizes will be awarded at the discretion of the Organising Authority.

16 DISCLAIMER OF LIABILITY

Competitors participate in the regatta entirely at their own risk. See rule 4, *Decision to Race*. The Organizing Authority will not accept any liability for material damage or personal injury or death sustained in conjunction with or prior to, during, or after the regatta.

17 INSURANCE

Each participating boat shall be insured with a valid third-party liability insurance with a minimum cover of \$1,000,000 per incident, or the equivalent.

18 RIGHTS TO USE NAME AND LIKENESS

By participating in this event, competitors automatically grant to the Organizing Authority and the event sponsors the right, in perpetuity, to make, use, and show, at their discretion, any photography, audio and video recordings, and other reproductions of them made at the venue or on the water from the time of their arrival at the venue, until their final departure, without compensation.

19 FURTHER INFORMATION

Club Information: Amanda Michel wakatere@gmail.com
Event Coordinator: Gordon Sims simsgordon@gmail.com

O'pen Bics are available for charter for this event, refer to <http://openbic.org.nz/whats-on/>

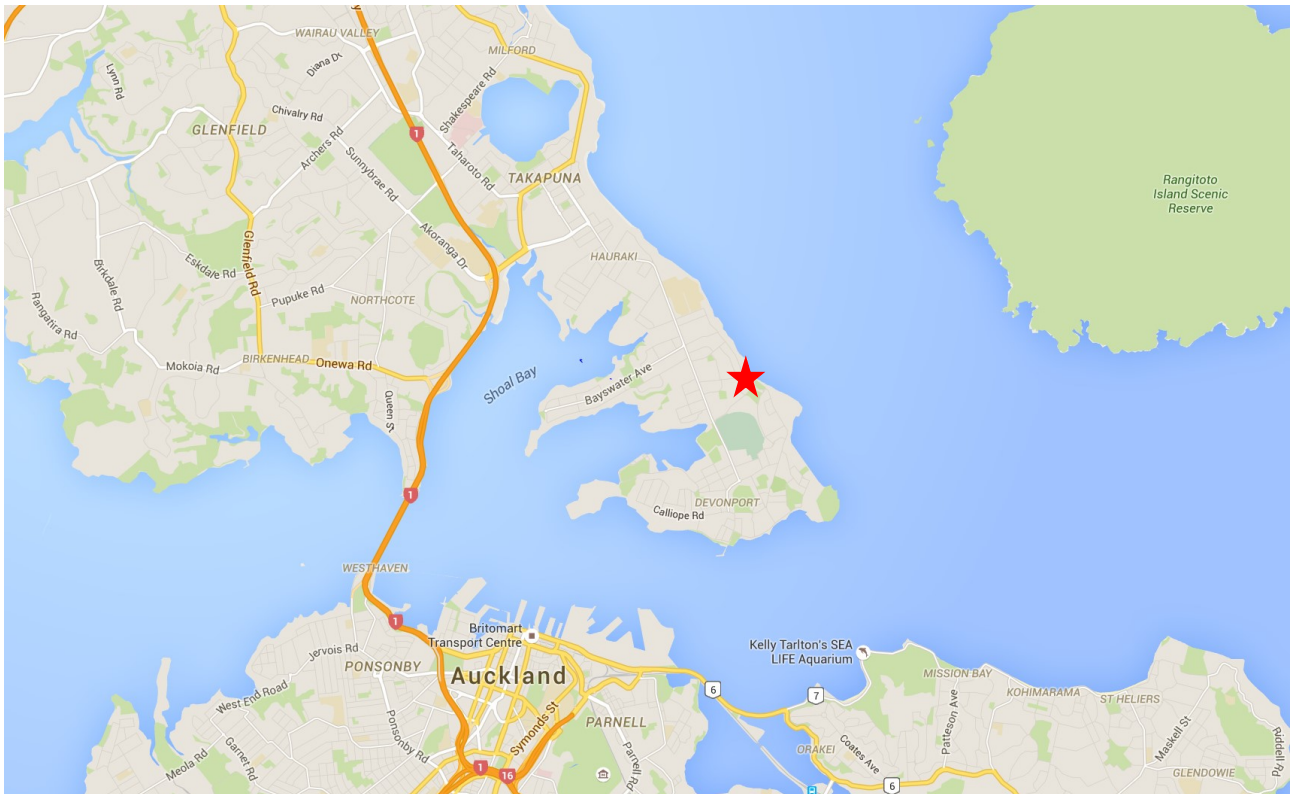
Thanks to our sponsor [NZ SAILCRAFT](#). Distributors for RS Sailing and Rooster

NZ SAILCRAFT



APPENDIX A

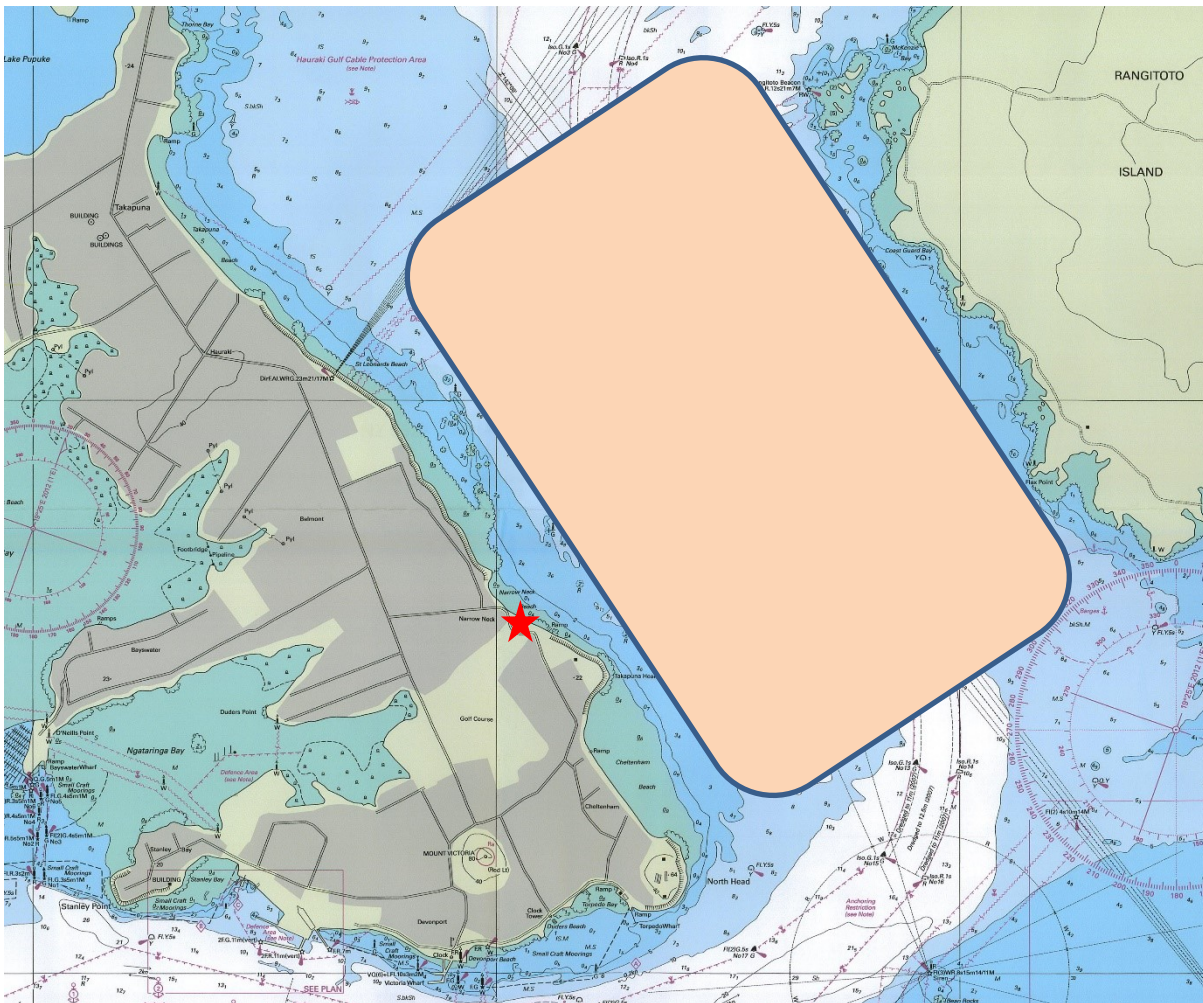
LOCATION OF WAKATERE BOATING CLUB



Wakatere Boating Club location

APPENDIX B

APPROXIMATE LOCATION OF THE RACING AREA



★ Wakatere Boating Club

Approx. Racing Area