



Yacht Bot review

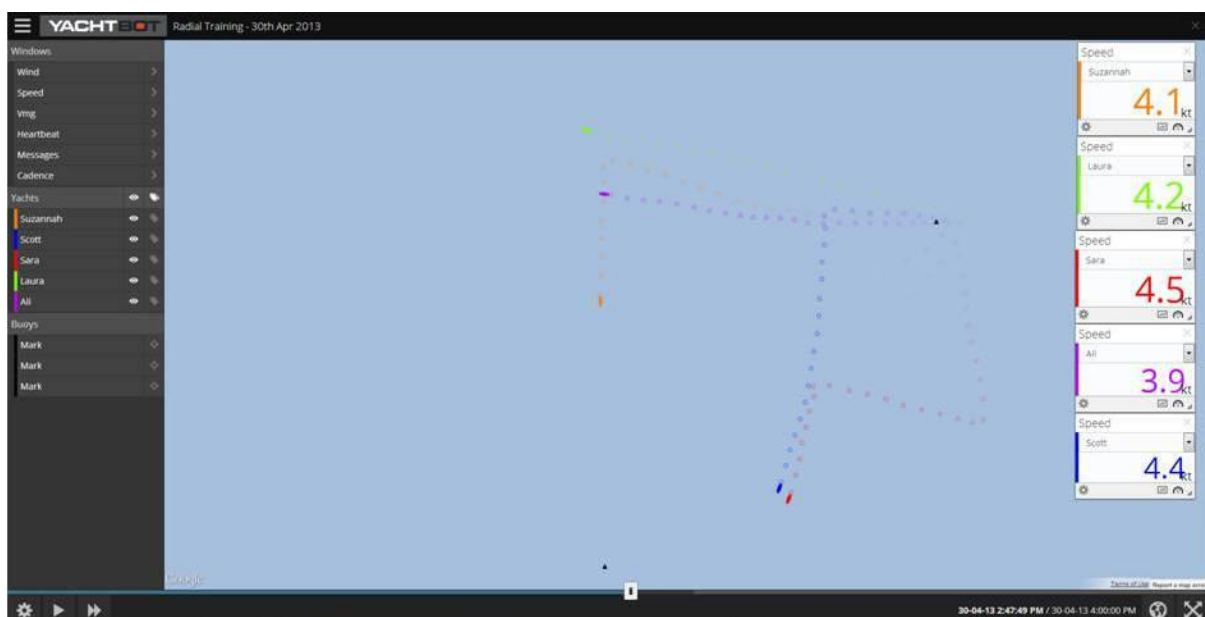
We have been using the Yacht Bot trackers for training with the NZL Radial Worlds Sailors. The trackers fit easily around the mast and also onto the buoys. Using the trackers data has proved incredibly useful at giving us detailed information for our debrief's. The focus of our training has been on lane holding and speed upwind, then angles and decision making downwind where huge distances can be gained and lost in the laser.

Analysing the data obtained from the trackers, the sailors and coach have been able to analyse each decision around the race course compared to the rest of the fleet in training. By having trackers on the marks we can zoom in and out of the race course to see position relative to the centre of the course.

The trackers give a speed reading which can be read as a live number or on a graph, which proves very useful for acceleration at starts and around marks. The boats also have a snail trail behind which shows the angles they are sailing and really shows lifts and knocks. The spacing of the dots is extremely useful for the downwind, bigger spaces between the dots shows surfing and acceleration.

More information can be found on the website;

www.igtimi.com



Clubs and sailors can get started with tracking their sailing for free using the YachtBot Mobile smart phone tracker and signing up to the basic plan on the website, just search for YachtBot on Google play or iTunes stores.

For more serious regattas and training you would use the purpose built tracker which ranges in cost from \$2300NZD for the YachtBot Bio, used for Elite training as it records Heart-rate, audio and other sensors, down to \$1400NZD for the YachtBot Standard tracker.